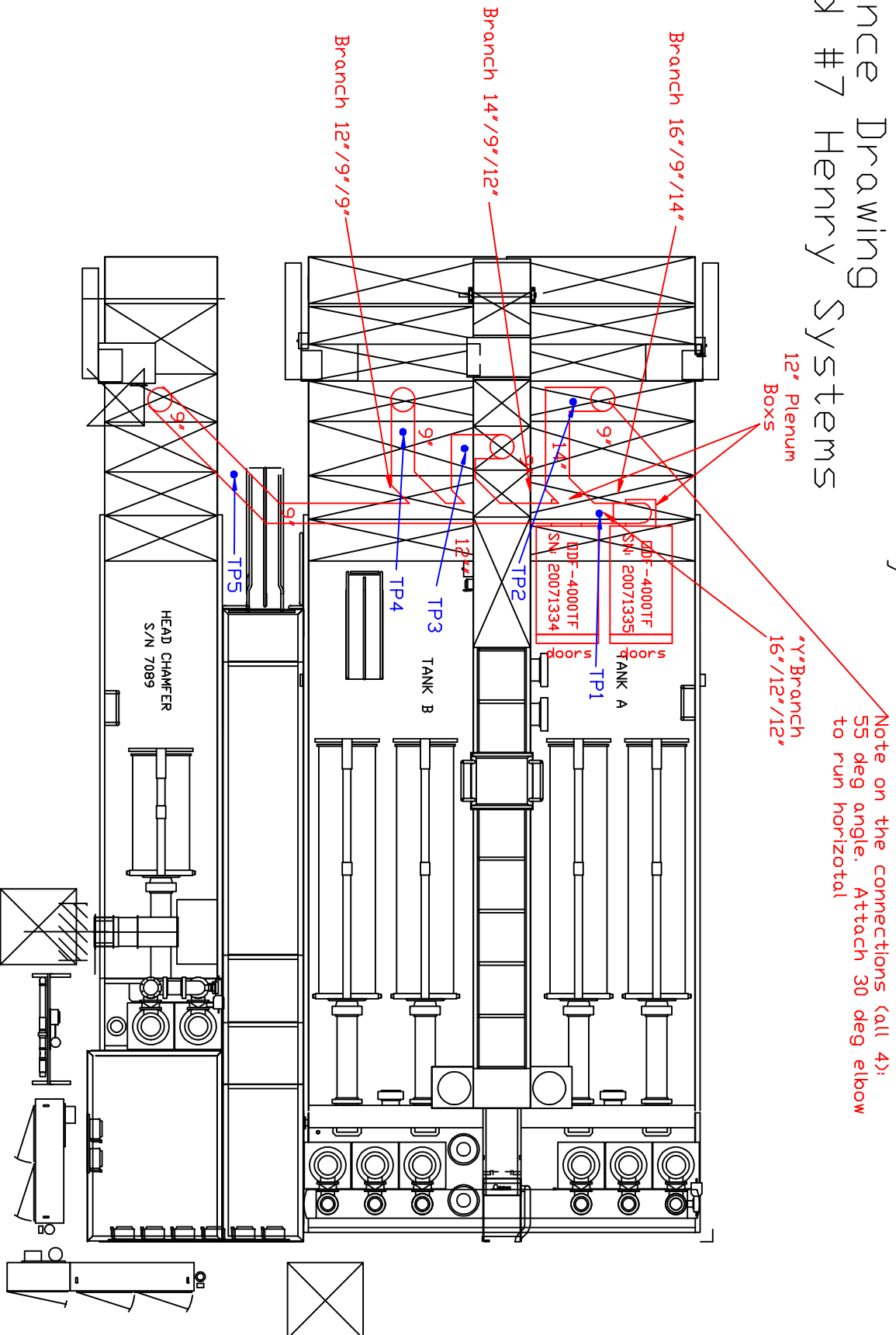


Plan View of Ductwork Layout Balance Drawing Head #7 Henry Systems



- Notes:
- A) Each drop will have a Butterfly damper for airflow adjustment.
 - B) Each drop will have a Bleed in valve to allow for balancing.
 - C) Each DDF-4000TF (2) has SHP 460volt 3Phase motor. Full load amps are 8.33amps.
 - D) Drain line: By Honda.

Industrial Air Quality
95 Cypress Drive 27596
Youngsville, NC F# 919-562-7182



Project: Honda Canada-Balance
Drawing: Head#7 Henry Systems
Date: 09/10/08 | Drawn by: WVB

Sheet No: 7 of 8 Rev.: 0