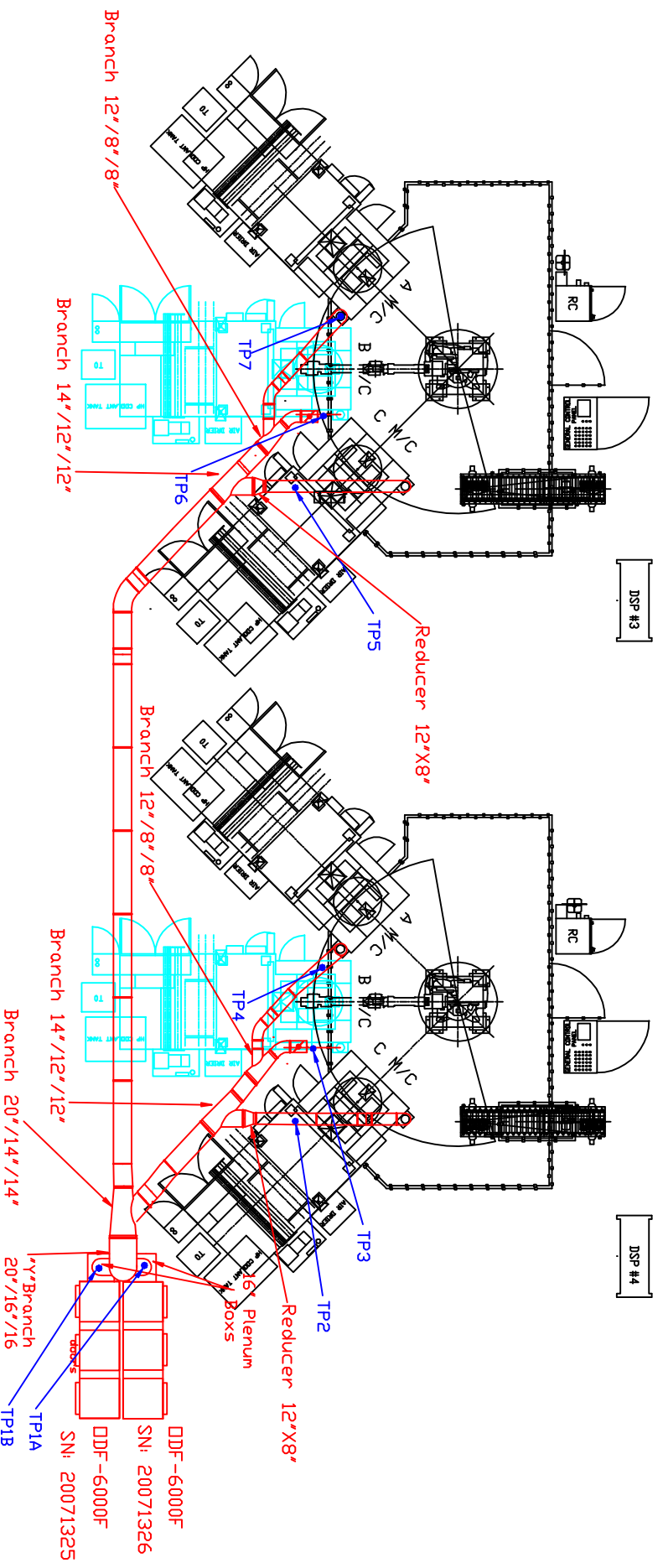


Plan View of Ductwork Layout Balance Drawing Head #2 - CNC Cells #3 & #4



- Notes:
- A) Each drop will have a Butterfly damper for air-flow adjustment.
 - B) Each drop will have a Bleed in valve to allow for balancing.
 - C) Each DDF 6000F (2) has 3 - 3.5HP 460volt 3Phase motors. Full load amps are 4.6amps each.
 - D) Drain line: By Honda.

Industrial Air Quality
 95 Cypress Drive 27596
 Youngsville, NC F# 919-562-7182
IAQ

Project: Honda, Canada - Balance
 Drawing: Head #2 CNC Cells 3&4
 Date: 09/10/08 | Drawn by: WWB
 Sheet No: 2 of 8 Rev.: 0