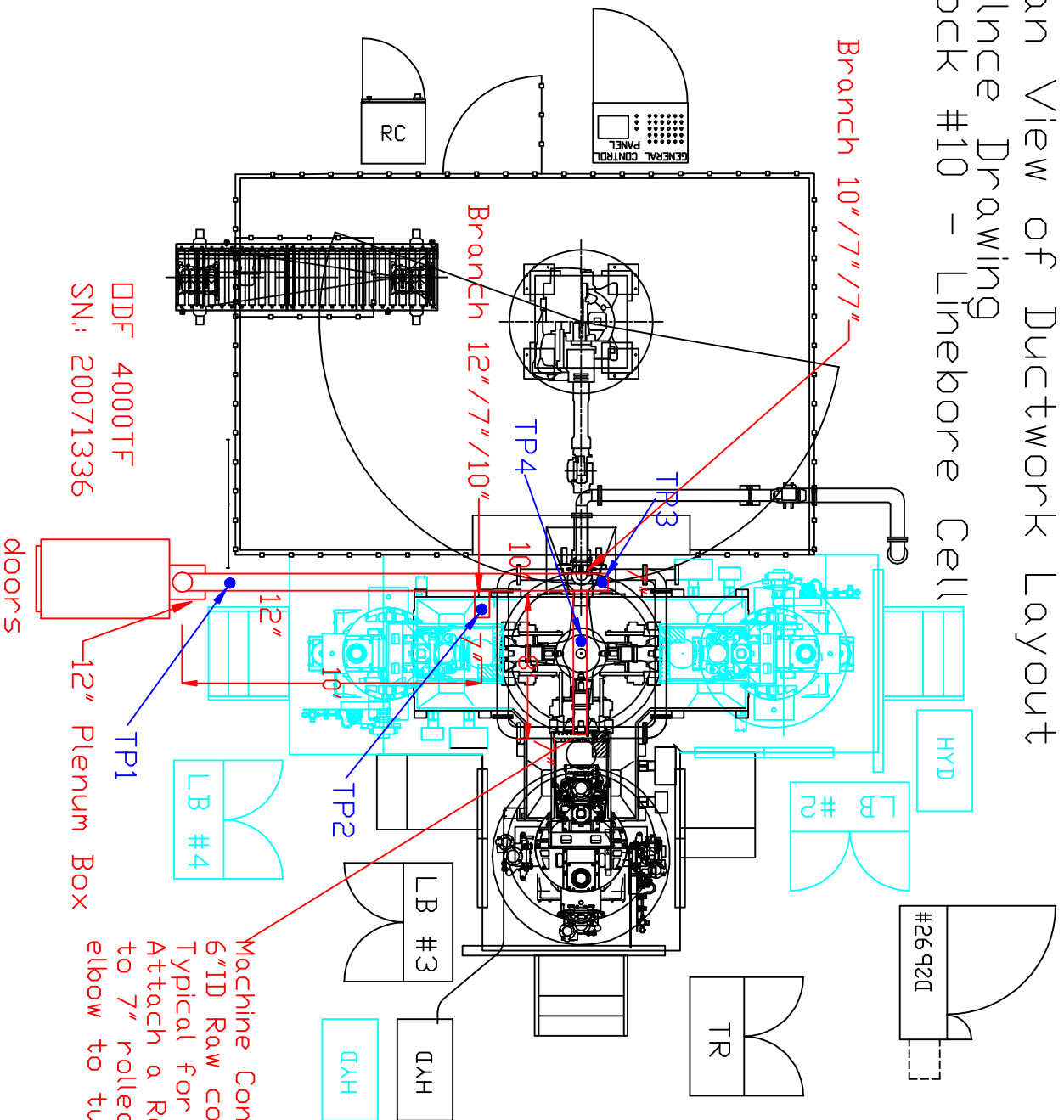


Plan View of Ductwork Layout Balance Drawing Block #10 - Linebore Cell



LINEBORE MACHINE

Machine Connection:
6" ID Raw collar / Pick up is horizontal
Typical for all 3 drops
Attach a Reducer to it (5.75" OD raw
to 7" rolled edge. Will need 7" 90 deg
elbow to turn ductwork up.

DDF 4000TF
SN: 20071336

doors

- Notes:
- A) Each drop will have a Butterfly damper for airflow adjustment.
 - B) Each drop will have a Bled in valve to allow for balancing.
 - C) DDF 4000TF has SHP 460volt 3Phase motor. Full load amps are 8.33amps.
 - D) Drain line: By Honda.

