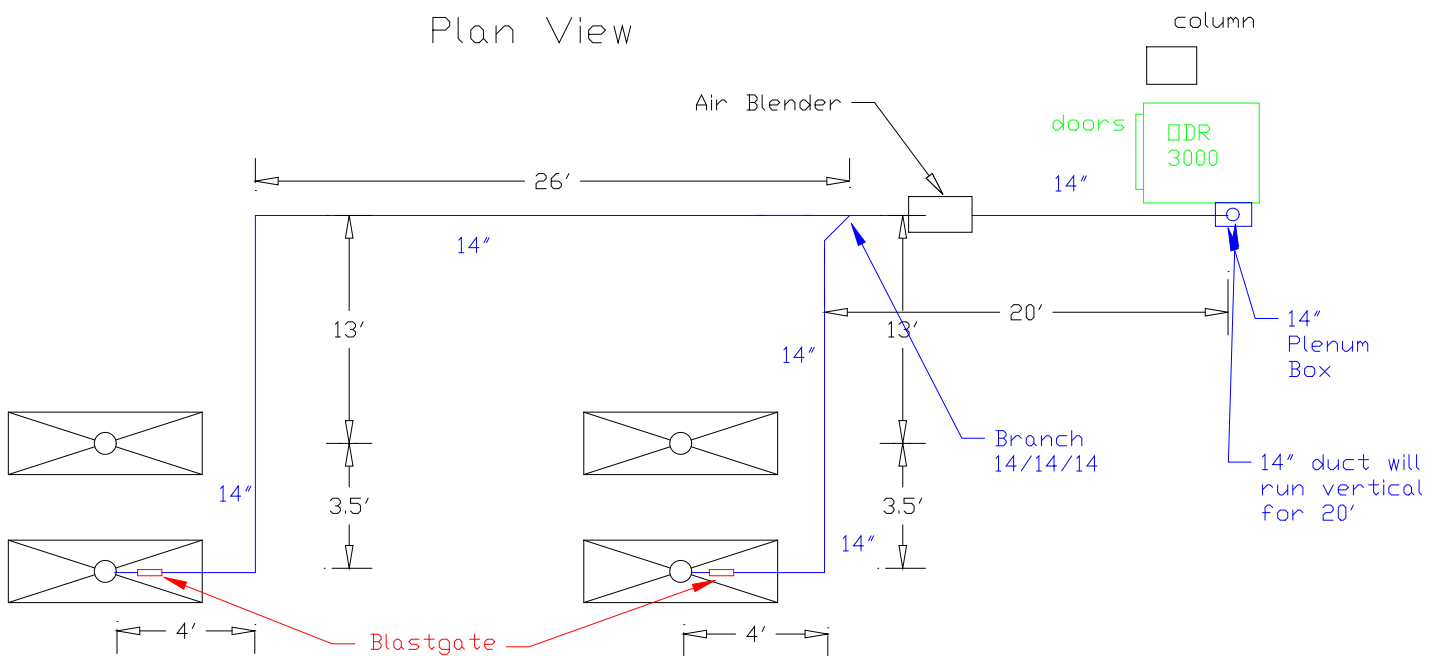


# Duct Layout for DDR 3000

## Plan View



### Notes:

- A) Ductwork will run over existing ductwork (18' to top). Bottom of ductwork will be about 20' off of floor.
- B) Use existing hoods (4). Connect to hoods with 14" angle ring adaptor.
- C) DDR 3000 will sit on 16" high stand.
- D) Drain line: Material is 3/4" Black Iron, will be a P-Trap with a ball valve for gravity drain.
- E) Electrical: 10Hp 3phase motor, at 480 volts full load amps are 14.0 amps.
- F) The motor will be wired to a junction box on the Absolent. Customer will be responsible for providing controls (starter/overload and disconnect) and wiring of the unit.

Industrial Air Quality		<b>IAQ</b>
102 AG DRIVE Youngsville, NC 27596		
P# 919-562-7181 F# 919-562-7182		
Project: Hi Temp		
Drawing: Duct Layout		
Date: 1/7/05	Drawn by: RAV	
Sheet No:		