



**Date:** August 31, 2012

**To:** Training Facility in Julian, WV

**Project:**

**Attn:**

**Recommended Equipment:**

(12) WB-1068

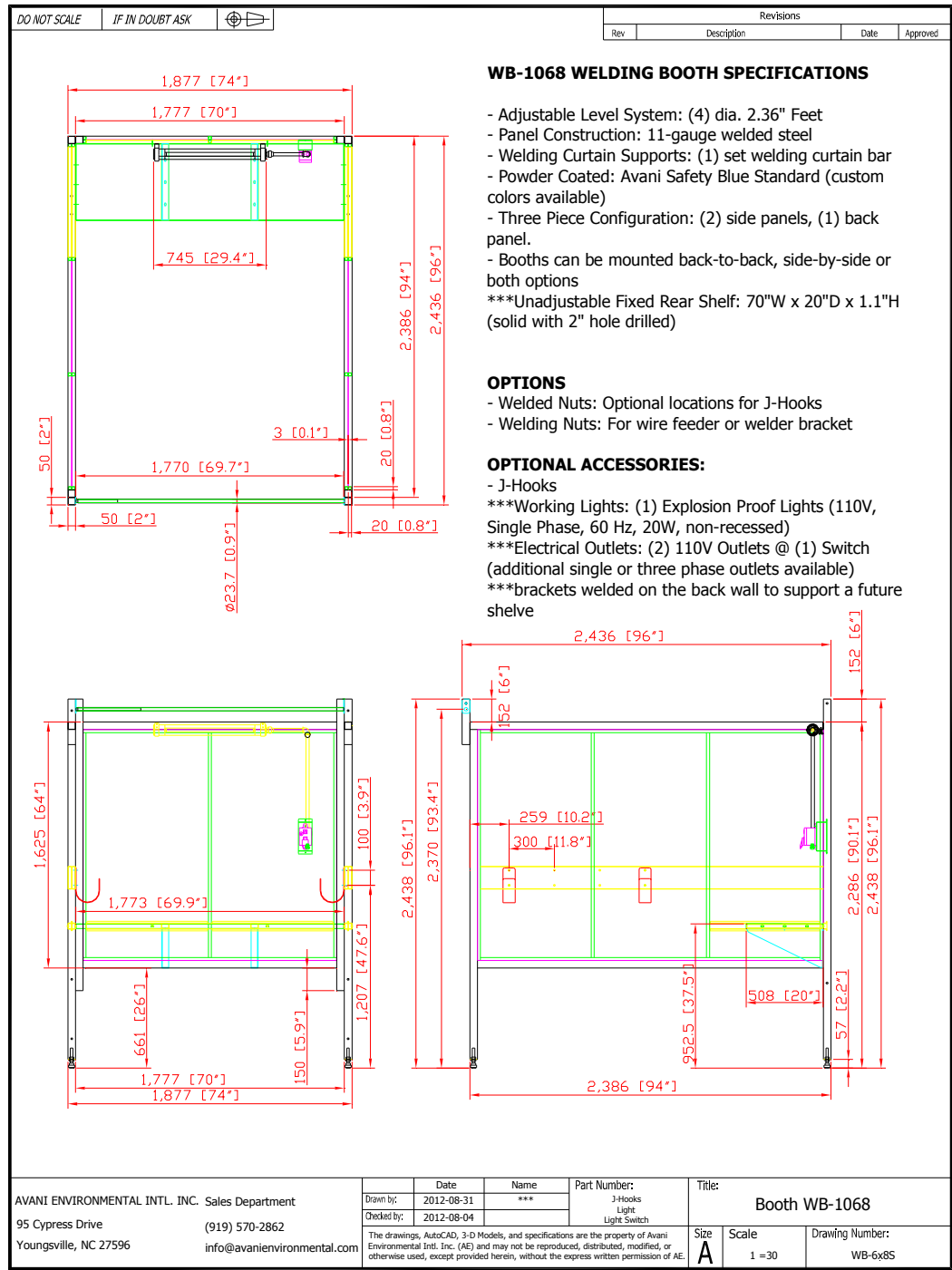
- side-by-side
- J-hooks
- working light
- light switch
- brackets welded on the back wall

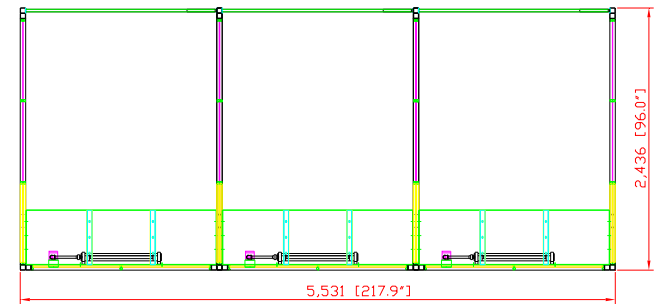
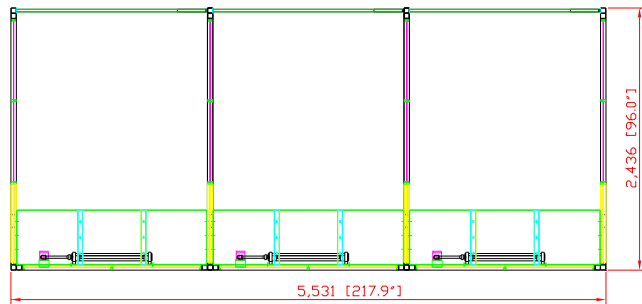
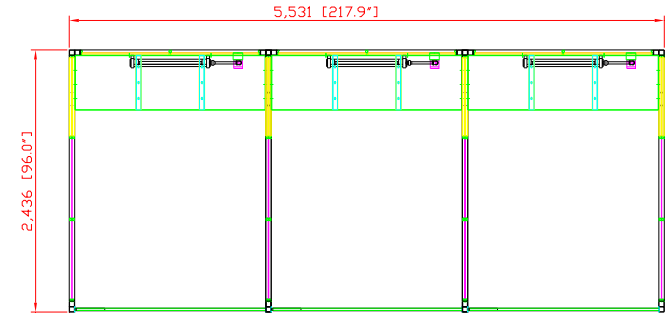
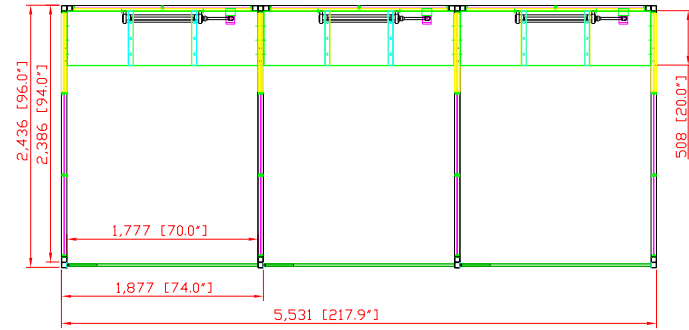
---

**Avani Environmental Intl. Inc.**  
95 Cypress Drive  
Youngsville, NC 27596  
[www.avanienvironmental.com](http://www.avanienvironmental.com)

Phone: (919) 570-2862  
Fax: (919) 570-2863  
Email: [info@avanienvironmental.com](mailto:info@avanienvironmental.com)  
[www.weldingbooths.com](http://www.weldingbooths.com)

The drawings, AutoCAD, 3-D Models, and specifications are the property of Avani Environmental Intl. Inc. (AE) and may not be reproduced, distributed, modified, or otherwise used, except provided herein, without the express written permission of AE.







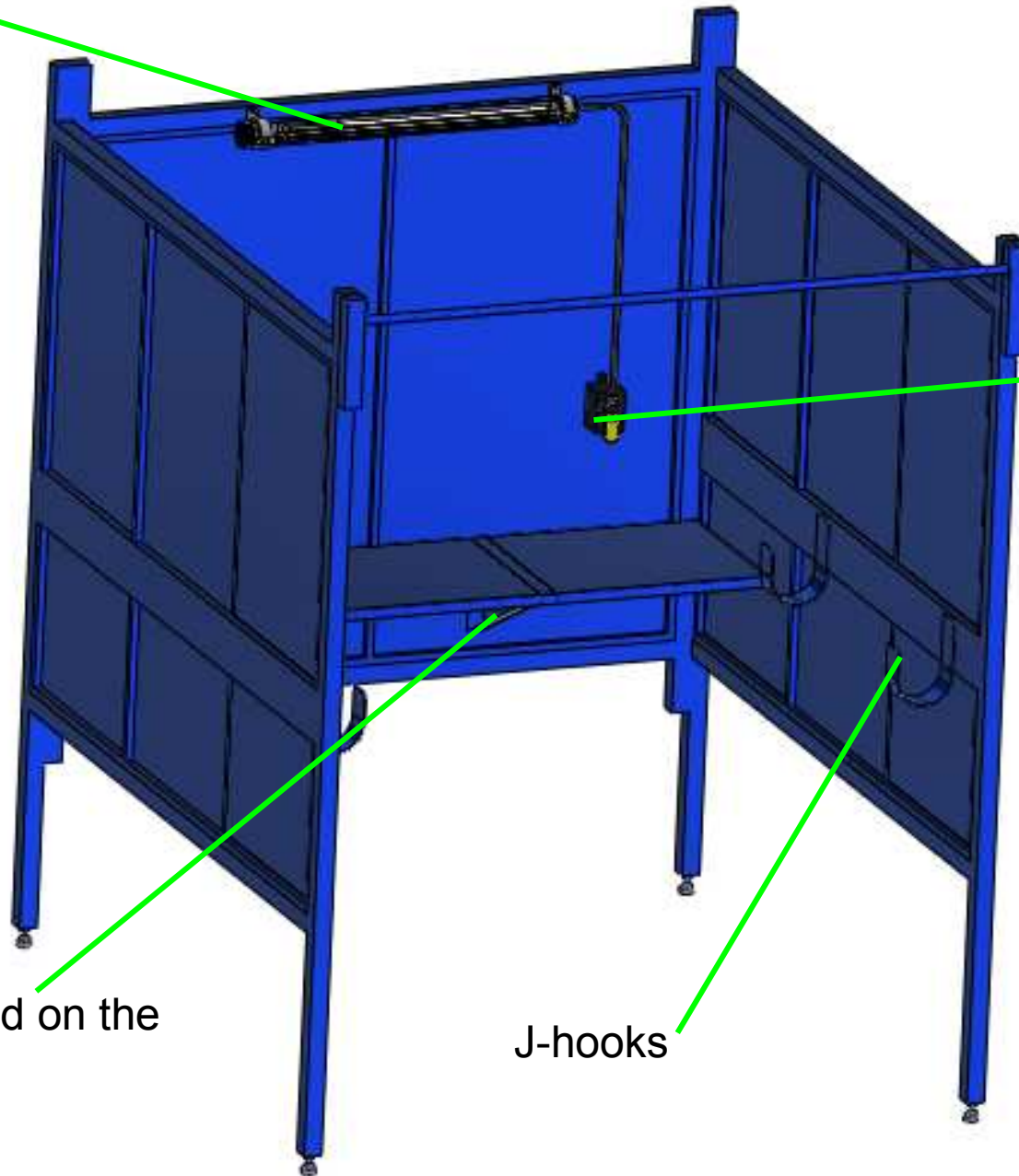
curtain sourced locally

working light

light switch

brackets welded on the  
back wall

J-hooks



(3) WB-1068 (side-by-side), total (12) WB-1068

