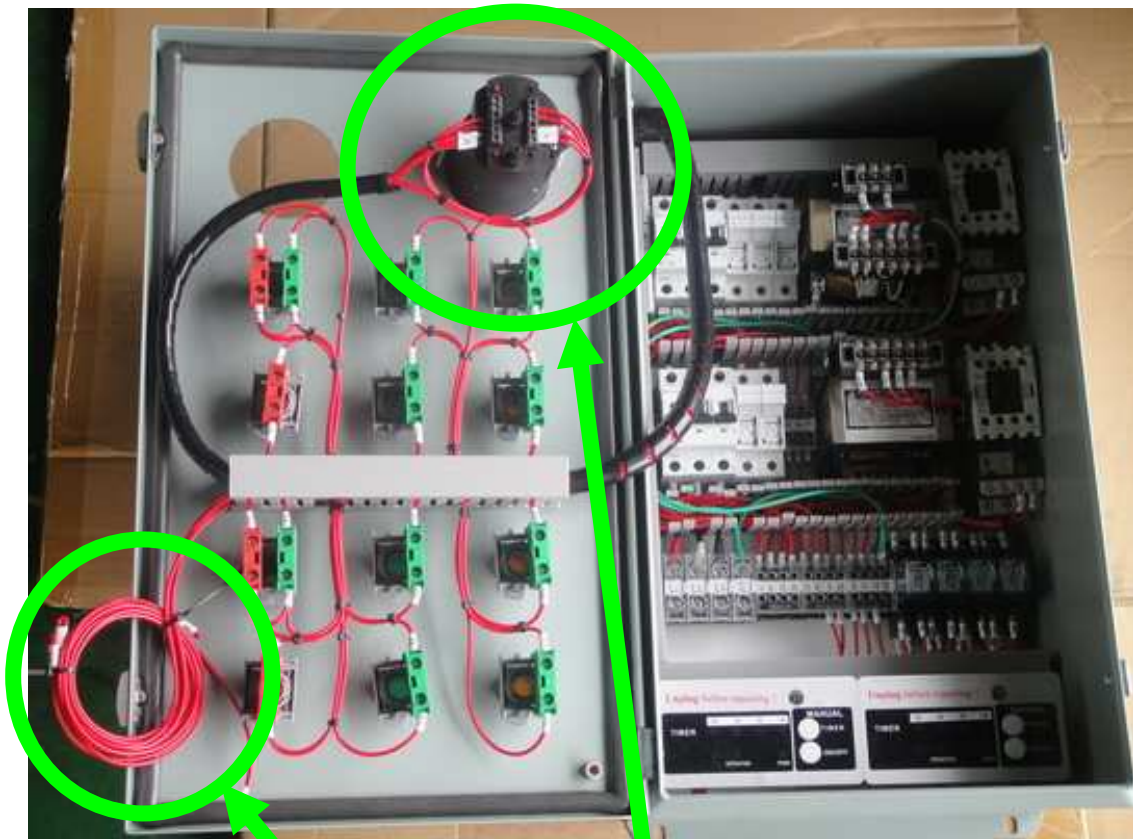




1. Holes on the control panels are pre-drilled before shipment.



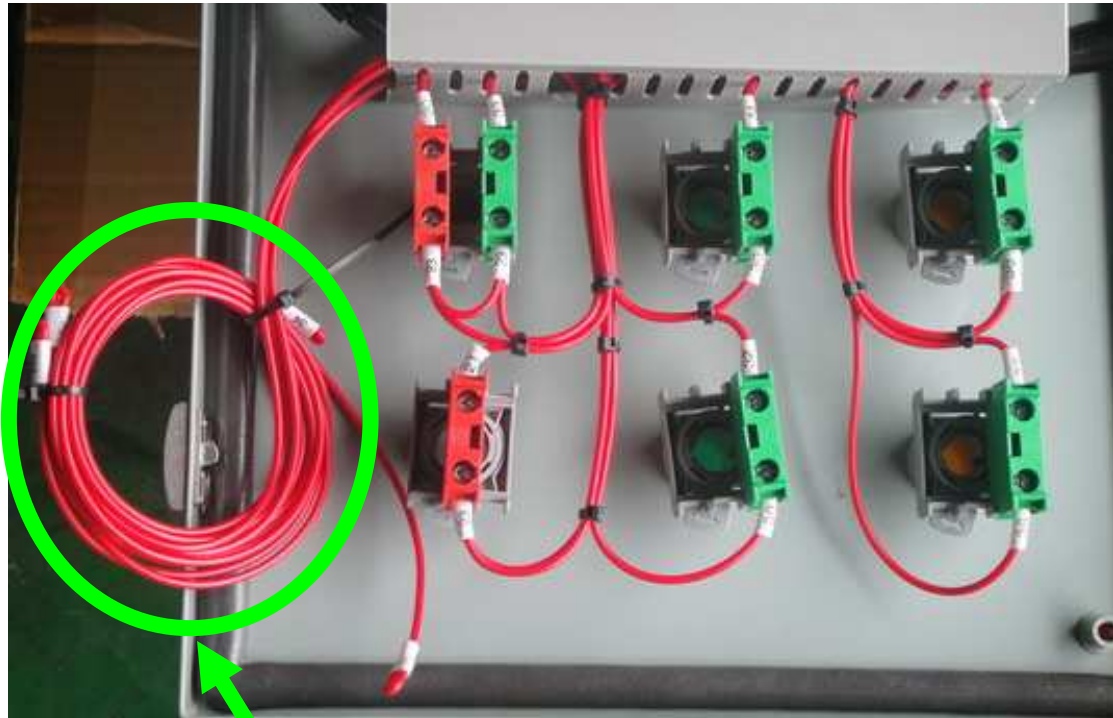
2. Please source photohelic gauges locally. The gauge shown on the photo is just for demonstration only.



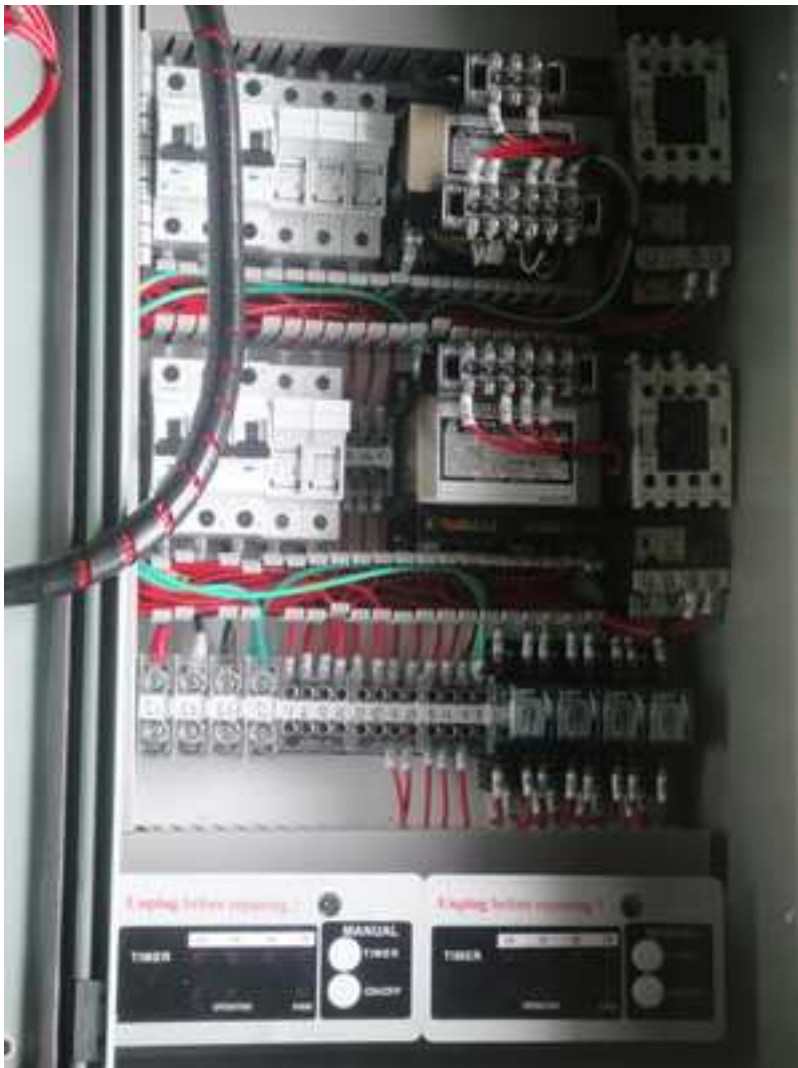
3. preserved for field wirings and the gauge contact connections at the back



4. gauge connections close-up.



5. Preserved wirings for you to connect locally as to function gauges.



6. whole view of the shared control panel.