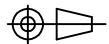


DO NOT SCALE

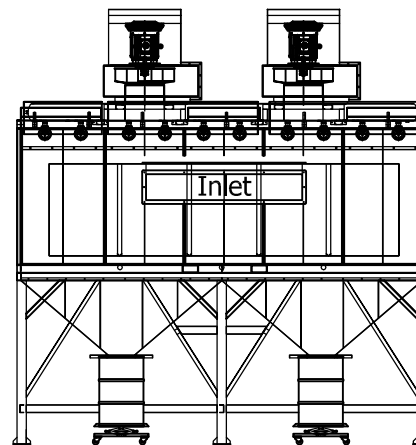
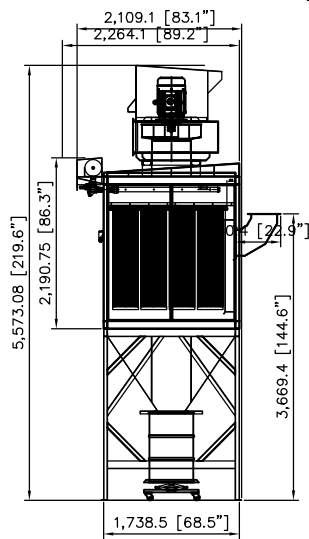
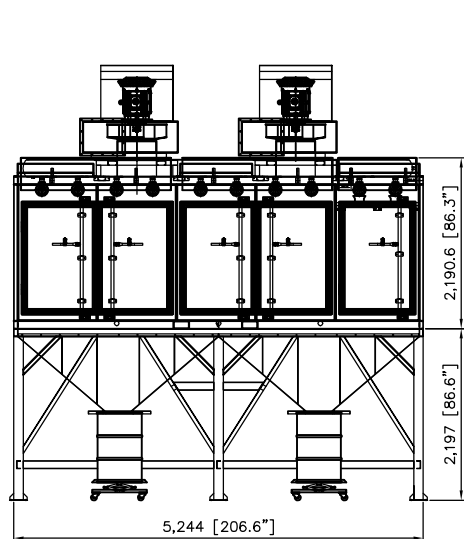
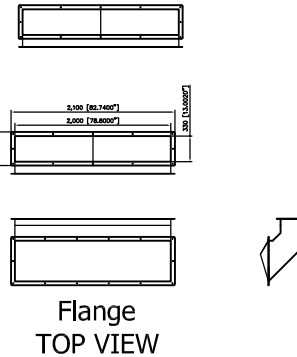
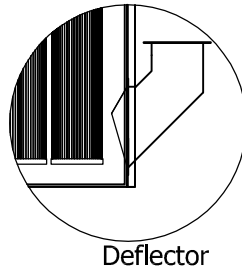
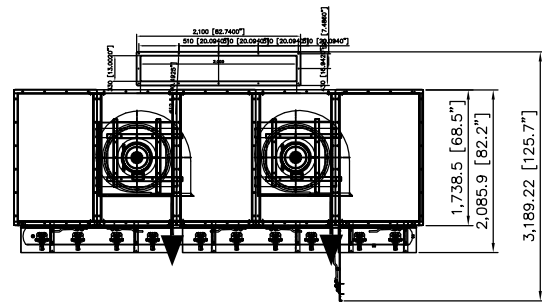
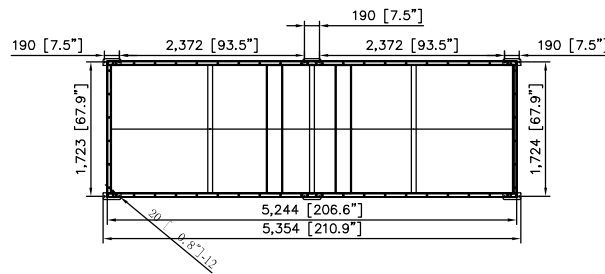
IF IN DOUBT ASK



Revisions			
Rev	Description	Date	Approved

- SDC-25x2-40 SPECIFICATION -

- Direct Drive Blower (on the machine)
- Motor: 25HP x 2 pcs (480V / 60Hz / 3Ph)
- CFM: 20,000 ft<sup>3</sup>/min @ 8" SP
- Include:
  - UL Individual Control Boxes for Cartridge Collector and Blowers
- Inlet: 2000 x 330 mm (78.8" x 13")
- Cartridge Filter: Dia. 325mm x 1320mm x 40pcs (Dia. 12.8" x 52" x 40pcs)
- Material: Polyester with TEFLON coating.
- Filter Area: 19m<sup>2</sup> x 40 = 760m<sup>2</sup> (8177.6 ft<sup>2</sup>)
- Pleat Depth: 48mm
- Horizontal Positioned Filters,
- Continuous Welded Seams,
- Gasket and Latched Doors,
- Powder Coated Paint and
- Reverse Jet Pulse Cleaning
- Include:
  - Drum & Jack Lifting Tool
  - Filter Chamber
  - Hopper
  - Inlet Square Pipe (need dimensions)
  - Double fan/motor combinations
- No. of Valves: 10
- Inlet Air:  $\frac{3}{4}$ "
- Compressed Air Requirement: 90 PSI
- Compressed Air Reservoir: 39.5 gallon
- Dimension: 206.6" x 68.5" x 219.6" (5244 x 1738.5 x 5573.08mm)
- Construction: 13 Gauge for panel; 11 Gauge Steel Cabinet
- Max. Operating Temp.: 120°C
- \*\*\*Custom Paint Color: Dark Bronze - incl. exterior ductwork (customer to supply a metal paint sample to match).



AVANI ENVIRONMENTAL INTL. INC. Sales Department  
 95 Cypress Drive  
 Youngsville, NC 27596

(919) 570-2862  
 info@avanienvironmental.com

Drawn by:	Date	Name	Part Number:	Title:
Checked by:	2011-05-16	***	SDC-25x2-40	Large Cartridge Collector
The drawings, AutoCAD, 3-D Models, and specifications are the property of Avani Environmental Intl. Inc. (AE) and may not be reproduced, distributed, modified, or otherwise used, except provided herein, without the express written permission of AE.			Size	Scale
			A	1 = 1
			Drawing Number:	
			SV-5000-0225-02	