

PARTIAL FIRST FLOOR PLAN
SCALE: 1/4" = 1'-0"

KEYNOTES

- 15.205 PROVIDE GAS PIPING AS SHOWN TO TOP OF PREFABRICATED WELDING BOOTHS. ROUTE BRANCH PIPE ALONG TOP OF BOOTHS AND CONNECT TO EACH BOOTH FINE-CUT OFF. ALL BRANCH PIPES SHALL BE 1/2" DISCONNECT AIR FITTING 48 INCHES ABOVE FINISHED FLOOR.
- 15.206 DISCONNECT AIR FITTING 48 INCHES ABOVE FINISHED FLOOR.
- 15.208 PROVIDE COMPRESSED AIR PIPE TO NEW FUME COLLECTORS AND PROVIDE FINAL CONNECTION.
- 15.209 PROVIDE PIPING DOWN UNITS/ SUPPORT SYSTEM AND ALONG UNITS/ TO EACH GAS OUTLET LOCATION. PROVIDE GAS SHUT-OFF VALVE AT OUTLET LOCATION. COORDINATE EXACT LOCATION WITH OWNER. REFER TO ATTACHED 'A' PROVIDE NEW GAS SERVICE PIPE FROM ROOM SHOWN AND ROUTE TO BOOTHS. PROVIDE FINAL CONNECTION TO BOOTHS.
- 15.211 GAS OUTLET LOCATIONS AND GAS PIPE REQUIRED (TYPICAL).

ROOM SCHEDULE

RM. NO.	ROOM NAME	RM. NO.	ROOM NAME
100	LOADING DOCK		
101	VESTIBULE		
102	FLAMMABLE GAS STORAGE		
106	COMPRESSED GAS STORAGE		
108	LOCKERS		
110	WELDING LAB		
112	LOADING DOCK		
116	ARC/AIR GOULDER ROOM		
118	OFFICE		
120	CLASSROOM		
141	HALLWAY		
141	SECURED STORAGE		

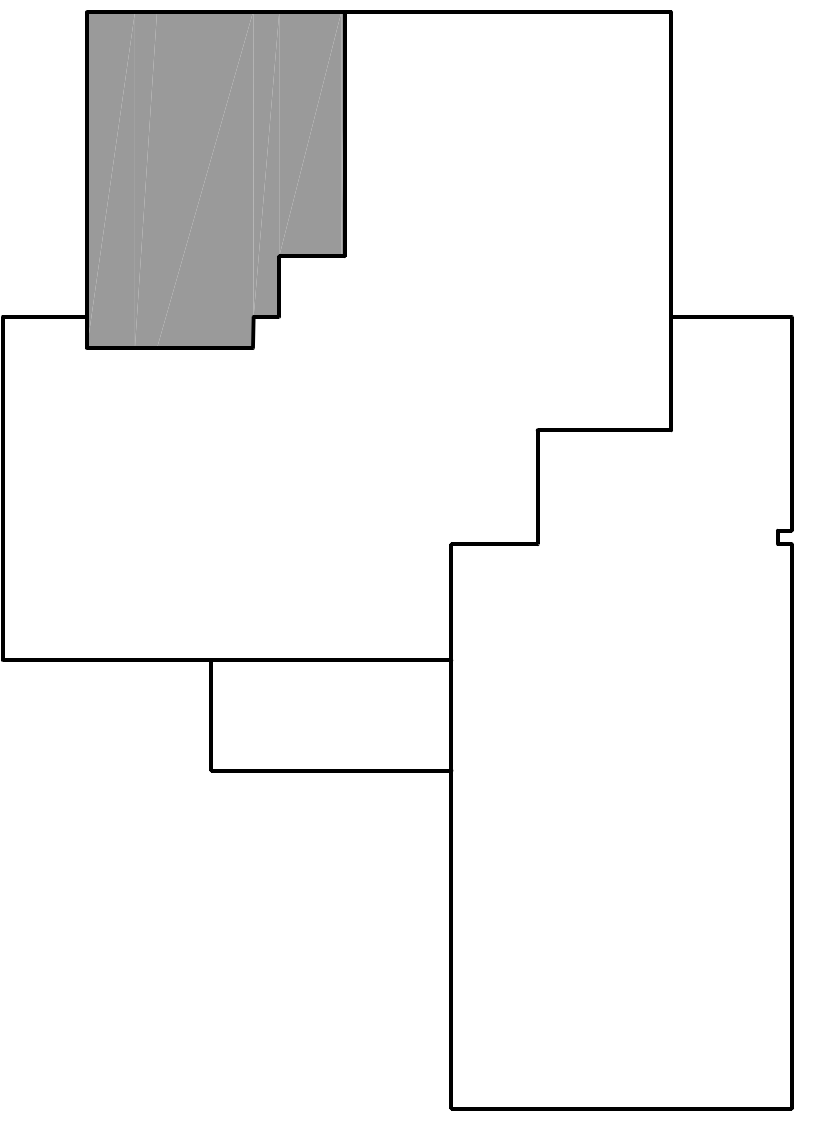
GENERAL NOTES

1. REFER TO DRAWING CSD0 FOR REMOVE DESCRIPTIONS NOT APPEARING ON THIS DRAWING.
2. REFER TO DRAWING CSD0 FOR PROJECT GENERAL NOTES.
3. ALL PIPING IS SHOWN DISASSEMBLY AND DOES NOT SHOW ALL OFFSETS, DRIPS AND BRES. THE CONTRACTOR IS RESPONSIBLE TO PROVIDE ALL MATERIAL AND LABOR FOR A COMPLETE AND WORKING SYSTEM OBTAIN AND PAY ALL COSTS FOR PERMITS, LICENSES, CERTIFICATE FILING AND INSPECTIONS BY AUTHORITIES HAVING JURISDICTION.
4. EXISTING PIPING INDICATED ON THESE PLANS SHALL BE FIELD VERIFIED FOR EXACT LOCATION, QUANTITY AND PIPE SIZES.
5. COORDINATE LOCATIONS OF ROUGH-INS FOR BOOTHS WITH MANUFACTURER'S SHOP DRAWINGS/ DRAWINGS.

EXISTING FIRE RATING SCHEDULE

- EXISTING 4 HOUR FIRE RATED WALL ASSEMBLY. MAINTAIN FIRE RATING.
- EXISTING 1 HOUR FIRE RATED WALL ASSEMBLY. MAINTAIN FIRE RATING.

KEY PLAN



ISSUED

BID DOCUMENTS	DATE
	04/04/11

JOB NO. 11-188-686
 DRAWN DDW
 CHECKED DDW
 APPROVED JJK

SHEET TITLE: FIRST FLOOR PIPING PLAN
 SHEET NUMBER: P300

ELGIN COMMUNITY COLLEGE: ITR WELDING LAB RENOVATIONS

ELGIN COMMUNITY COLLEGE
1700 SPARTAN DRIVE
ELGIN, ILLINOIS 60123

Kluber, Inc.
901 N. Batavia Ave., Suite 301
Batavia, Illinois 60510
tel. 630.406.1213
fax 630.406.9472
www.kluberinc.com

