

**KEYNOTES**

**KLUBER**  
Architects + Engineers

Kluber, Inc.  
901 N. Batavia Ave., Suite 301  
Batavia, Illinois 60510  
tel. 630.406.1213  
fax 630.406.9472  
www.klubercinc.com

**ROOM SCHEDULE**

RM. NO.	ROOM NAME	RM. NO.	ROOM NAME
100	LOADING DOCK		
101	VESTIBULE		
102	FLAMMABLE GAS STORAGE		
106	COMPRESSED GAS STORAGE		
108	LOCKERS		
110	WELDING LAB		
112	LOADING DOCK		
114	ARC/AIR GOSSING ROOM		
118	OFFICE		
120	CLASSROOM		
122	HALLWAY		
141	SECURED STORAGE		

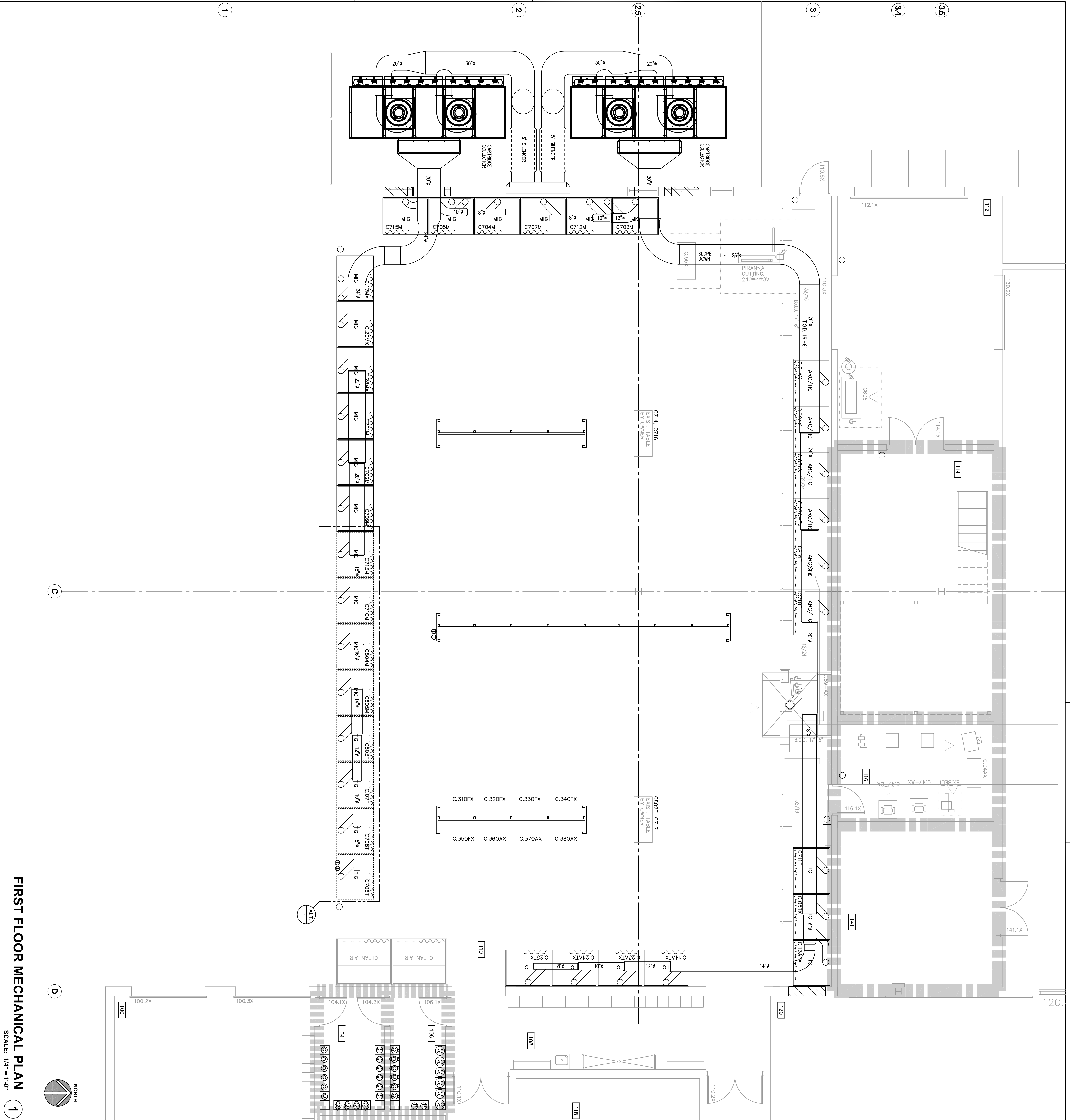
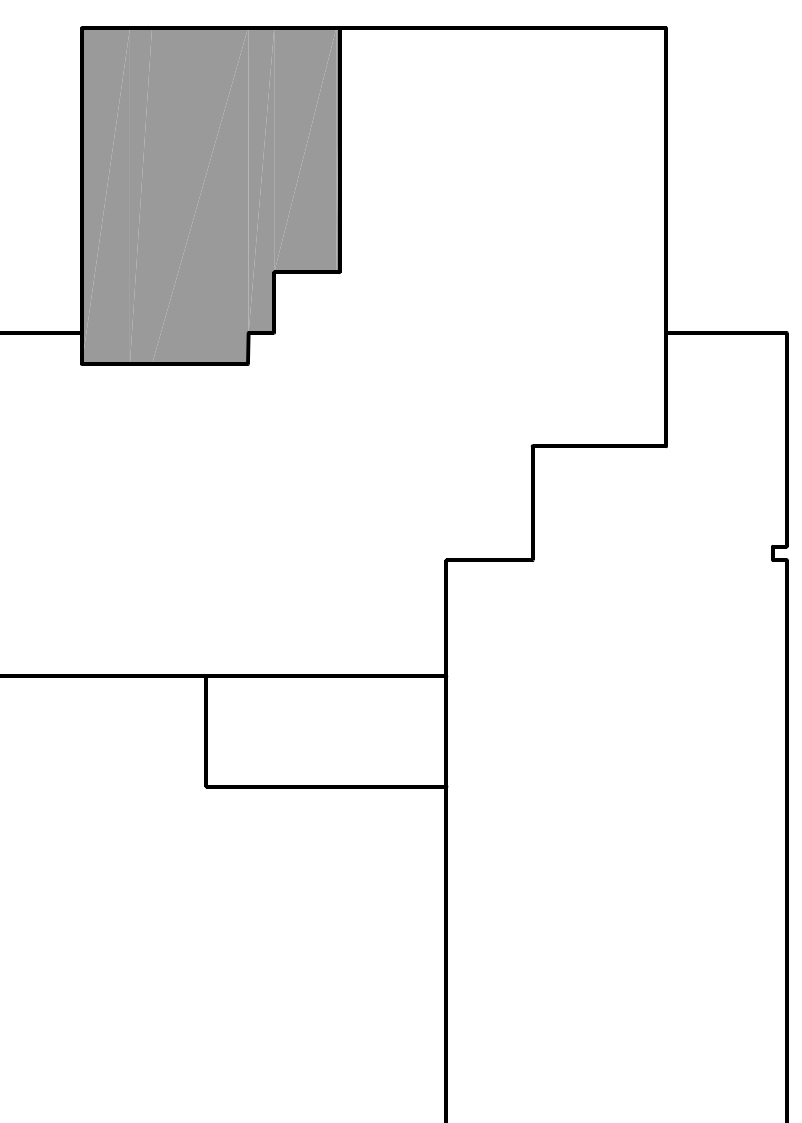
**GENERAL NOTES**

1. REFER TO DRAWING C100 FOR PROJECT GENERAL NOTES.
2. REFER TO DRAWING C200 FOR KEYNOTE DESCRIPTIONS NOT APPEARING ON THIS DRAWING.
3. ALL PIPING AND DUCTWORK IS SHOWN DISASSEMBLABLE AND DOES NOT SHOW ALL OFFSETS, DROPS AND RISERS. THE CONTRACTOR IS RESPONSIBLE TO PROVIDE ALL MATERIAL AND LABOR FOR A COMPLETE AND WORKING SYSTEM.

**EXISTING FIRE RATING SCHEDULE**

- ▬ EXISTING 4 HOUR FIRE RATED WALL ASSEMBLY, MAINTAIN FIRE RATING.
- ▬ EXISTING 1 HOUR FIRE RATED WALL ASSEMBLY, MAINTAIN FIRE RATING.

**KEY PLAN**



**FIRST FLOOR MECHANICAL PLAN**  
SCALE: 1/4" = 1'-0"

**M300**

FIRST FLOOR MECHANICAL PLAN

SHEET NUMBER

ISSUED	
BID DOCUMENTS	DATE
	04/04/11
JOB NO. 11-188-686	
DRAWN DDW	CHECKED DDW
APPROVED JJK	

**ELGIN COMMUNITY COLLEGE: ITR WELDING LAB RENOVATIONS**

ELGIN COMMUNITY COLLEGE  
1700 SPARTAN DRIVE  
ELGIN, ILLINOIS 60123