

**KEYNOTES**

- 3100 5'-1 1/2" THICK REINFORCED CONCRETE SLAB WITH 60KSI 8 W/P. ON WORK BARRIER.
- 3300 6" MIN THICK REINFORCED EXISTING CONCRETE SLAB WITH #3 REBAR @ 16" O.C. EACH WAY ON EXISTING FLOOR TO TOP OF CONCRETE. PROVIDE 1/4" PER FOOT PITCH AWAY FROM BUILDING.
- 4100 CLAY UNIT MASONRY. RUNNING BOND. PATCH ADVANCED MECHANICAL OPENING WITH BRICK TO MATCH EXISTING. TOOTHING IS NOT REQUIRED. BRICKS ROD AND GASKET PERimeter OF OPENING WEATHER TIGHT. SET TO MATCH EXISTING. TOOTHING IS NOT REQUIRED. GASKET PERimeter OF OPENING WEATHER TIGHT. PROVIDE NEW MASONRY CAVITY WALL CONSTRUCTION AT LOCATION OF NEW MECHANICAL LOUVER. OPENING TO BE 36" X 36" WITH TOP OF OPENING TO BE +1'-10" AFF. COORDINATE EXACT LOCATION AND HEIGHT WITH WELDING BOOTH SUPPLIER AND SHEET METAL CONTRACTOR. TYPICAL AT 2 OPENINGS.
- 5100 4" HIGH UNITS BASE COVER. REFER TO ALTERNATE BID #2. TYPICAL THROUGHOUT ROOM.
- 8200 4" WIDE BRIGHT YELLOW PAINT STRIP ON FLOOR SLAB. TOP BASE BID.
- 9200 FULLY SPRAYED CONCRETE FLOOR SLAB AND INSTALL PRIME AND TWO COATS EPOXY FLOOR PAINT. REFER TO ALTERNATE BID #2. TYPICAL THROUGHOUT ROOM.
- 10000 EXISTING REINFORCED CONCRETE THROUGH MASONRY WALL CONSTRUCTION TO BE REUSED SHEET METAL FLANGED DUCTWORK CONNECTIONS FOR DUST COLLECTOR WITH NEW FINE ENVELOPES AND WALL BRACKET.
- 10100 WALL MOUNTED FIRE BLANKET - REUSED.
- 11020 EXISTING LAB EQUIPMENT TO BE RELOCATED TO NEW LOCATION BY OWNER. FINAL EQUIPMENT CONNECTIONS TO BE DETERMINED BY USER.
- 11030 EXISTING LAB EQUIPMENT TO REMAIN.
- 11040 EXISTING CLEAN AIR WELDING BOOTH TO REMAIN.
- 11070 PREMANUFACTURED WELDING BOOTH. REFER TO SPECIFICATIONS.
- 11080 THE REBARBED WELDING BOOTH. REFER TO SPECIFICATIONS.
- 11090 ANCHOR BOLT DUST COLLECTOR TO CONCRETE SLAB AS RECOMMENDED BY EQUIPMENT MANUFACTURER. PROVIDE NEW GALVANIZED DUCTWORK AND GALVANIZED DUCTWORK SUPPORT AS REQUIRED. PRIME AND TWO COATS PAINT ON NEW DUCTWORK AND SUPPORT POSTS. TYPICAL.
- 11140 UNSTUTTED DOUBLE STEEL CHANNEL FRAMING. 12 GAUGE. PITCH WITH 1-5/8" UNSTUTTED HORIZONTAL RAILS SPACED 4'-0" O.C. EXPOSE HEIGHT OF RACK TO CEILING STRUCTURE ABOVE. TYPICAL AT BAYS OF RACKING. SCORER'S FASTEN WITH CONCRETE AND OVERFIELD UNSTUTTED FRAMING ATTACHED TO BOTTOM CHORD OF METAL BAYS. PROVIDE HOLE PATTERN AS REQUIRED TO ALLOW FOR MOUNTING OF COMPONENTS. VERIFY DESIGN REQUIREMENTS TO UNWITTED BRACKETING. REUSE OF EXISTING DEMOLISHED UNSTUTTED IS ALLOWED. SUPPLEMENT WITH NEW UNSTUTTED AS NECESSARY TO CONSTRUCT NEW RACKWAY AND UTILITY SUPPORTS. FIELD PAINT SUPPORTS AND PRIME WITH AFTER NEW INSTALLATION.
- 11170 FIELD PAINT SUPPORTS AND PRIME WITH AFTER NEW INSTALLATION. UNSTUTTED HANGERS. TOP RAIL MOUNTED AT 5'-0" AFF. BOTTOM RAIL MOUNTED 1'-0" AFF. TYPICAL. EXPOSE LENGTH OF UNSTUTTED RACK. 1-5/8" UNSTUTTED VERTICAL POSTS AT 4'-0" O.C. X 5'-0" HIGH FASTENED TO CONCRETE FLOOR SLAB WITH ANCHOR BOLTS SECURELY FASTENED TO HORIZONTAL RAILS. FIELD PAINT SUPPORTS AND PRIME WHITE AFTER NEW INSTALLATION.

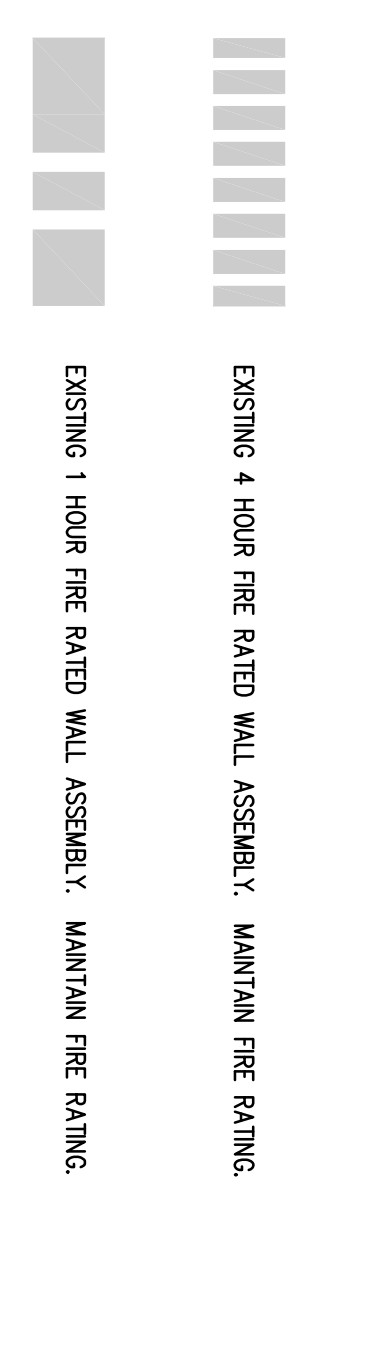
**ROOM SCHEDULE**

RM. NO.	ROOM NAME	RM. NO.	ROOM NAME
100	LOADING DOCK		
101	VESTIBULE		
102	FLAMMABLE GAS STORAGE		
103	FLAMMABLE GAS STORAGE		
104	COMPRESSED GAS STORAGE		
105	LOCKERS		
108	LOCKERS		
112	LOADING DOCK		
114	ASC./AIR GOSSING ROOM		
116	OFFICE		
118	CLASSROOM		
120	HALLWAY		
141	SECURED STORAGE		

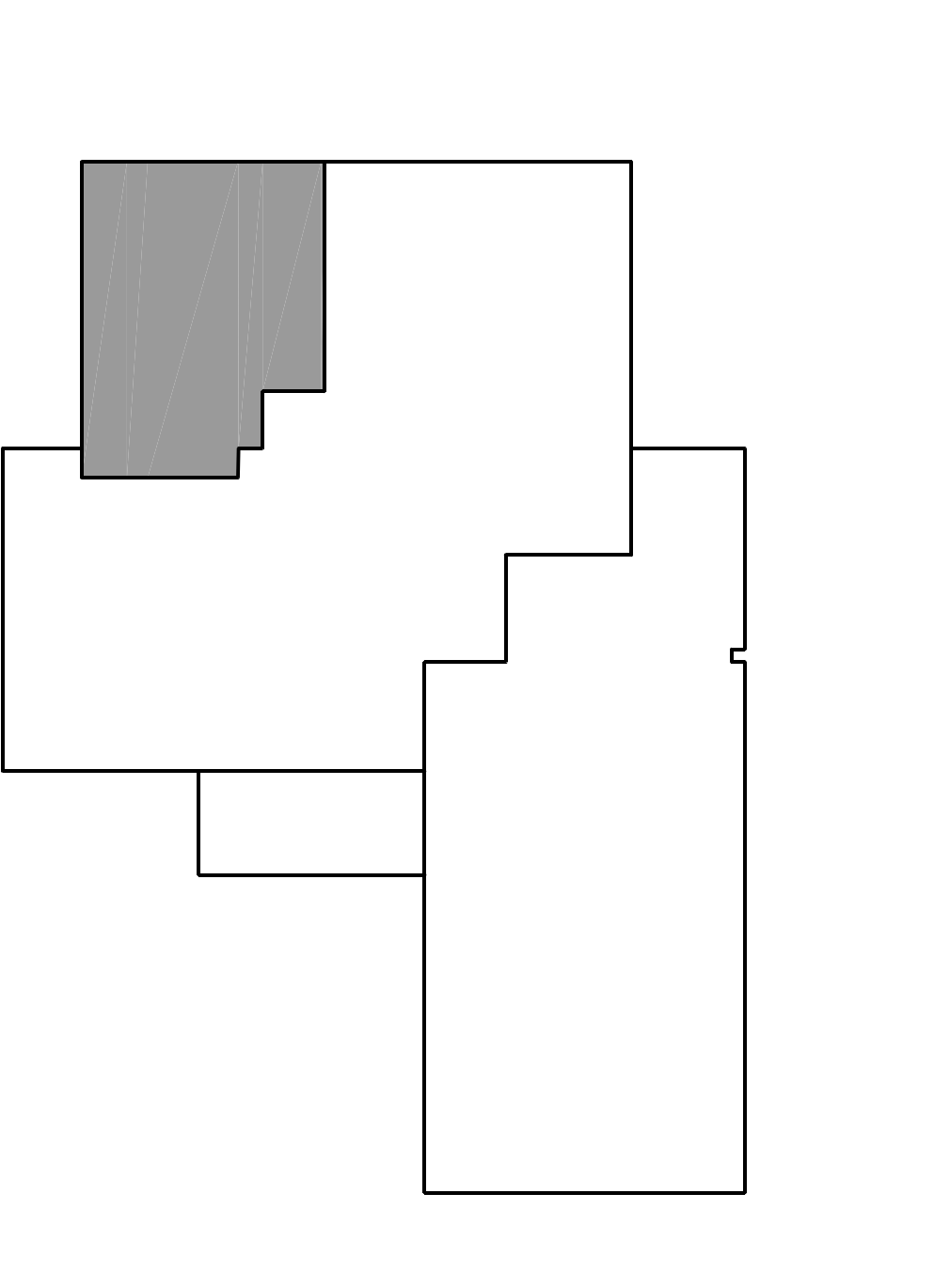
**GENERAL NOTES**

1. REFER TO DRAWING C100 FOR PROJECT GENERAL NOTES.
2. REFER TO DRAWING C200 FOR KEY NOTES NOT APPEARING IN THE MARGIN.
3. COMPARE THE RATED ASSEMBLY INFORMATION CONTAINED ON THIS DRAWING WITH THE WORK OF ALL CONTRACTORS.
4. MAINTAIN THE RATED WALL CONSTRUCTION WHEN PENETRATING EXISTING WALLS WITH NEW ARCHITECTURAL, MECHANICAL, ELECTRICAL, PLUMBING, OR FIRE PROTECTION DEVICES.
5. NOTIFY ARCHITECT OF ANY DIMENSIONAL DISCREPANCIES BEFORE PROCEEDING WITH INSTALLATION OF NEW WORK.

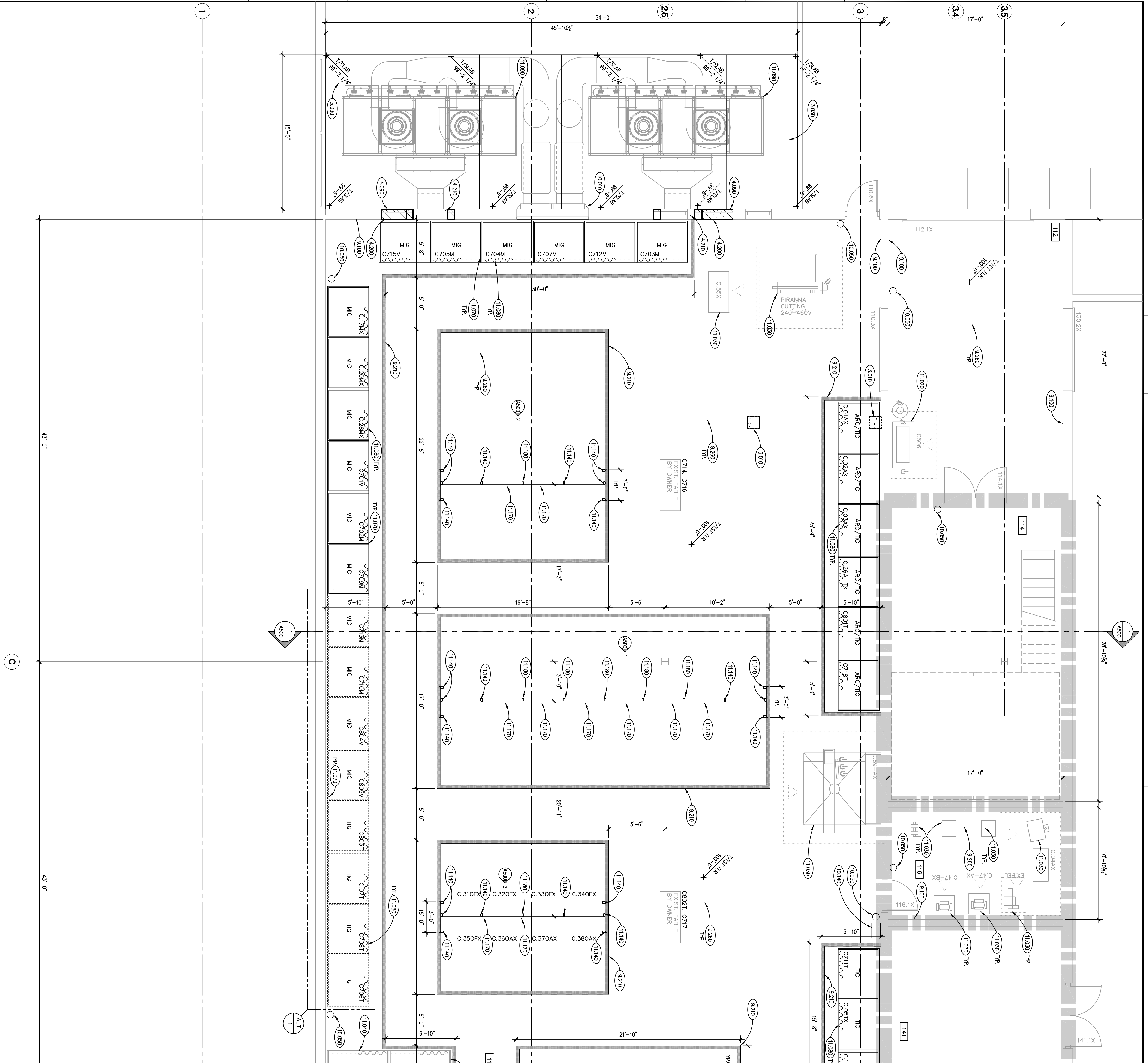
**EXISTING FIRE RATING SCHEDULE**



**KEY PLAN**



**FIRST FLOOR PLAN**  
SCALE: 1/4" = 1'-0"



**ELGIN COMMUNITY COLLEGE: ITR WELDING LAB RENOVATIONS**

ELGIN COMMUNITY COLLEGE  
1700 SPARTAN DRIVE  
ELGIN, ILLINOIS 60123

**ISSUED**

DATE	DESCRIPTION
04/04/11	BID DOCUMENTS

**JOB NO.** 11-188-686  
**DRAWN** CJH  
**CHECKED** CJH  
**APPROVED** CJH

**KLUBER**  
Architects + Engineers

901 N. Batavia Ave., Suite 301  
Batavia, Illinois 60510  
tel. 630.406.1213  
fax 630.406.9472  
www.klubercinc.com

**A300**  
SHEET NUMBER