



Date: April 16, 2015

Project:

To: Petrolia

Attn:

Recommended Equipment:

(10) Backdraft hood: 5' x 4.5'

(1) DBN-300 blower: 12,000CFM @ 8"sp

(1) SPC-1000 w/ARM1630P

Avani Environmental Intl. Inc.

95 Cypress Drive

Youngsville, NC 27596

www.avanienvironmental.com

Phone: (919) 570-2862

Fax: (919) 570-2863

Email: info@avanienvironmental.com

www.weldingbooths.com

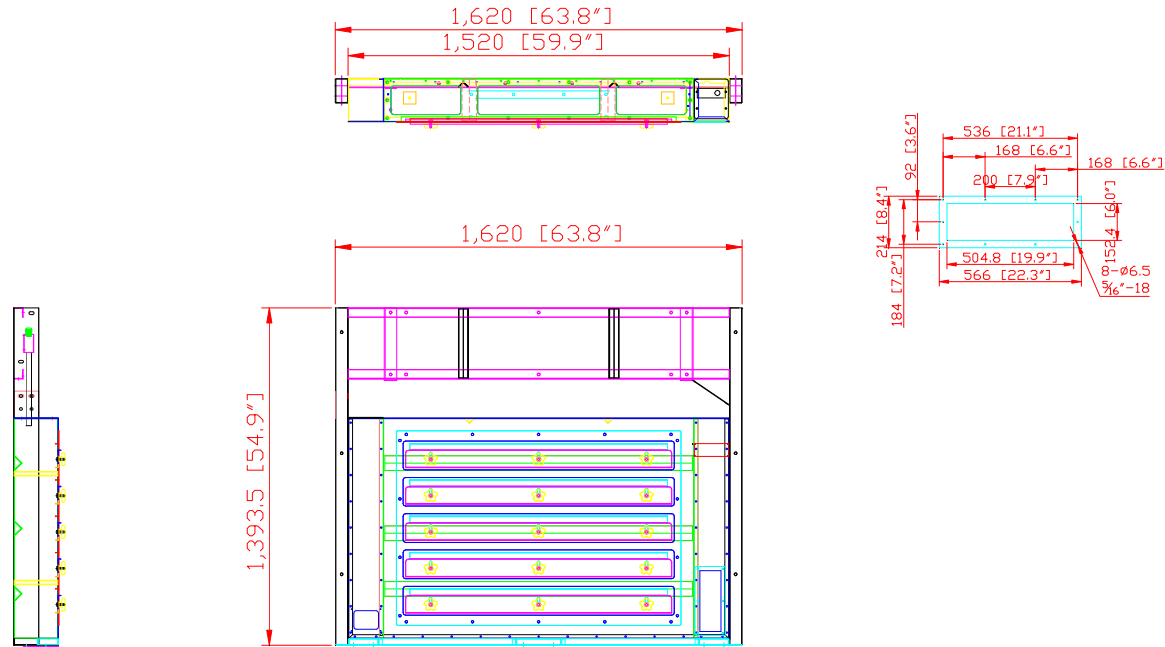
The drawings, AutoCAD, 3-D Models, and specifications are the property of Avani Environmental Intl. Inc. (AE) and may not be reproduced, distributed, modified, or otherwise used, except provided herein, without the express written permission of AE.

DO NOT SCALE

IF IN DOUBT ASK



Revisions			
Rev	Description	Date	Approved



PRELIMINARY

AVANI ENVIRONMENTAL INTL. INC. Sales Department
 95 Cypress Drive (919) 570-2862
 Youngsville, NC 27596 info@avanienvironmental.com

Drawn by:	Date	Name	Part Number:
Checked by:	2015-04-16	***	REVISION A

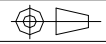
Title: Backdraft Hood: 5' x 4.5'

The drawings, AutoCAD, 3-D Models, and specifications are the property of Avani Environmental Intl. Inc. (AE) and may not be reproduced, distributed, modified, or otherwise used, except provided herein, without the express written permission of AE.

Size	Scale	Drawing Number:
A	1 = 15	Petrolia WB-5-4.5-IBB Page 1 of 1

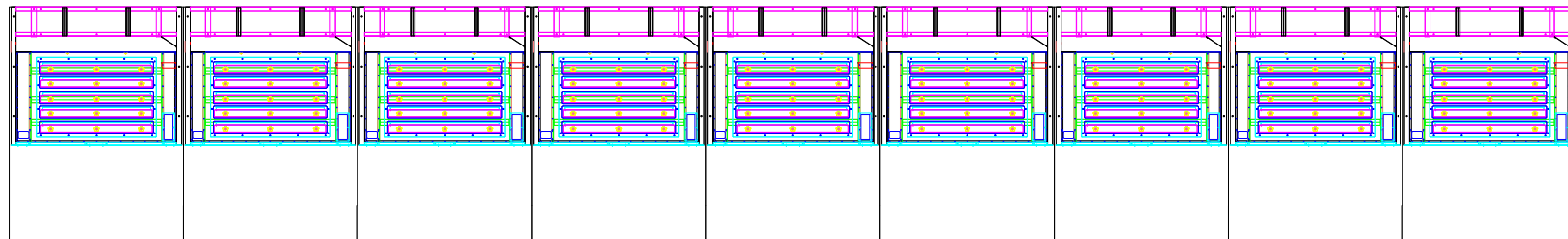
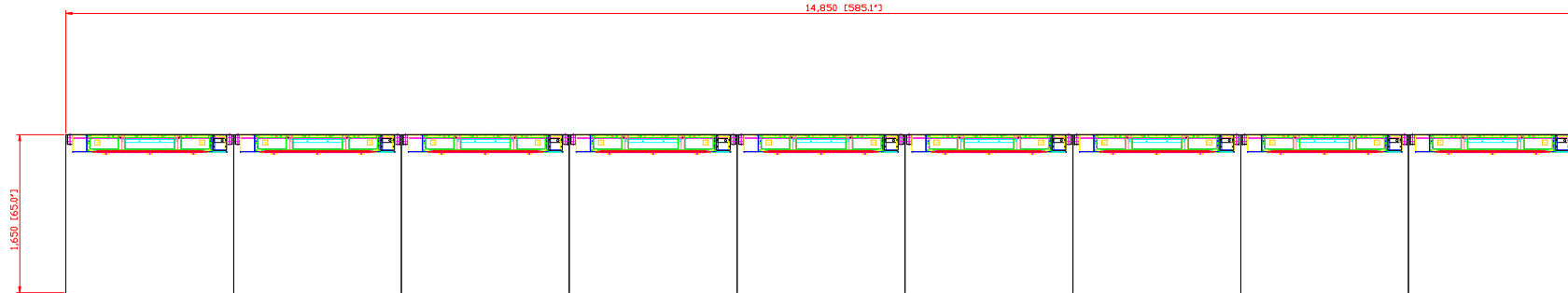
DO NOT SCALE

IF IN DOUBT ASK



Revisions

Rev	Description	Date	Approved
-----	-------------	------	----------



PRELIMINARY

AVANI ENVIRONMENTAL INTL. INC. Sales Department

95 Cypress Drive

Youngsville, NC 27596

(919) 570-2862

info@avanienvironmental.com

	Date	Name	Part Number:
Drawn by:	2015-04-16	***	REVISION A
Checked by:			

The drawings, AutoCAD, 3-D Models, and specifications are the property of Avani Environmental Intl. Inc. (AE) and may not be reproduced, distributed, modified, or otherwise used, except provided herein, without the express written permission of AE.

Title:
Backdraft Hood: 5' x 4.5' Layout

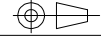
Size
A

Scale
1 = 15

Drawing Number:
Petrolia Backdraft Hood layout
Page 1 of 1

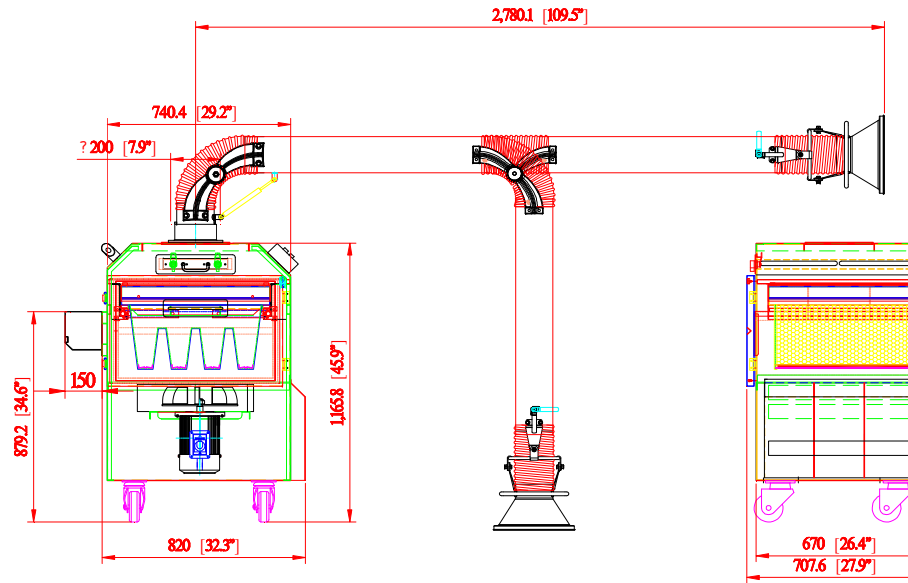
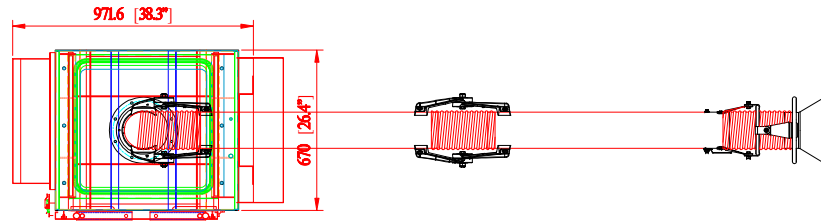
DO NOT SCALE

IF IN DOUBT ASK



Revisions

Rev	Description	Date	Approved



PRELIMINARY

AVANI ENVIRONMENTAL INTL. INC. Sales Department
 95 Cypress Drive
 Youngsville, NC 27596

(919) 570-2862
 info@avanienvironmental.com

Date	Name	Part Number:
2015-04-16	***	REVISION A
Checked by:		

Title: SPC-1000 w/ARM1630P

The drawings, AutoCAD, 3-D Models, and specifications are the property of Avani Environmental Intl. Inc. (AE) and may not be reproduced, distributed, modified, or otherwise used, except provided herein, without the express written permission of AE.

Size
A

Scale
1 = xx

Drawing Number:
Midway SPC-1000 w/ARM1630P
Page 1 of 1