



Date: April 16, 2015

Project:

To: Archer City

Attn:

Recommended Equipment:

(8) SDT-180-8 downdraft table w/8" outlets

(1) DBN-200 blower: 8000CFM @ 8"sp

(1) SPC-1000 w/ARM1630P

Avani Environmental Intl. Inc.

95 Cypress Drive

Youngsville, NC 27596

www.avanienvironmental.com

Phone: (919) 570-2862

Fax: (919) 570-2863

Email: info@avanienvironmental.com

www.weldingbooths.com

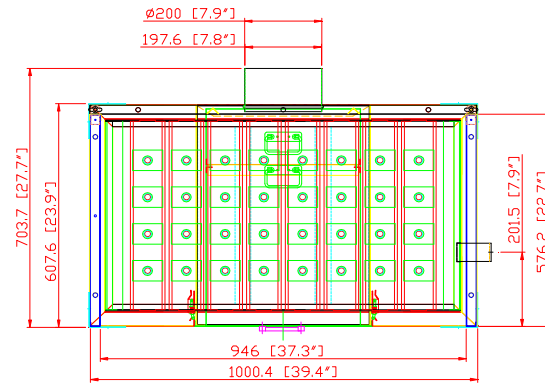
The drawings, AutoCAD, 3-D Models, and specifications are the property of Avani Environmental Intl. Inc. (AE) and may not be reproduced, distributed, modified, or otherwise used, except provided herein, without the express written permission of AE.

DO NOT SCALE

IF IN DOUBT ASK

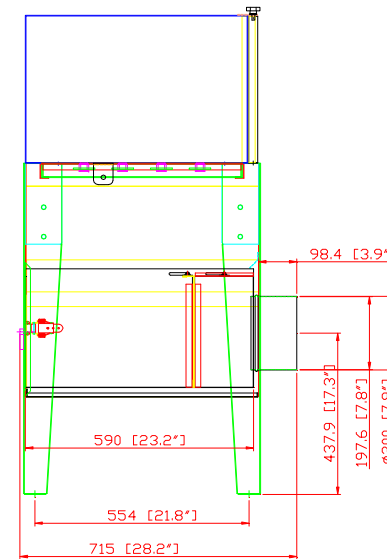
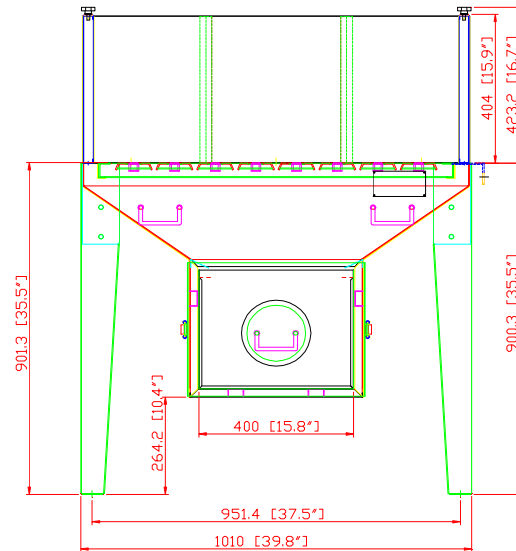


Revisions			
Rev	Description	Date	Approved



- SDT-180-8 DOWNDRAFT TABLE SPECIFICATION -

- motor: NIL.
- dimensions: 39.8"L x 27.7"D x 52.1"H
- cabinet: 12-16 Gauge
- full grated top: 36.1"W x 20.4"D
- 3 single wall: removable sheet metal sides/back
- *** outlet: dia. 8"
- paint color: powder coated Blue
- *** grated table top with 16mm fixture holes



PRELIMINARY

AVANI ENVIRONMENTAL INTL. INC. Sales Department
 95 Cypress Drive (919) 570-2862
 Youngsville, NC 27596 info@avanienvironmental.com

Drawn by:	Date	Name	Part Number: REVISION A	Title: SDT-180-8 Downdraft Table
Checked by:	2015-04-16	***		
The drawings, AutoCAD, 3-D Models, and specifications are the property of Avani Environmental Intl. Inc. (AE) and may not be reproduced, distributed, modified, or otherwise used, except provided herein, without the express written permission of AE.			Size C	Scale 1 = 20

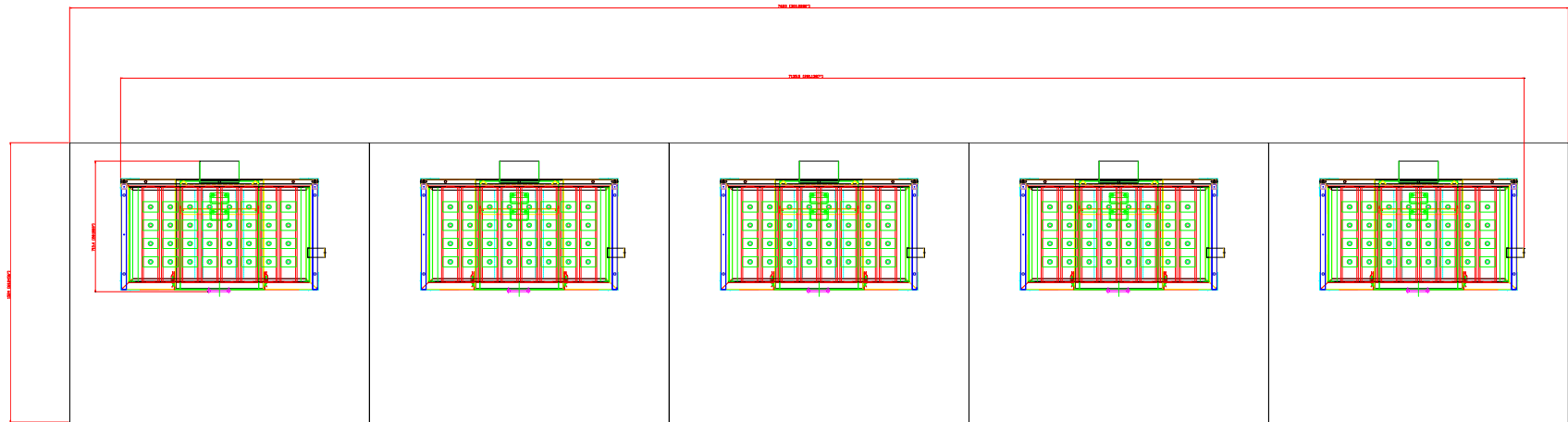
Drawing Number: Archer City SDT-180-8 Page 1 of 3

DO NOT SCALE

IF IN DOUBT ASK



Revisions			
Rev	Description	Date	Approved



PRELIMINARY

AVANI ENVIRONMENTAL INTL. INC. Sales Department
 95 Cypress Drive (919) 570-2862
 Youngsville, NC 27596 info@avanienvironmental.com

Date	Name	Part Number: REVISION A
Drawn by:	***	
Checked by:		

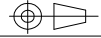
Title: **Archer City High School
 Layout - 5 x SDT-180**

The drawings, AutoCAD, 3-D Models, and specifications are the property of Avani Environmental Intl. Inc. (AE) and may not be reproduced, distributed, modified, or otherwise used, except provided herein, without the express written permission of AE.

Size C	Scale 1 = 20	Drawing Number: Archer City SDT-180-8 Page 2 of 3
------------------	-----------------	---

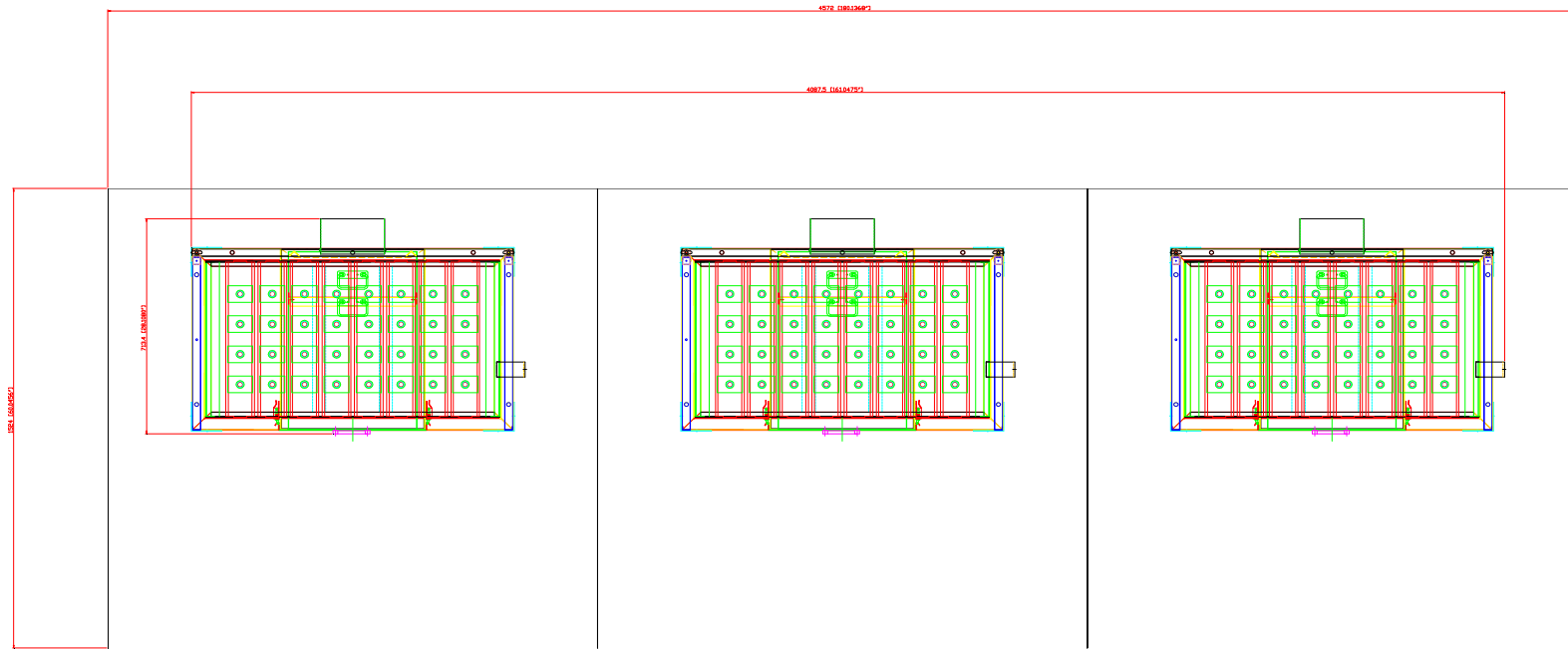
DO NOT SCALE

IF IN DOUBT ASK



Revisions

Rev	Description	Date	Approved
-----	-------------	------	----------



PRELIMINARY

AVANI ENVIRONMENTAL INTL. INC. Sales Department
 95 Cypress Drive (919) 570-2862
 Youngsville, NC 27596 info@avanienvironmental.com

Date	Name	Part Number:
2015-04-16	***	REVISION A
Checked by:		

Title: Archer City High School Layout
 3 x SDT-180-8

The drawings, AutoCAD, 3-D Models, and specifications are the property of Avani Environmental Intl. Inc. (AE) and may not be reproduced, distributed, modified, or otherwise used, except provided herein, without the express written permission of AE.

Size
C

Scale
 1 = 20

Drawing Number:
 Archer City SDT-180-8
 Page 3 of 3

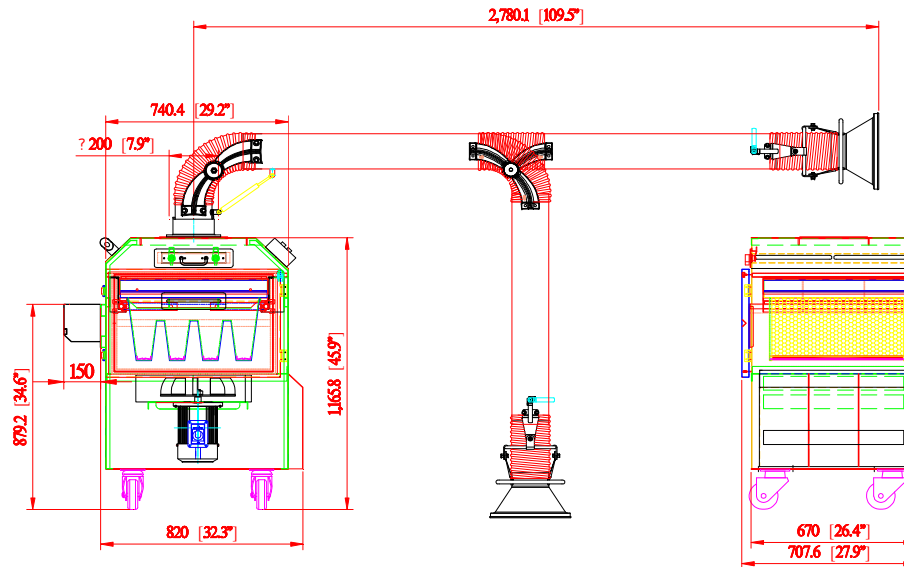
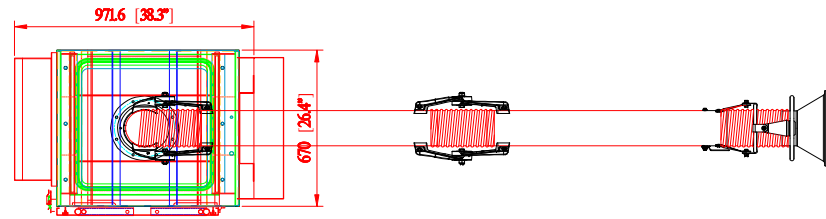
DO NOT SCALE

IF IN DOUBT ASK



Revisions

Rev	Description	Date	Approved



PRELIMINARY

AVANI ENVIRONMENTAL INTL. INC. Sales Department
 95 Cypress Drive (919) 570-2862
 Youngsville, NC 27596 info@avanienvironmental.com

Date	Name	Part Number:
2015-04-16	***	REVISION A

Title: SPC-1000 w/ARM1630P

The drawings, AutoCAD, 3-D Models, and specifications are the property of Avani Environmental Intl. Inc. (AE) and may not be reproduced, distributed, modified, or otherwise used, except provided herein, without the express written permission of AE.

Size A

Scale 1 = xx

Drawing Number:
 Archer City SPC-1000 w/ARM1630P
 Page 1 of 1