



REPRESENTED BY:

TODD AIR SOLUTIONS
101 E FISHER ST, 3rd FLOOR
SALISBURY NC 28144
Phone: 704 630-1101
Fax: 704 630-0528

DRAWING SUBMITTAL

CUSTOMER:

AVANI ENVIRONMENTAL
PO BOX 1279
YOUNGSVILLE, NC 27596

DATE: 2/18/13

ATTENTION: Mr. Matt Taylor

P.O. # 5787

CFV # 1301825

REPRESENTATIVE ORDER # CFQ# 234459

 x REFERENCE APPROVAL CORRECTION

QTY.	DRAWING NO.	DESCRIPTION
	- - - -	SPECIFICATION SHEET
	1301825	MODEL HDBI-300
	17110-300	DISCHARGE DAMPER
	27205	INLET FLANGE

REMARKS: 2D CAD FILE ALSO INCLUDED.

SPECIFICATION SHEET

CFV NO. 1301825	CUSTOMER ID NUMBER 3566220	PAGE 1		SCHEDULED SHIP DATE 2/21/13
S O L D	AVANI ENVIRONMENTAL PO BOX 1279 YOUNGSVILLE, NC 27596		CUSTOMER P.O. NUMBER 5787	BUYER Mr. Matt Taylor
			REPRESENTATIVE TODD AIR SOLUTIONS	REP. ORDER NO. CFQ# 234459
T O				

MARKS

Sales Order # 1952 CASE 1208

QTY.	DESCRIPTION	MODEL	ROT	DISCH	ARR	WHEEL/PROP	INLET				
1	HEAVY DUTY BI BLOWER	HDBI-300	CW	UB	4	SQBI 60%					
MOTOR DATA	HP	RPM	PH	CYCLE	VOLTAGE		FRAME	ENCLOSURE	SUPPLIED BY	INSTALLED BY	
	30	1750	3	60	190/380/50 & 230/460/60		286T	TEFC	CFV	CFV	
	CFV MOTOR PART NUMBER 37710033I							GROOVES	FXD/ADJ	BELT	
FAN DATA	DENSITY	TEMP.	ALTITUDE	CFM	SP	RPM	BHP	MOTOR SHEAVE		BUSHING	
AT OPERATING CONDITIONS	.075	70 °F.		10000	12.000	1750	27.100				
MOTOR VENDOR MODEL NUMBER	0304SDSR41A-P							FAN SHEAVE		BUSHING	

Record Print, 2D CAD Drawings

Complete Motor Description:

MTR, 30 HP, 1425/1750 RPM, 3PH, 50/60Hz, 190/380/50 & 230/460/60, TEFC, Prem Eff, FM, 286T, IP54, 1.15 SF, F Insul., 40C Amb., F1 Box, Cast Iron Frame, EQP Global SD Series, Toshiba

Maximum allowable wheel speed at 70°F is 2243 RPM

Estimated Shipping Weight: 1579 pounds

CLASS III WHEEL CONSTRUCTION

MANUAL CONTROLLED OPPOSED BLADE DISCHARGE DAMPER

DRILL DISCHARGE FLANGE STANDARD

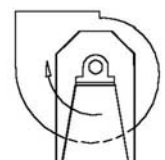
DRILL INLET FLANGE STANDARD BOLT CIRCLE ON-CENTERS

QUICK OPEN INSPECTION DOOR AT 3 O'CLOCK

DRAIN

TEFLON SHAFT SEAL

Submittal Email: cbendiksby@avanienvironmental.com

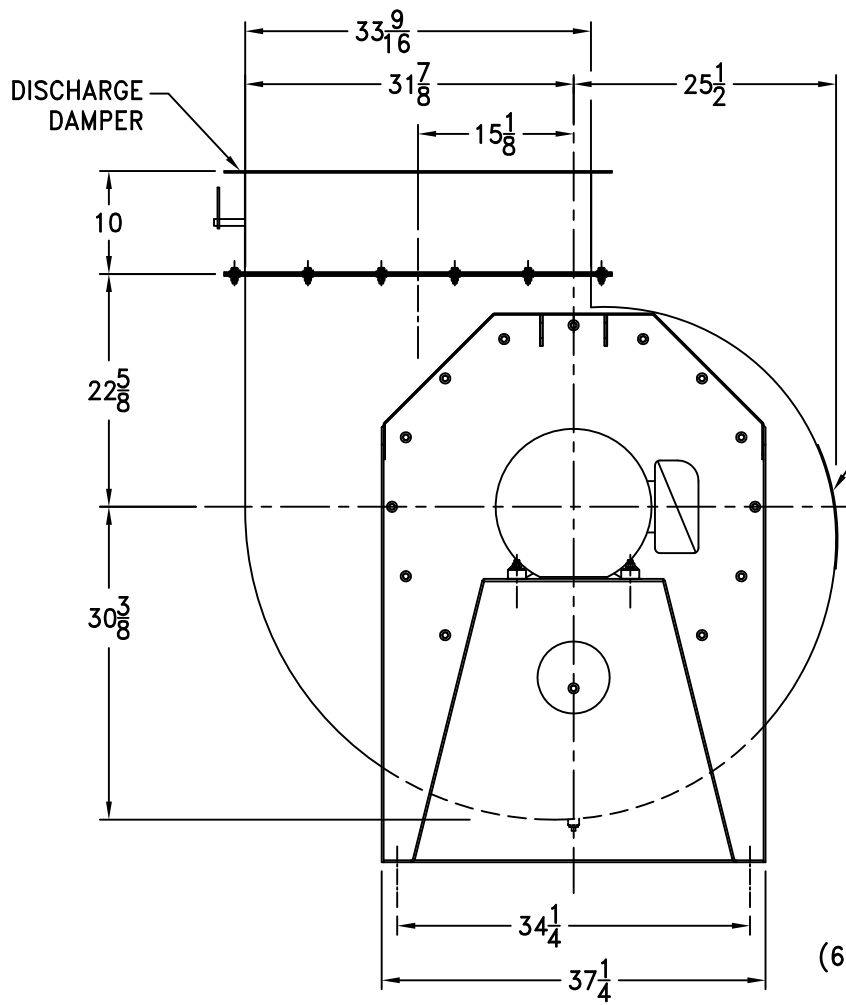


CW UB

DR. BY LG

DATE: 2/18/2013

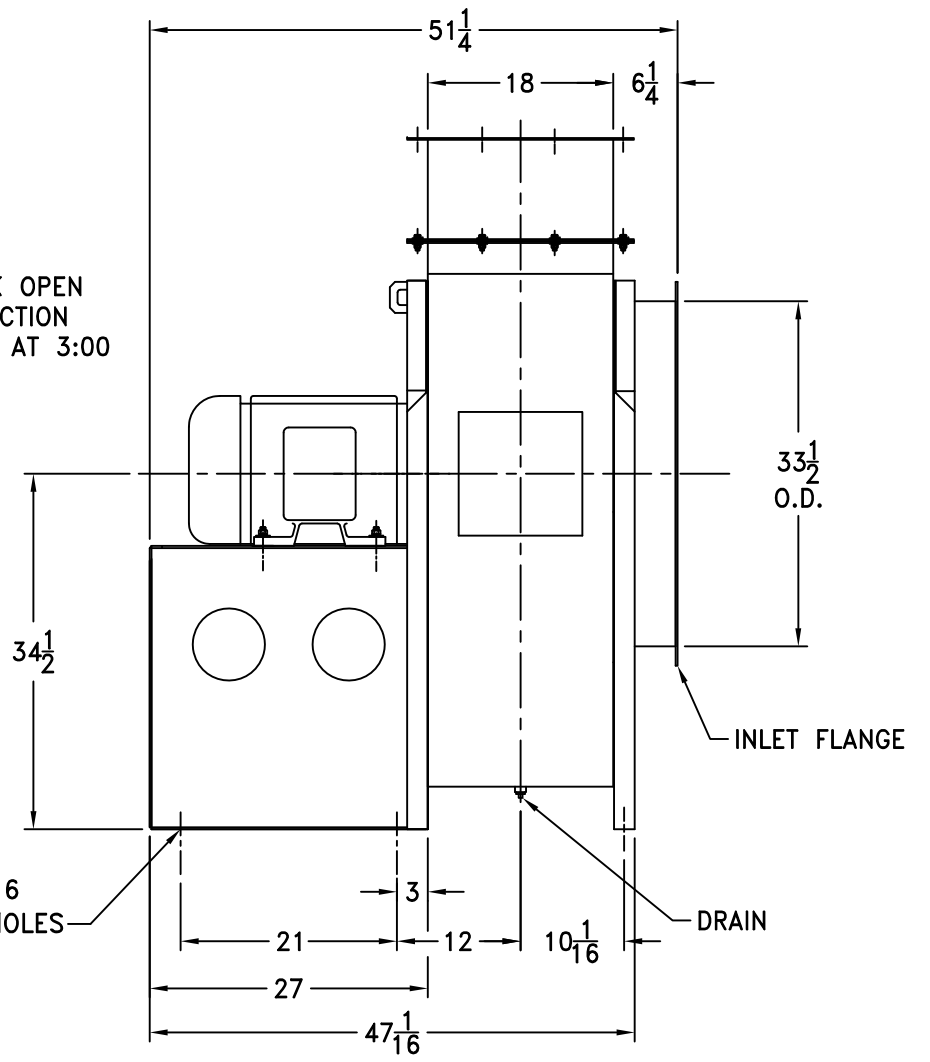
CERTIFIED




CW UP BLAST DISCHARGE SHOWN

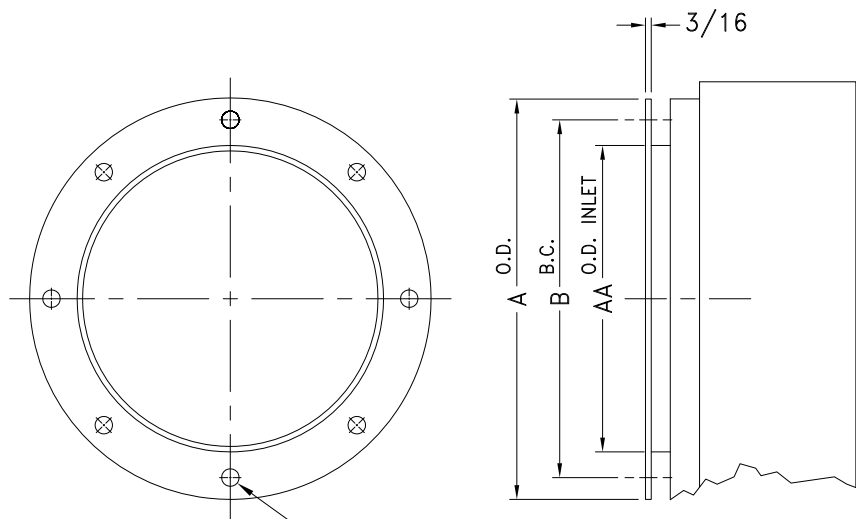
QUICK OPEN INSPECTION DOOR AT 3:00

±1/16
(6) 9/16 DIA. HOLES

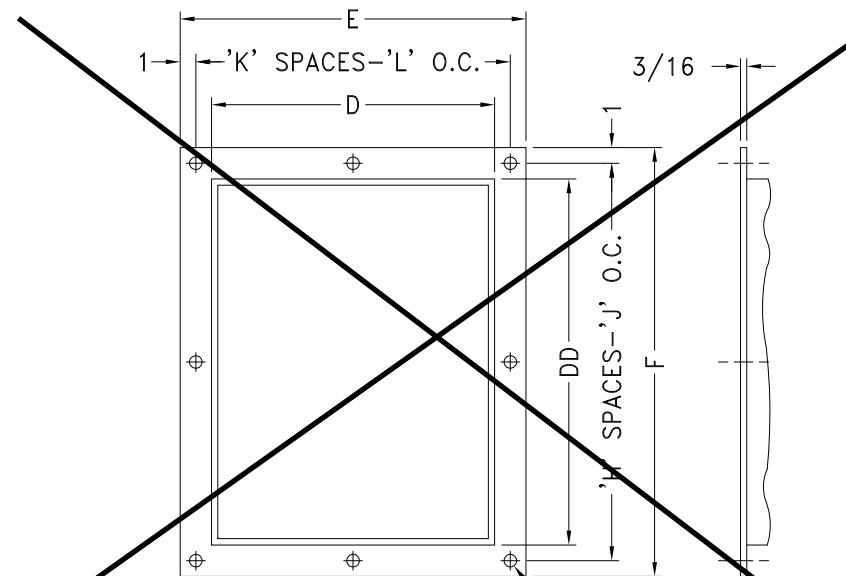


- NOTES:
1. MOTOR: 30 HP, 1750 RPM, 286T FRAME, TEFC.
 2. SEE DWG. A27205 FOR INLET FLANGE.
 3. SEE DWG. A17110-300 FOR DISCHARGE DAMPER.
 4. CLASS III, 60% WIDTH SQBI WHEEL CONSTRUCTION.
 5. TEFLON SHAFT SEAL.

				SUPERSEDES:		TOLERANCES: FRACTIONS ± 1/8 ANGLES: ± 1° DECIMALS: X.XXX = ±0.005 X.XX = ±0.060 X.X = ±0.120		SCALE: FULL IN CAD		 cincinnati fan 7697 SNIDER ROAD MASON, OHIO 45040	
				SIMILAR TO:		ALL DIMENSIONS IN INCHES UNLESS OTHERWISE SPECIFIED		DATE: 02/18/13			
								DR. BY: LG			
								CHK. BY:			
NO.	DESCRIPTION	DATE	INITIALS	CERTIFIED		MATERIAL:		ASSEMBLY		DRAWING NO. A 1301825	
REVISIONS										SHEET 1 of 1 REV.	



INLET FLANGE "N" HOLES, "P" DIA.

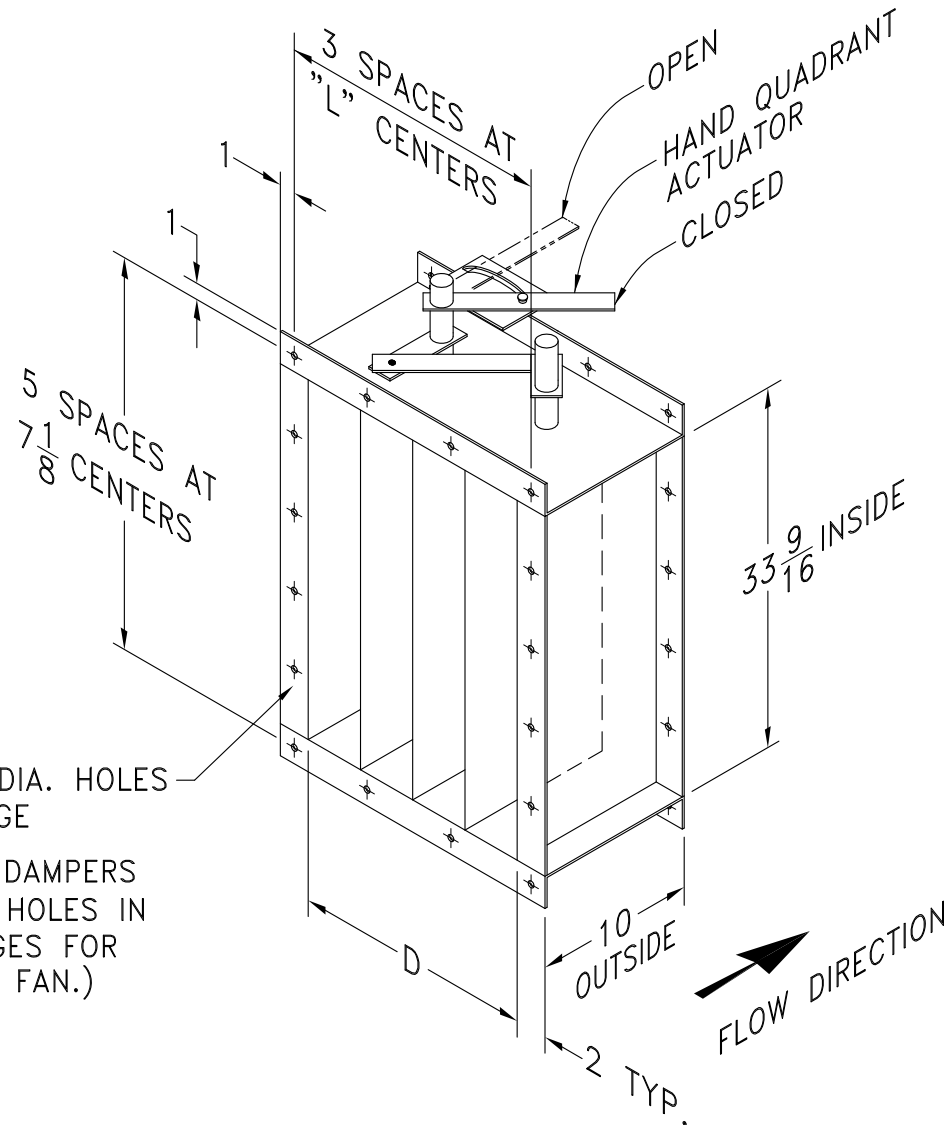


DISCHARGE FLANGE ① "M" 7/16 DIA. HOLES

INLET					
SIZE	A O.D.	B B.C.	N	AA DIA.	P
120	16	14-3/8	8	13-1/4	7/16
130	17-3/4	15-15/16	8	14-5/8	7/16
150	19-1/4	17-1/2	8	16-1/8	7/16
160	21-1/8	19-3/8	8	18	7/16
180	23-1/2	21-1/2	12	20	7/16
200	25-1/2	23-1/2	12	22	7/16
220	28-1/8	26-1/8	12	24-5/8	7/16
240	30-3/4	28-3/4	16	27	7/16
270	33-3/4	31-5/8	16	30	7/16
300	37-1/4	35-1/4	16	33-1/2	7/16
330	40-3/8	38-3/4	16	36-3/4	1/2
360	43-5/8	42	16	40	1/2

DISCHARGE									
D	E	F	H	J	K	L	M	DD	
9-3/8	13-3/8	17-11/16	2	7-27/32	2	5-11/16	8	13-3/4	
10-3/8	14-3/8	19-3/16	2	8-19/32	2	6-5/16	8	15-1/4	
11-3/8	15-3/8	20-3/4	3	6-1/4	2	6-11/16	10	16-13/16	
12-1/2	16-1/2	22-7/16	3	6-13/16	2	7-1/4	10	18-7/16	
13-7/8	17-7/8	24-1/2	3	7-1/2	2	7-15/16	10	20-3/8	
15-1/4	19-1/4	26-3/8	3	8-1/8	3	5-3/4	12	22-3/8	
16-7/8	20-15/16	28-7/8	4	6-23/32	3	6-5/16	14	24-7/8	
18-9/16	22-5/8	31-3/8	4	7-11/32	3	6-7/8	14	27-3/8	
20-7/16	24-1/2	34-1/8	4	8-1/32	3	7-1/2	14	30-1/16	
22-3/4	26-3/4	37-5/8	5	7-1/8	3	8-1/4	16	33-9/16	
24-7/8	28-7/8	40-7/8	7	5-9/16	5	5-3/8	24	36-3/4	
27-1/4	31-1/4	44-1/4	7	6-1/32	5	5-27/32	24	40-1/4	

NOTE:
 ① NOT AVAILABLE ON ANY MODEL FOR DOWNBLAST, BOTTOM ANGULAR DOWN OR TOP ANGULAR DOWN DISCHARGE POSITIONS.
 DISCHARGE FLANGE IS STANDARD ON SIZES -270 THRU -360.



(16) 7/16 DIA. HOLES EACH FLANGE

(STANDARD DAMPERS HAVE BOLT HOLES IN BOTH FLANGES FOR BOLTING TO FAN.)

NOTES:

1. OPPOSED BLADE IS STANDARD. PARALLEL BLADE IS OPTIONAL.
2. DAMPER BLADES WILL BE PERPENDICULAR TO FAN SHAFT.
3. STANDARD MATERIAL IS CARBON STEEL WITH RUST INHIBITING PRIMER. OPTIONAL MATERIAL _____.
4. STANDARD CONSTRUCTION MAX. TEMPERATURE: 300° F.
 OPTIONAL HIGH TEMPERATURE CONSTRUCTION MAX. TEMPERATURE: 800° F.

% WIDTH	D	L
100	22-3/4	8-1/4
95	22-3/16	8-1/16
90	21-17/32	7-27/32
85	20-31/32	7-21/32
80	20-13/32	7-15/32
75	19-3/4	7-1/4
70	19-3/16	7-1/16
65	18-5/8	6-7/8
<input checked="" type="checkbox"/> 60	17-31/32	6-21/32
55	17-13/32	6-15/32
50	16-27/32	6-9/32
45	16-3/16	6-1/16

