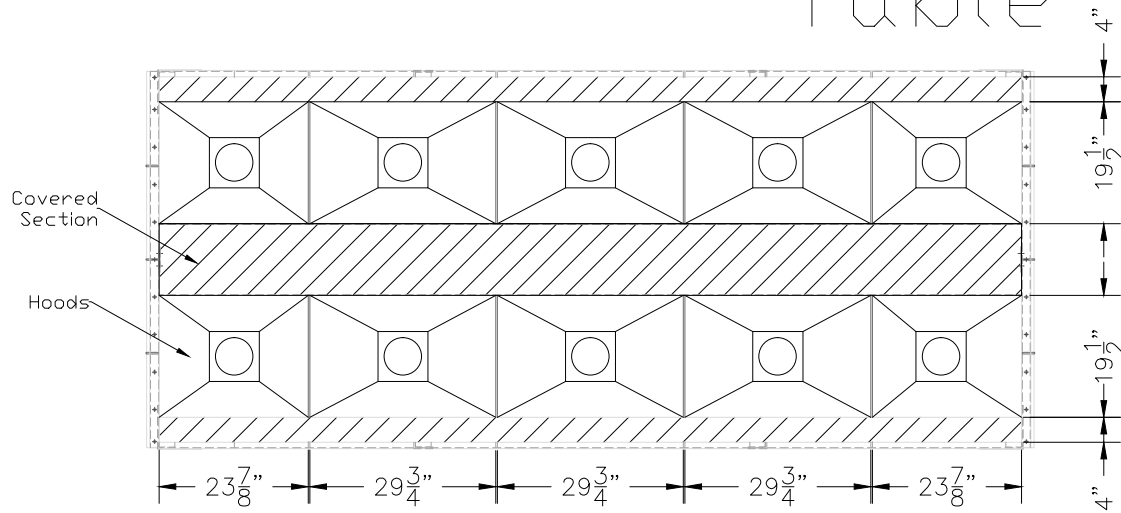
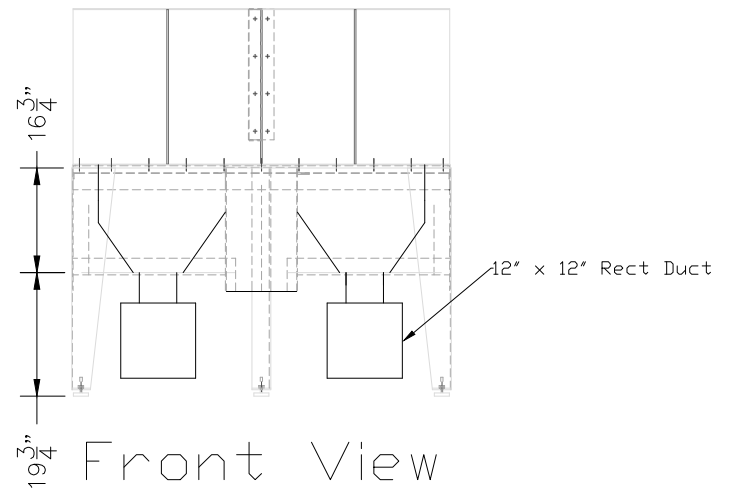
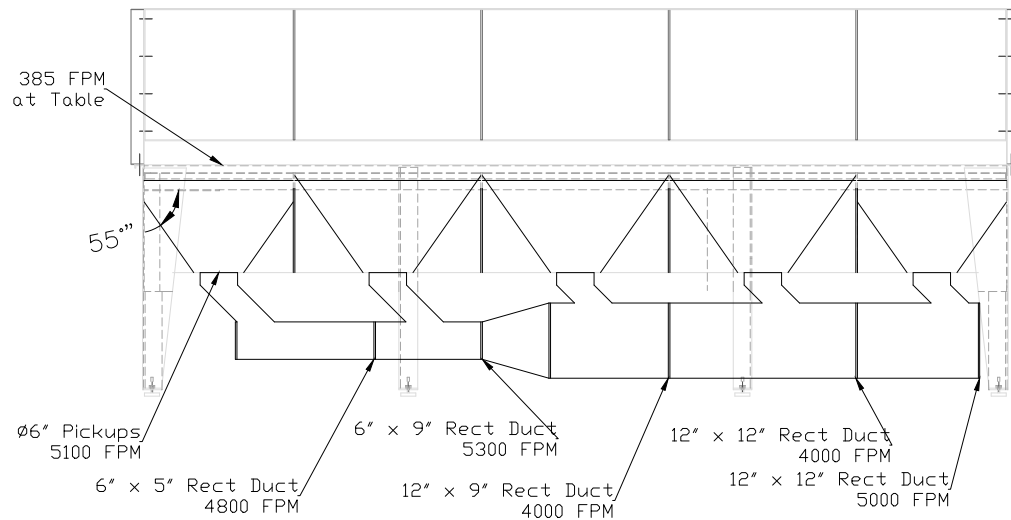


Modified Downdraft Table



Notes:

1. Capture velocity at surface calculated with grate included (70% open)
2. Will support from bottom of table (not shown)
3. Will include support system for Fork-Lift (not shown)



Avani Environmental Intl.
95 Cypress Drive
Youngsville, NC 27596
P# 919-570-2862 F# 919-570-2863

Avani

Project: Eaton Electrical	
Drawing: Modified DDT	
Date: 3/6/2013	Drawn by: MDT
Sheet No: 1 of 1	Rev.: 0