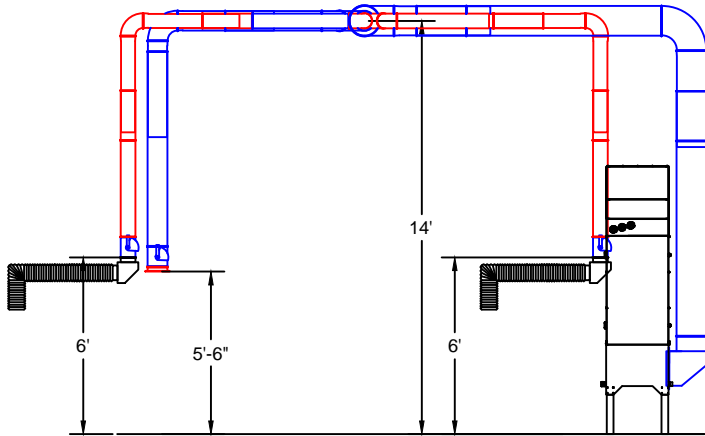


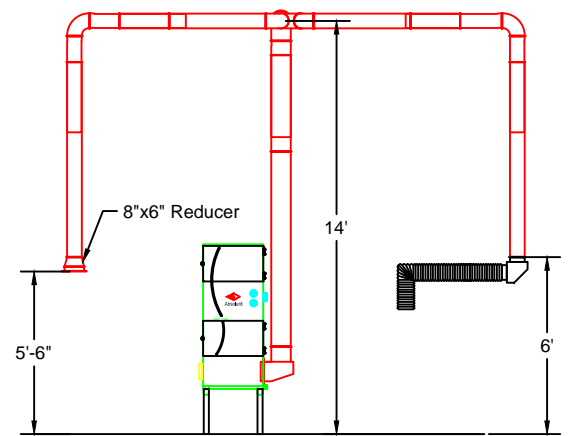
Eaton SO21615 Duct Layout

Future Install

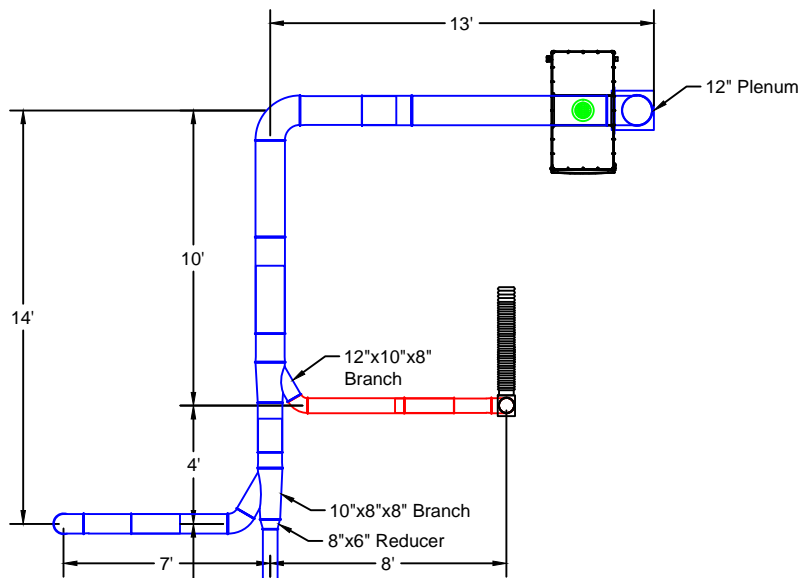


Elevation View

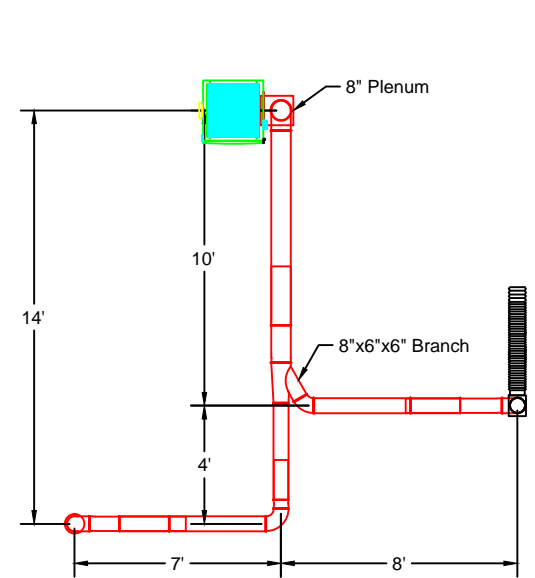
Current Install



Elevation View



Plan View



Plan View

Notes:

1. Will hang from ceiling
2. Duct on site in red, duct to be installed in blue
3. Avani Environmental standard installation crew is quoted out per day based on the above drawings and approvals. Any changes, modifications, downtime, or inability to perform our work above and beyond the control of Avani Environmental will charge an additional \$1,000 per work day (5 or more hours) per crew above what was initially quoted.

Avani Environmental Intl. Inc.
95 Cypress Drive
Youngsville, NC 27596
P# 919-488-2862 F# 919-488-2863

Avani

Project: Eaton SO21615

Drawing: Approval Drawing

Date: 7/8/14

Drawn by: MDT

Sheet No: 1 OF 1

Rev: 1