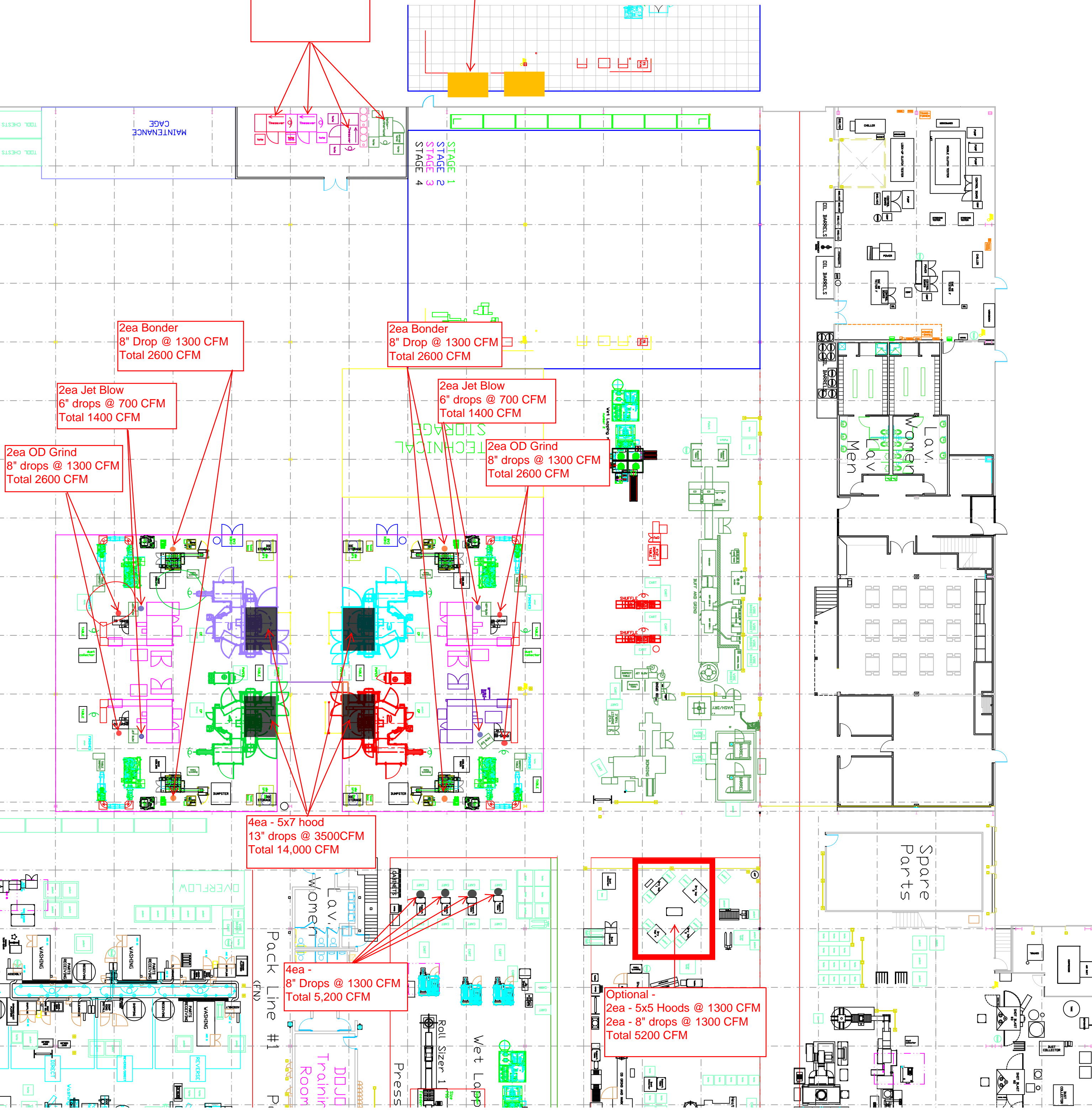


Minimum System Specifications:
Air-To-Cloth = 3.5:1 @ 14" static
Duct Transport Velocity = > 3500 fpm
< 4000 fpm

4ea - Time Saver
6" drops @ 700 CFM
Total 2840 CFM

Proposed Collector Location



2ea Bonder
8" Drop @ 1300 CFM
Total 2600 CFM

2ea Bonder
8" Drop @ 1300 CFM
Total 2600 CFM

2ea Jet Blow
6" drops @ 700 CFM
Total 1400 CFM

2ea Jet Blow
6" drops @ 700 CFM
Total 1400 CFM

2ea OD Grind
8" drops @ 1300 CFM
Total 2600 CFM

2ea OD Grind
8" drops @ 1300 CFM
Total 2600 CFM

4ea - 5x7 hood
13" drops @ 3500CFM
Total 14,000 CFM

4ea -
8" Drops @ 1300 CFM
Total 5,200 CFM

Optional -
2ea - 5x5 Hoods @ 1300 CFM
2ea - 8" drops @ 1300 CFM
Total 5200 CFM