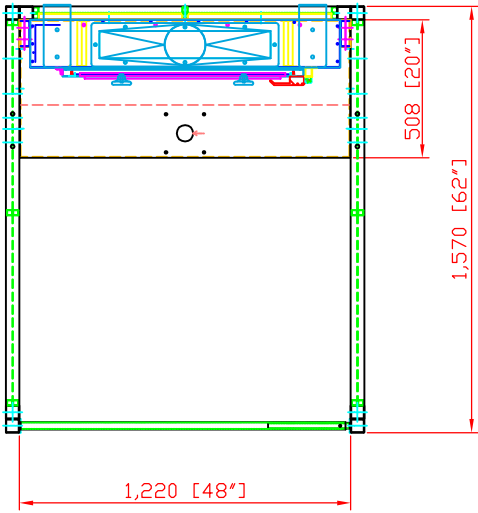


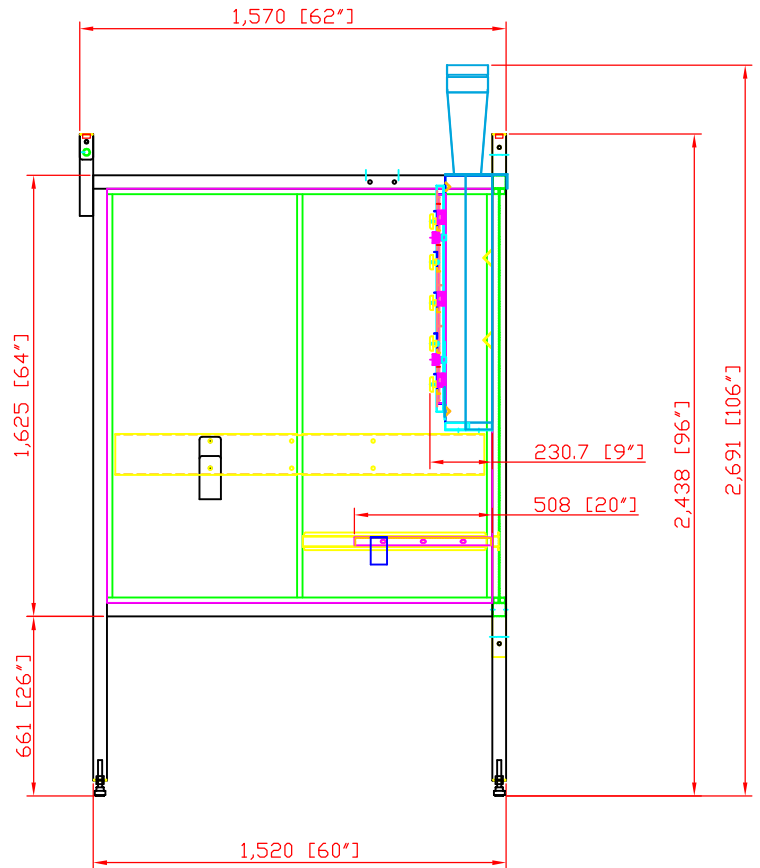
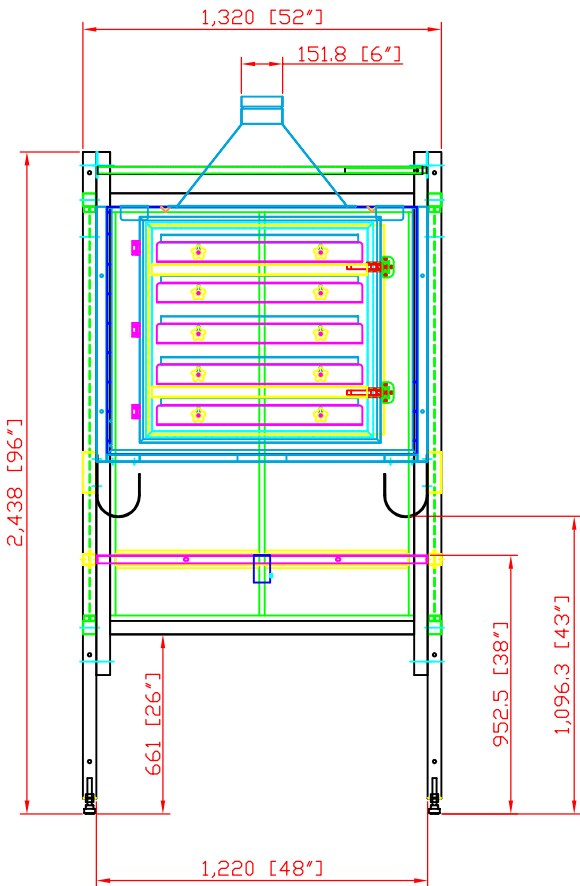


Revisions			
Rev	Description	Date	Approved



WB-1045-IBB WELDING BOOTH SPECIFICATIONS

- A. Dimensions: 48" W x 60" D x 8.0' H
- B. Panel Steel: 12-Gauge
- C. Frame Steel: 2.0-Inch Square Tube, 11-Gauge
- D. Cross Bracing Steel: 1.0-inch Square Tube, 11-Gauge
- E. Construction: Panel is stitch welded to frame steel
- F. Rear Panel Shelf: 48" x 20" D; 12-gauge with 2.0-inch square tube under framing with cross support; shelf is fixed in place, (non-adjustable)
- G. Legs feature adjustable leveling feet
- H. Finish: Industrial Power Coat; Color: Blue
- I. Backdraft hood: 48.1" x 37" with Square to round 6" outlet



PRELIMINARY

AVANI ENVIRONMENTAL INTL. INC. Sales Department
 95 Cypress Drive (919) 570-2862
 Youngsville, NC 27596 info@avanienvironmental.com

Drawn by:	Date	Name	Part Number:	Title: WB-1045-IBB Welding booth w/Backdraft
Checked by:	2015-04-29	***	REVISION A	
The drawings, AutoCAD, 3-D Models, and specifications are the property of Avani Environmental Intl. Inc. (AE) and may not be reproduced, distributed, modified, or otherwise used, except provided herein, without the express written permission of AE.				

Size	Scale	Drawing Number:
B	1 = 25	Delaware Tech WB-1045-IBB Page 1 of 1