

1. Dramatically undersized:
 - The F-900 at best is approximately 500 CFM once ducted. The internal drum creating the air volume can handle static pressure. Each screw machine requires 600-800 cfm for evacuating the cavity properly. The F-900's capability should be (1) screw machine only. In many cases, you have one F-900 ducting to four and five screw machines.
2. Piping Sized Incorrectly:
 - The pipe runs remain a constant as currently installed. You have (4) 6" drops going into a 6" header which causes dramatic air losses as well additional static pressure. This is not correct simply be simple math.
 - The second problem with pipe runs is the straight tees or plumber tees. All drops should be transitioned with either a 30 or 45 degree and then 90 degree down to the machine.

The current mist collection systems are installed and appear very professional, however they will never be able to meet the objectives set forth for the following reasons:

Evaluation of Existing Mist Collection:

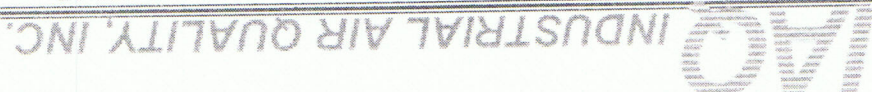
Thanks for the time and the plant tour while in Buffalo. I have put together a BUDGETARY type proposal for your review based on my plant visit, proper engineering and air flow dynamics. When you build a world class manufacturing facility like Curtis has accomplished, there should be no ambient haze providing the mist collection systems are performing as expected. In your case, there is an obvious haze in the plant and the mist collectors will never meet the objectives based on the reasons listed below.

Dear Bob:

Re: Plant Evaluation

Bob Filipski
 Maintenance Supervisor
 Curtis Niagara LLC
 50 Thielman Drive
 Buffalo, NY 14206

April 5, 2005



- This is general ventilation information found in the Industrial Ventilation Guide (22nd Edition)

3. Efficiency Ratings:

- The Royal Filtermist Series of mist collectors installed will never meet the projected OSHA requirements unless a final HEPA or Afterfilter is added. This will reduce the air flow by about 35% and will require maintenance several times per year.

OSHA is recommending that the permissible allowance for metal working fluids end up at .5 mg/m³. This will never happen due to the cost and the big three automobile manufacturers. It will end up anywhere from .8 – 1.5 mg/m³. Your current system can not come close to meeting these objectives and would be surprised if they meet the current standards of 5.0 mg/m³.

I would recommend, we schedule a time to provide testing and air flow calculations. This will take all day and we will provide this service at no charge providing you understand the cost of replacement and the correct solution.

Project Installed Based on (4-5) Screw Machines Per Cell:

- Absolent ODF4000	\$11,240.00
- Nordfab Ducting Package	\$3,660.00
- Mechanical Install	\$3,500.00
Total Estimated Cost Per Line:	\$18,400.00

This would be guaranteed for two years "no maintenance" and less than .5 mg/m³ being exhausted back into the plant. Providing the plant is addressed, we will also guarantee "no haze" in the plant also. Other options are central systems or individual systems. For example, an ODF-1000 for each machine is \$3,900.00 plus approximately \$1,500.00 for pipe and installation.

Again, thanks for the time and this is only a budgetary number and general information. I will be happy to set up a time to meet with everyone involved in making this type of decision.

Regards

Ed Sithes

President/ IAQ

North America Area Manager/ Absolent, Inc.

April 1, 2005

Robert Filipi
 Maintenance Supervisor
 Curtis Niagara LLC
 50 Thielman Drive
 Buffalo, NY 14206

Re: Chip Conveyor Storage Mist Controls

Dear Bob:

We appreciate this opportunity and are pleased to offer the following proposal for furnishing quality Absolent Fiber Bed Collection Equipment for the mist being generated from the blow system into the waste containment hood for exhaust mist. The Absolent unit is designed to be installed inside the building and ducted to the outside to a custom hood for exhaust mist. The air is then returned the building at 99.9997% efficiencies.

Absolent Fiber Bed Collectors are manufactured in Sweden and have been engineered to address heavy industrial applications that the typical (main stream) media or electronic air cleaners could/can not meet. This could be either clean air requirements, practical maintenance schedule's, but more importantly, future permissible allowances of .5 mg/m³.

Design Criteria

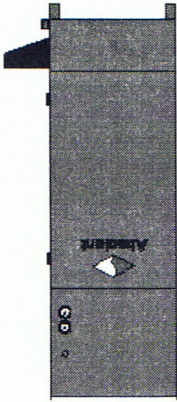
The proposed solution shall be maintenance free for a minimum of two-years. *This means, that Curtis Niagara will not be required to provide maintenance to the fiber beds or the final HEPA filter for two years.* After two years the fiber bed cassette can be removed, washed and reinstalled for continued usage. The final HEPA filter will require replacement anywhere from two years to five years. *The proposed solution is guaranteed not to exceed .5 mg.m³ exhausted from the ODR-2000 for a minimum of two years*

Recommendation

The Absolent model ODR-2000 is being quoted to address the dumpster creating positive pressure. The unit is vertical and can be mounted on a stand, hung from the ceiling, or set on the floor. The cost is as follows:

Absolent ODR-2000 Mist & Smoke Collector Price: \$9,050.00

- Configuration: Vertical
- Motor: (1) 3.5 HP (Direct Drive Fans)
- Dimensions: L 30.6" x W 27.6" x H 86.0"
- Inlet: 8.0"
- Outlet: Top of the unit. Outlet connection accessory
- Weight (Clean filters): 617 Lbs.
- Air Volume: 1180 CFM
- Noise Level: 60 dBA @ 3 Meters from Outlet Grille
- Electrical: 254/480V, 3-Phase, 60Hz
- Filtration: Fiber Bed 1: 123 Sq. Ft.
 Absolute Filter: 219 Sq. Ft.
- Filter access: Front Load Filter Accessibility (Door w. Hinges)
 Drainage: Inlet Plenum w. Drain pipe (1.1/4")



Gauges:

Magnehelic Gauges/ 0-4" : (2 Total)

\$1,826.00

Nordfab QF Welded Seam Ducting & Custom Hood

- Flanged Inlet Connections for Absolent and Custom Hood (Over Exhaust Vent)

- Pipe, Elbows, Fittings, Hose Connections, Etc.

- Fire Damper (In-Line), Clamps, Pins, and Hardware

- Drain Assembly (with valve)

* Pipe Run Based on a Maximum of 30 Linear Feet

\$1,690.00

Mechanical Installation

- Install (1) Absolent Fiber Bed Collector

- Install Inlets and Transitions

- Install Drain Assembly and Run Drain Line Back to Sump

- Labor, Travel and Living Expenses

* Electrical By Others

Performance Guarantee:

Industrial Air Quality, Inc. (IAQ), along with Absolent will guarantee the complete system (all filters, fan, motor, gauges, etc for a period of two years. IAQ guarantees our installation for period of one year against workmanship, leaks, and faulty piping.

Freight/FOB:

Absolent (Atlanta, GA)

Nordfab Ducting (Thomasville, NC/ IAQ Warehouse, Youngsville, NC)

Materials (IAQ Warehouse & Manufacturers)

Terms:

50% with Purchase Order

50% Net 30 Upon Installation Completion

Drawings:

IAQ will provide complete AutoCad drawings for the project. This will also allow you to install in house or via a local contractor if you choose not to use IAQ for the mechanical phase. Drawings are required to be signed off prior to any fabrication.

Again, I appreciate the opportunity to present this proposal for your consideration. Please call me if I can be of further assistance. IAQ looks forward to working with you on this project.

Respectfully,

Ed Sithes
President