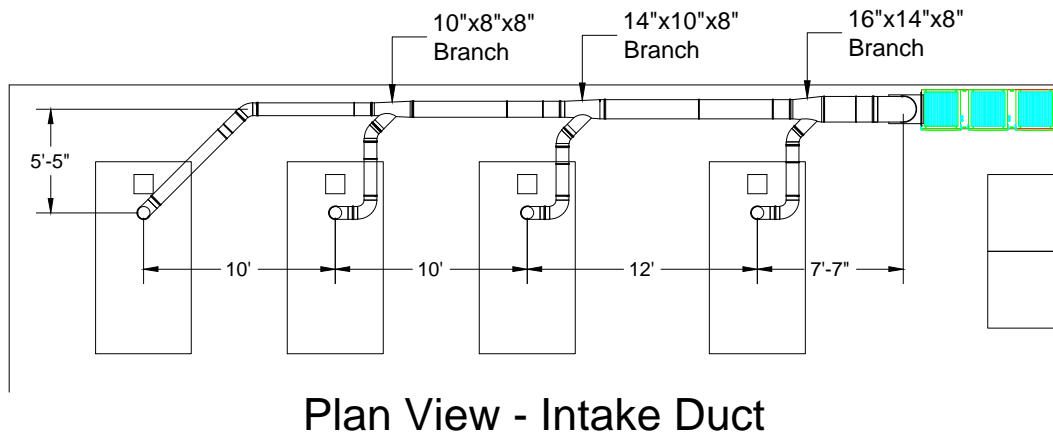
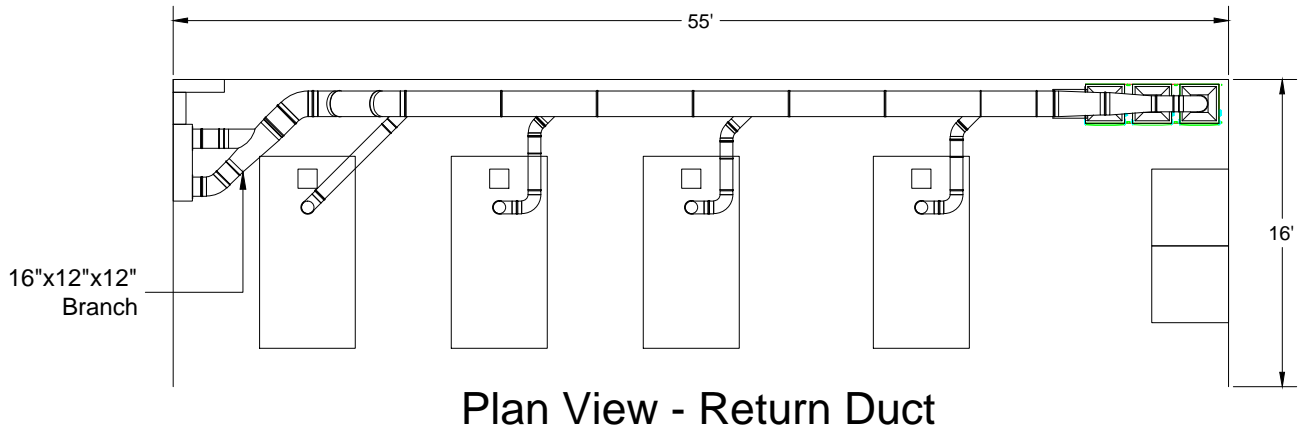
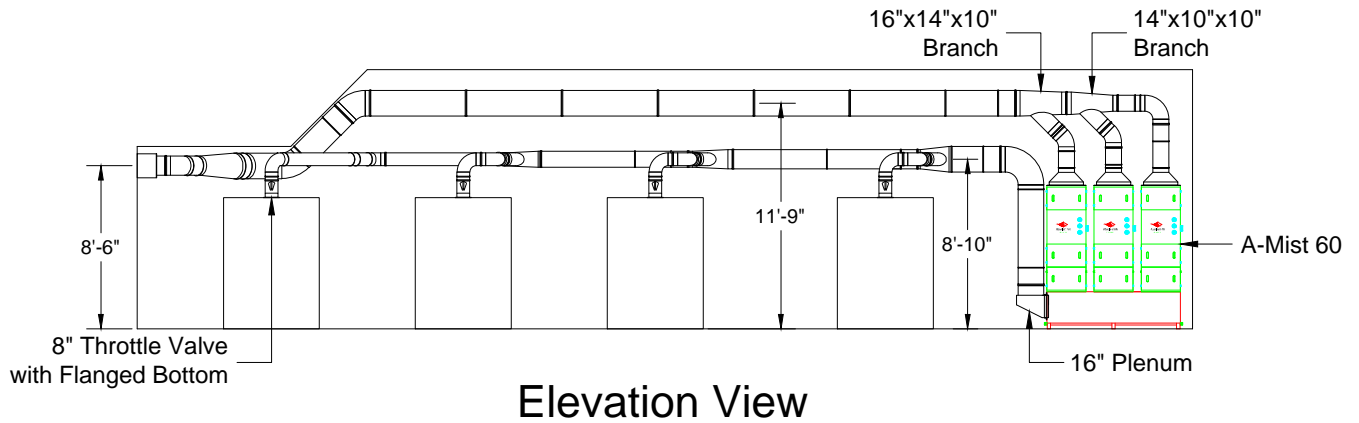


# Cummins SO21627 A-Mist 60 Duct Layout



**Notes:**

1. Clamp together duct
2. Support intake from wall
3. Support return from ceiling
4. Demo included
5. Avani Environmental standard installation crew is quoted out per day based on the above drawings and approvals. Any changes, modifications, downtime, or inability to perform our work above and beyond the control of Avani Environmental will charge an additional \$1,000 per work day (5 or more hours) per crew above what was initially quoted.

Avani Environmental Intl. Inc.  
95 Cypress Drive  
Youngsville, NC 27596  
P# 919-488-2862 F# 919-488-2863

**Avani**

**Project: Cummins SO21627**

**Drawing: A-Mist 60 Duct Layout**

**Date: 10/15/14**

**Drawn by: MDT**

**Sheet No: 1 OF 1**

**Rev: 0**