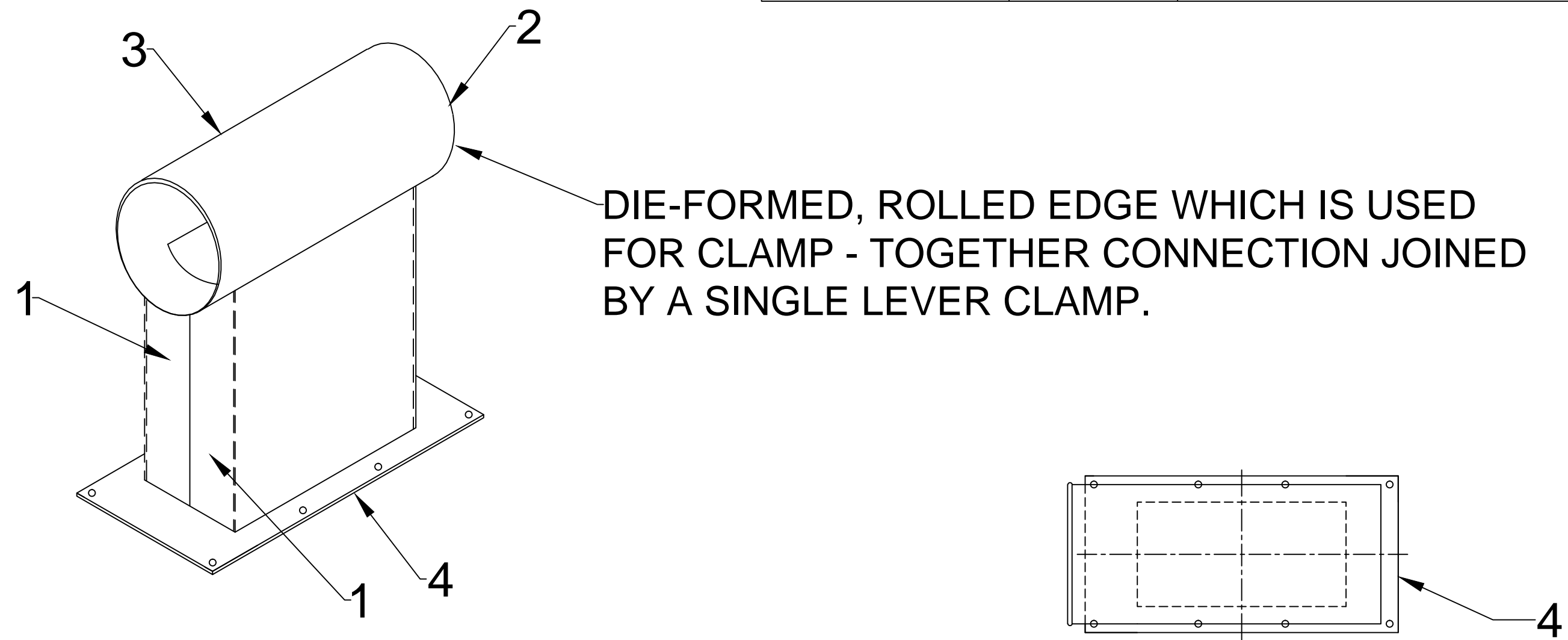


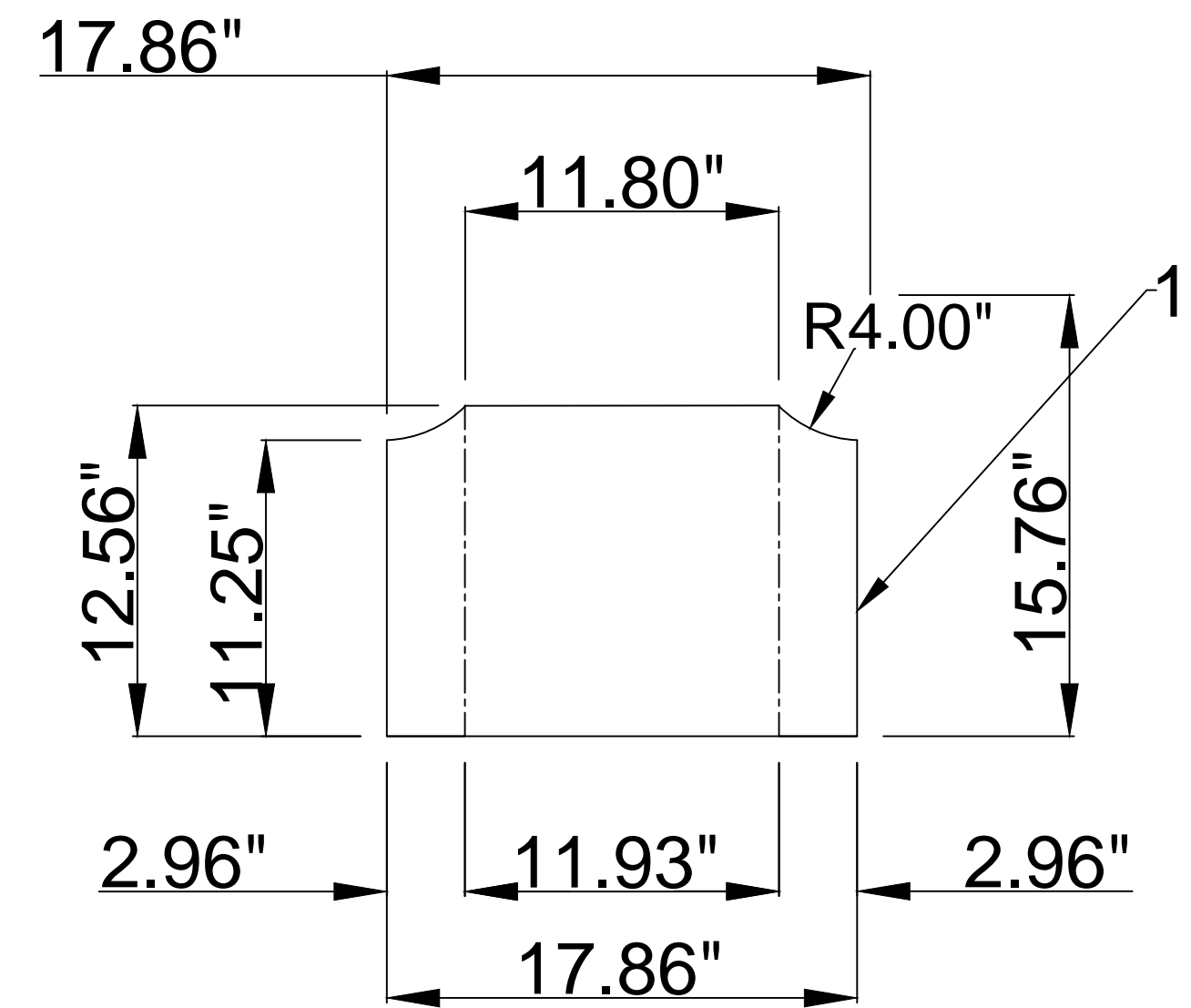
ONE - RECT TO ROUND ADAPTER CUT LIST - "MK."0000-GCI-6012"					
ITEM NO.	QTY.	DESCRIPTION	LENGTH	WEIGHT LBS.	MATERIAL
1	2	20 GA. SHEET		0.3000	A569
2	1	20 GA. SHT, 7.93 DIA.		0.1000	A569
3	1	K&B 20 GA QF 8" PIPE (P/N 10008, STD LENGTH 59.06")	CUT TO LENGTH	0.5000	PLN.STL.
4	1	SHT .14 X 9.00	18.0000	0.6000	A569



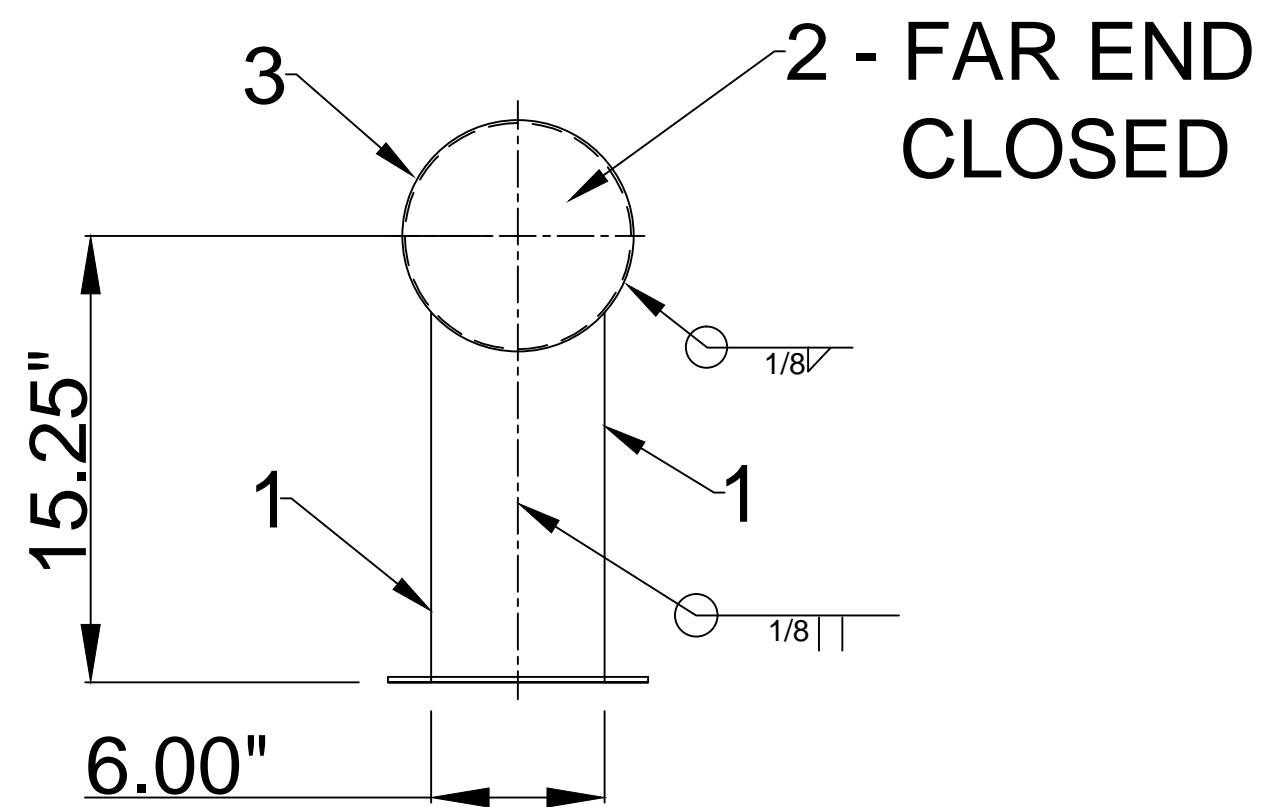
DIE-FORMED, ROLLED EDGE WHICH IS USED FOR CLAMP - TOGETHER CONNECTION JOINED BY A SINGLE LEVER CLAMP.

CABINET VIEW

TOP VIEW

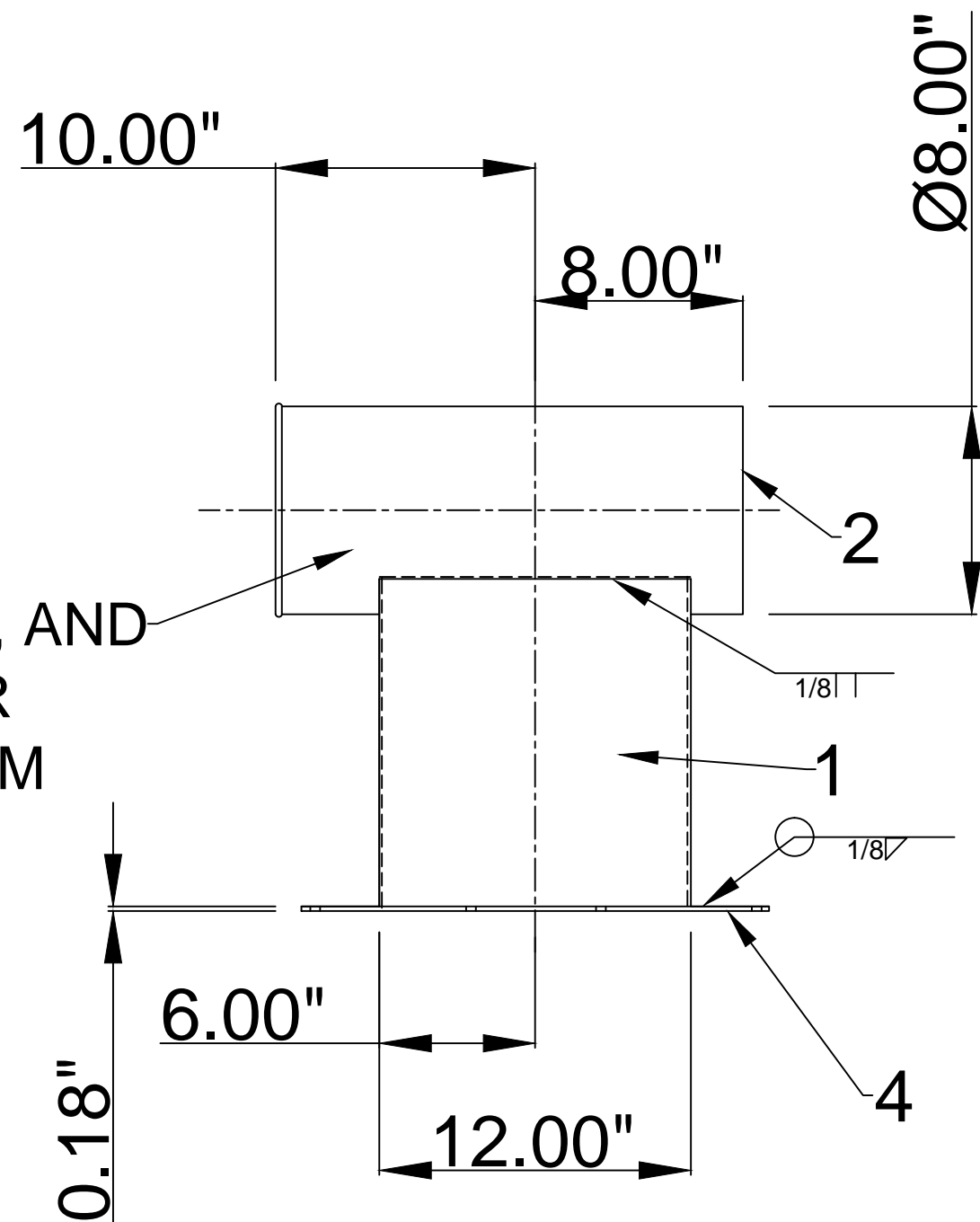


FOLD DETAIL

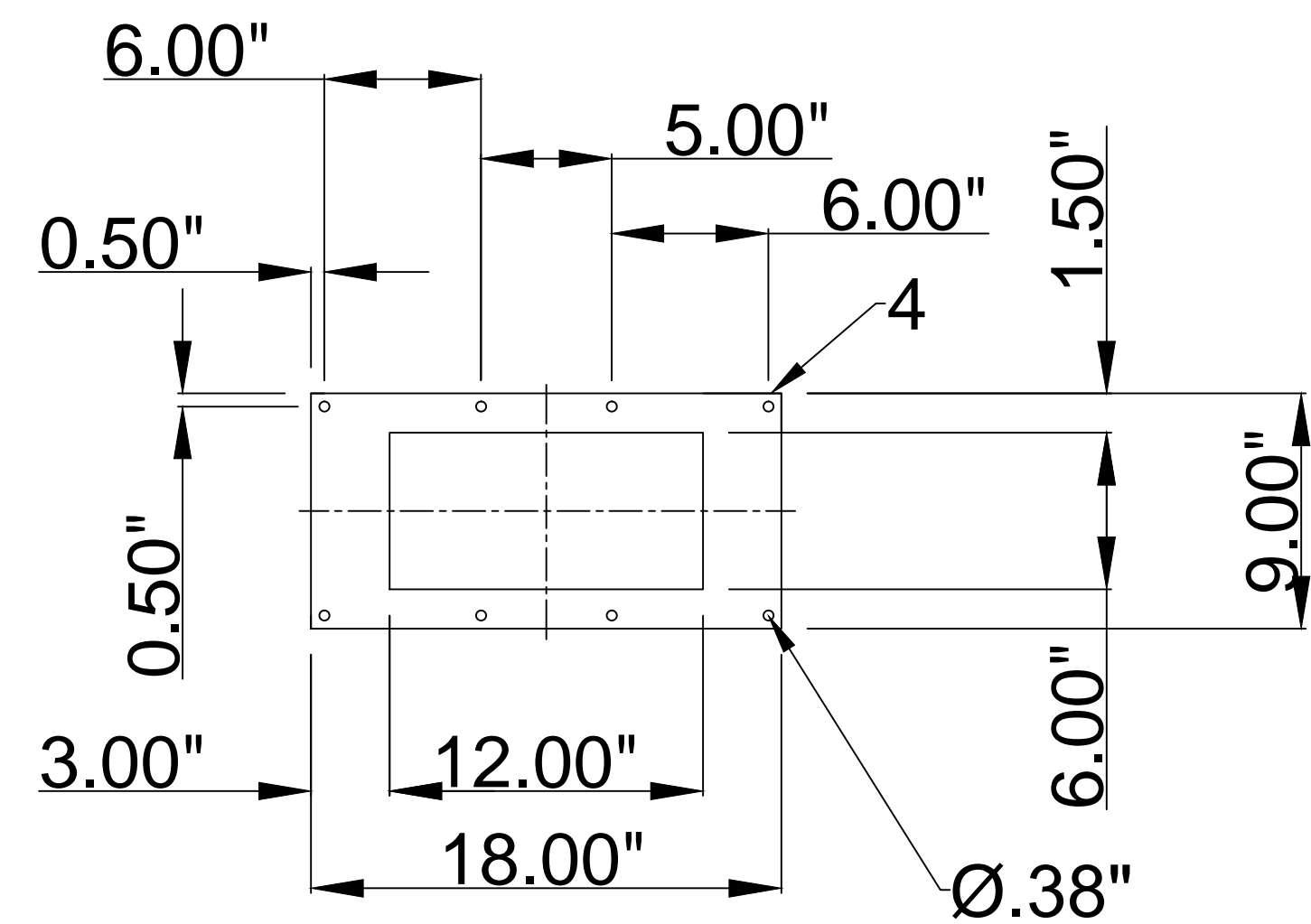


SIDE VIEW

3 - CUT TO LENGTH, AND CUT RECTANGULAR OPENING IN BOTTOM



FRONT VIEW



FLANGE DETAIL

- NOTES:
- PARTS SHALL BE GALVANIZED FINISH.
  - PART SHALL BE MARKED WITH NON-DESTRUCTIVE TAG WITH THE FOLLOWING IDENTIFICATION: " 0000-GCI-0612"

Avani Environmental Intl. Inc.  
95 Cypress Drive  
Youngsville, NC 27596  
P# 919-488-2862 F# 919-488-2863

Avani

Project: BURKS		
Drawing: RECT. TO ROUND DUCT ADAPTOR		
Date: 11/2/2012	Drawn by: J.T.L	
Sheet No: 1 OF 1	Scale: FULL	A