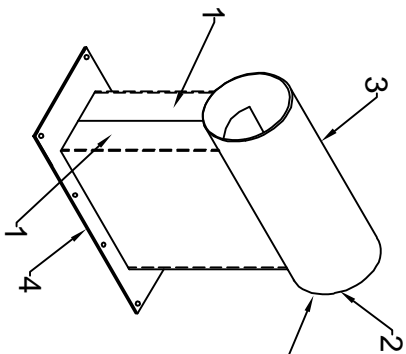
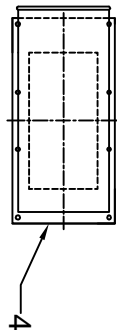


ONE - RECT TO ROUND ADAPTER CUT LIST - "MK."0000-GCI-6012"					
ITEM NO.	QTY.	DESCRIPTION	LENGTH	WEIGHT LBS.	MATERIAL
1	2	20 GA. SHEET		0.3000	A569
2	1	20 GA. SHT. 7.93 DIA.		0.1000	A569
3	1	K&B 20 GA QF 8" PIPE (P/N 10008, STD LENGTH 59.06")	CUT TO LENGTH	0.5000	PLN.STL
4	1	SHT. 14 X 9.00	18.0000	0.6000	A569

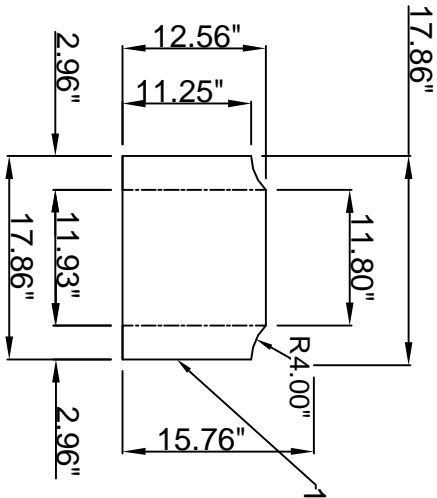


DIE-FORMED, ROLLED EDGE WHICH IS USED FOR CLAMP - TOGETHER CONNECTION JOINED BY A SINGLE LEVER CLAMP.

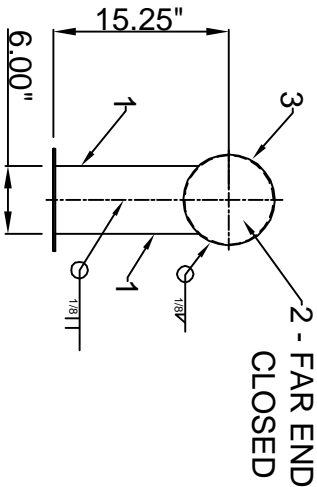
CABINET VIEW



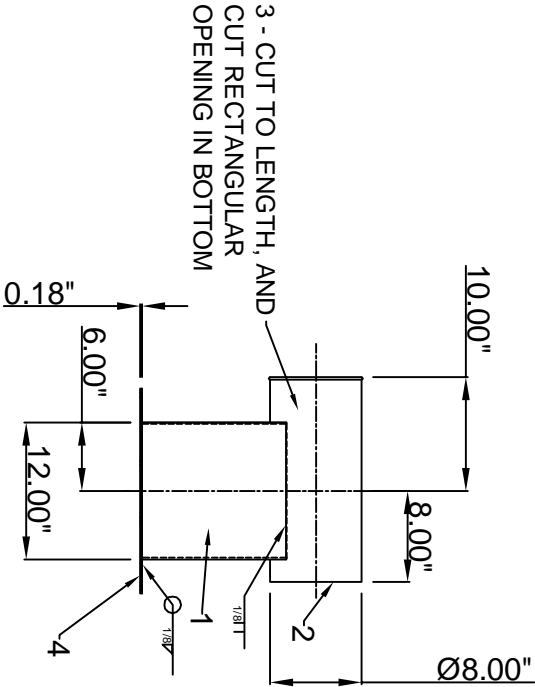
TOP VIEW



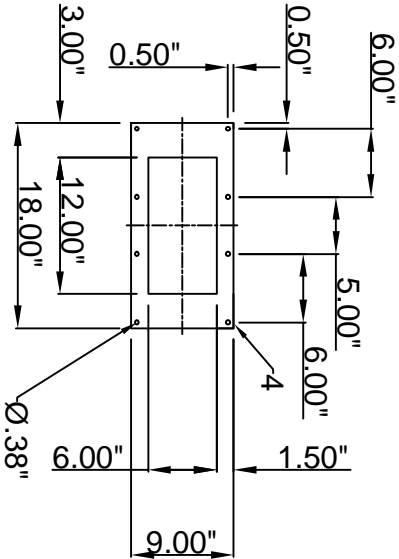
FOLD DETAIL



SIDE VIEW



FRONT VIEW



FLANGE DETAIL

NOTES:

1. PARTS SHALL BE GALVANIZED FINISH.
2. PART SHALL BE MARKED WITH NON-DESTRUCTIVE TAG WITH THE FOLLOWING IDENTIFICATION: "0000-GCI-0612"

Avani Environmental Int'l., Inc.

95 Cypress Drive

Youngsville, NC 27596

PH 919-488-2862 FX 919-488-2863

Avani

Project: BURKS

Drawing: RECT. TO ROUND DUCT ADAPTOR

Date: 11/2/2012 Drawn by: J.T.L

Sheet No: 1 OF 1 Scale: FULL

A

This document was created with Win2PDF available at <http://www.win2pdf.com>.
The unregistered version of Win2PDF is for evaluation or non-commercial use only.
This page will not be added after purchasing Win2PDF.