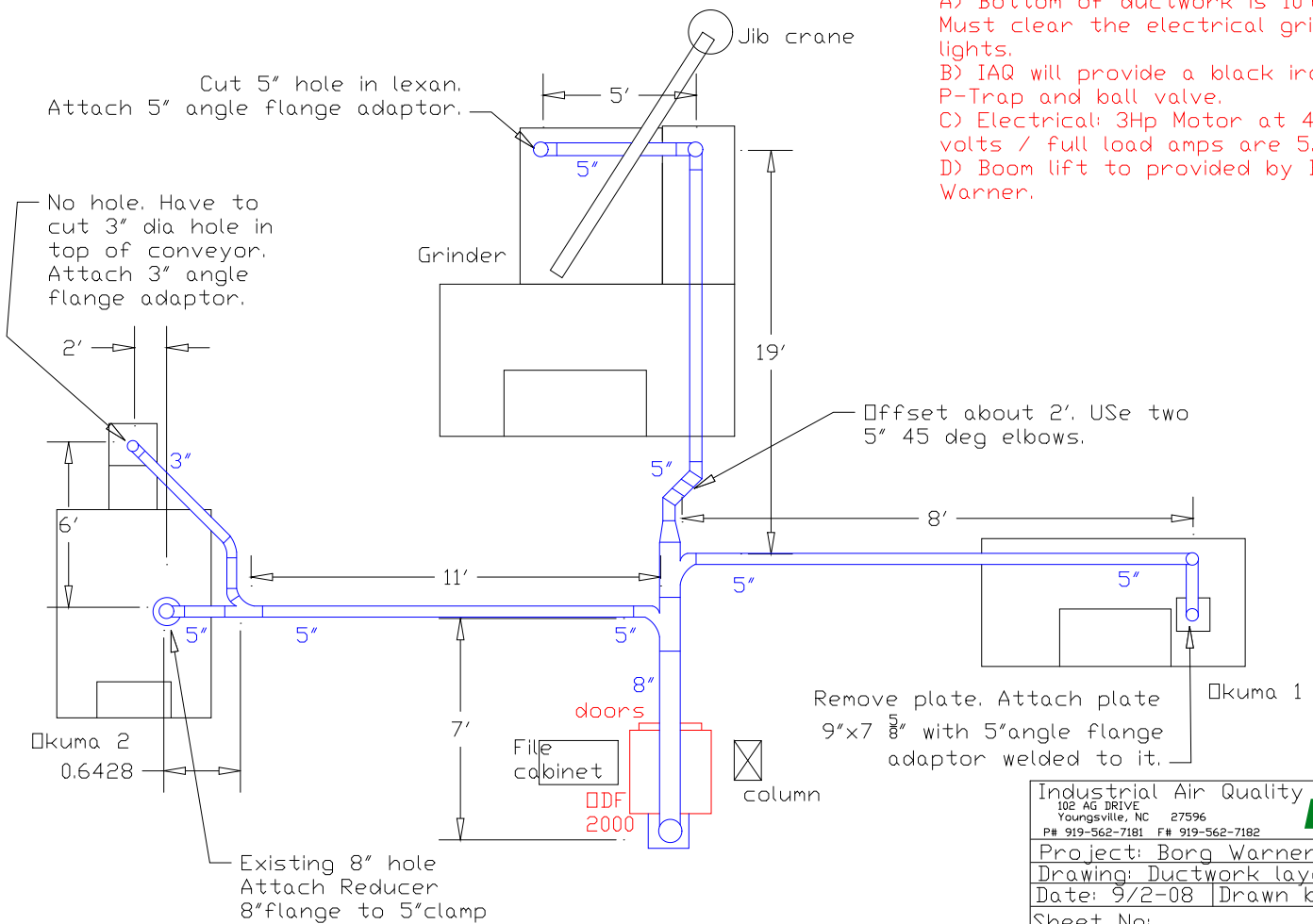


# Ductwork Layour for ODF 2000

## Plan View

**Notes:**

- A) Bottom of ductwork is 10'6". Must clear the electrical grid and lights.
- B) IAQ will provide a black iron P-Trap and ball valve.
- C) Electrical: 3Hp Motor at 460 volts / full load amps are 5.2
- D) Boom lift to provided by Borg Warner.



Industrial Air Quality		<b>IAQ</b>
102 AG DRIVE Youngsville, NC 27596		
P# 919-562-7181 F# 919-562-7182		
Project: Borg Warner		
Drawing: Ductwork layout		
Date: 9/2-08		Drawn by: RAV
Sheet No:		