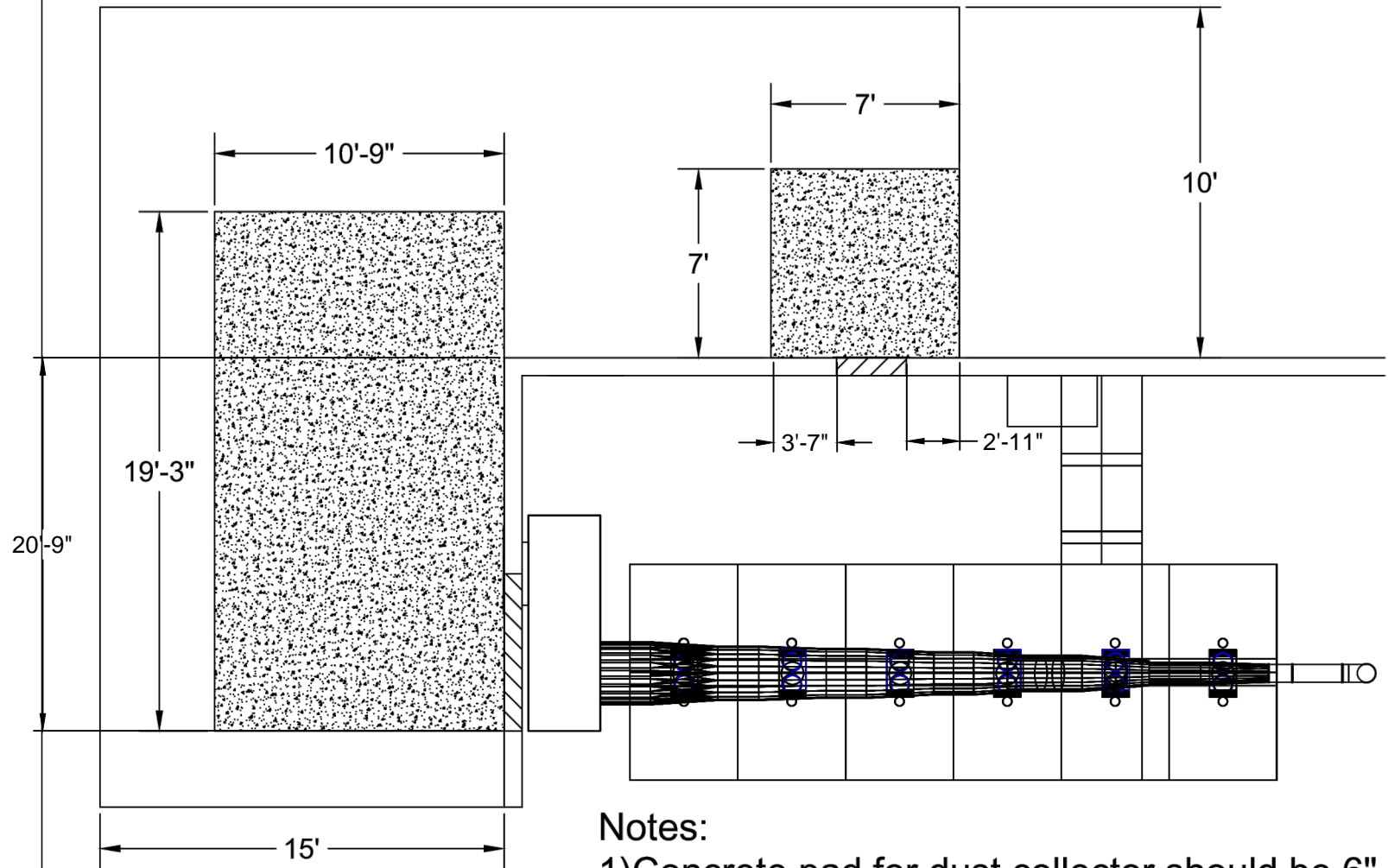


Plan View



Notes:

- 1) Concrete pad for dust collector should be 6"
- 2) Concrete pad for fan should be 4"

| | | |
|--|--|------------------------|
| <small>Avani Environmental, Inc. 88 Ogden Drive Vancouver, BC V7V 2R8 PH 604-270-2882 FX 604-270-2883</small> | | |
| Project: Boilermakers Spokane Local 242 Drawing: Concrete Pad Date: 4/23/15 Sheet No: | | |
| | | Drawn by: DJT Rev A |