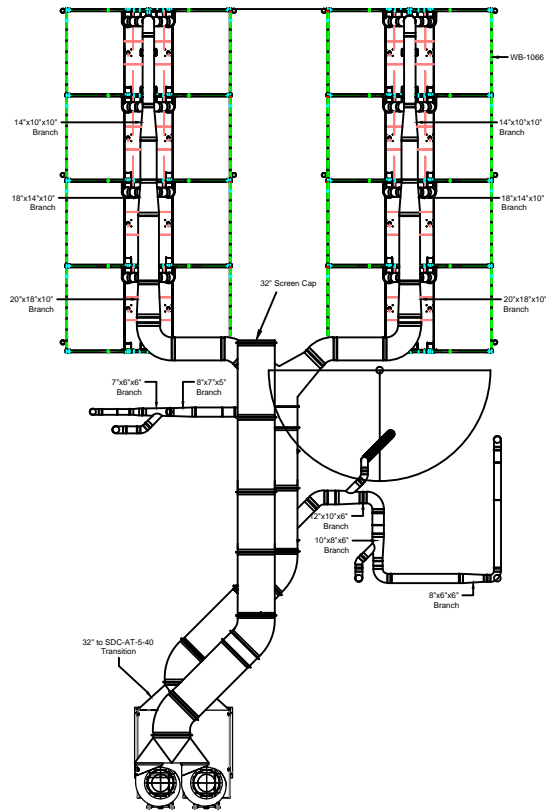
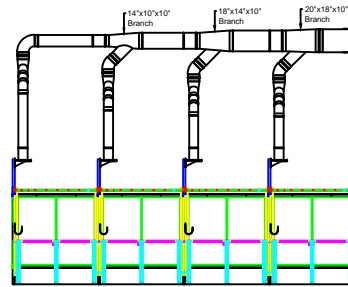


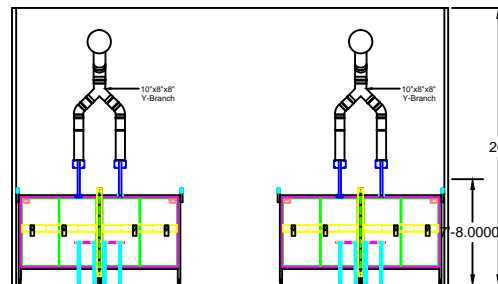
# Local 92 Duct Layout



Plan View



Side View



Front View

Notes:

1. Demo of previous system
2. Support to be fabricated for SDC-AT-5-40
3. Duct to be hung from ceiling
4. Side mounted fans
5. Avani Environmental standard installation crew is quoted out per day based on the above drawings and approvals. Any changes, modifications, downtime, or inability to perform our work above and beyond the control of Avani Environmental will charge an additional \$1,000 per work day (5 or more hours) per crew above what was initially quoted.

PRELIMINARY

This product has not been tested for seismic calculations.

SO#22345

Avani Environmental Intl.  
95 Cypress Drive  
Youngsville, NC 27596  
P# 919-570-2862 F# 919-570-2863

**Avani**

Project: Local 92

Drawing:

Date: 3/12/15

Drawn by: DJT

Sheet No.: 1

Rev.: 2