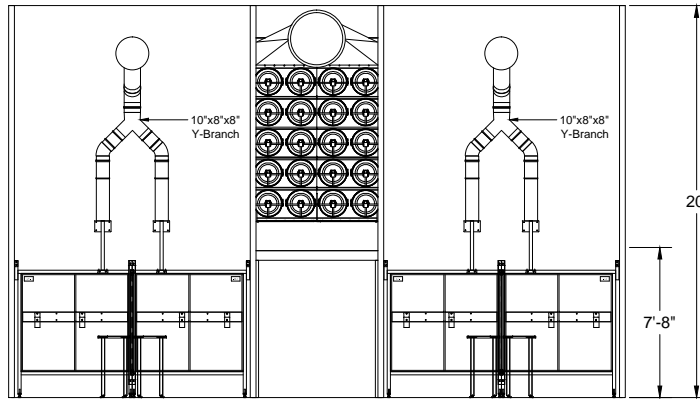
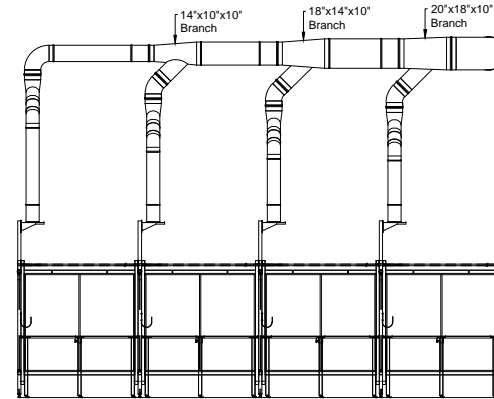


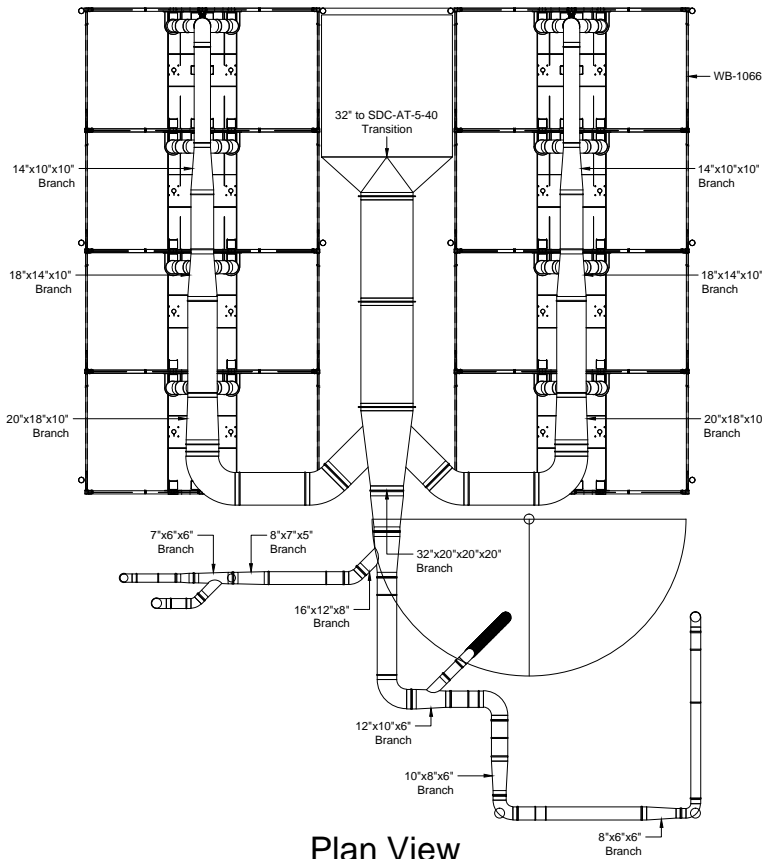
Local 92 Duct Layout



Front View



Side View



Plan View

Notes:

1. Demo of previous system
2. Support to be fabricated for SDC-AT-5-40
3. Duct to be hung from ceiling
4. Side mounted fans
5. Avani Environmental standard installation crew is quoted out per day based on the above drawings and approvals. Any changes, modifications, downtime, or inability to perform our work above and beyond the control of Avani Environmental will charge an additional \$1,000 per work day (5 or more hours) per crew above what was initially quoted.

Avani Environmental Intl. Inc.
 95 Cypress Drive
 Youngsville, NC 27596
 P# 919-570-2862 F# 919-570-2863

Avani

Project: Boilermakers Spokane Local 92
Drawing: Duct Layout

Date: 10/23/14

Drawn by: MDT

Sheet No:

Rev 0