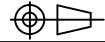
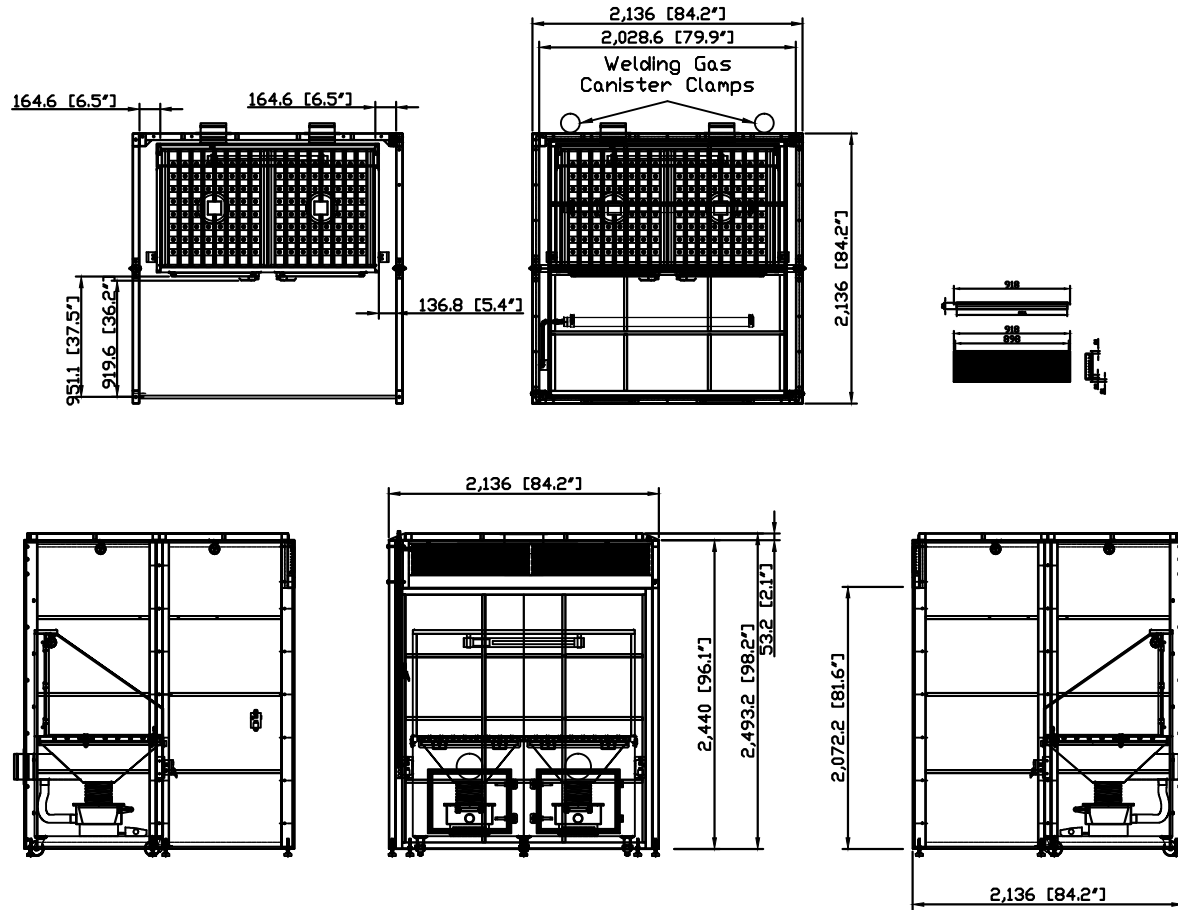


DO NOT SCALE

IF IN DOUBT ASK



| Revisions | | | |
|-----------|-------------|------|----------|
| Rev | Description | Date | Approved |



WB-7078G w/SDT-81 GRINDING BOOTH w/Downdraft table
SPECIFICATIONS

- Top Panel Dimensions: 84.2" x 84.2" x 2.1"
- Side Panel Dimensions: (2) 84.2" x 96.1"
- Working Lights: (2) Explosion Proof Lights (110V, Single Phase, 60 Hz, 20W)
- Support Structure: 1 1/2" x 4" steel stock welded
- Panel Construction: 12-gauge welded steel single wall with cross and up bracing
- Powder Coated: Avani Safety Blue Standard (custom colors available)
- Four Piece Configuration: (2) side panels, (1) back panel, (1) Top hood
- Booths can be mounted back-to-back, side-to-side or both options
- Electrical Outlets: (2) 110V Outlets @ (1) Switch (additional single or three phase outlets available)
- Light Switch: For overhead lights
- Compressed Air Connection
- CO2 or Gas Connection: (additional gas lines or compressed lines available)

OPTIONS

- Welded Nuts: Optional locations for J-Hooks
- Welding Nuts: For wire feeder or welder bracket
- Adjustable Rear Shelf (solid, grated or cutting table)
- Corner Shelves
- Viewing Windows
- Custom Welding Brackets
- Foot Lockers
- Fixtures, Lazy Suzans
- Any option that can fit inside the booth or on the booth

AVANI ENVIRONMENTAL INTL. INC. Sales Department
95 Cypress Drive
Youngsville, NC 27596
(919) 570-2862
info@avanienvironmental.com

| | | | | | | | | |
|--|------------|------|-----|--------------|-------|---|--------|--------------------------|
| Drawn by: | 2014.07.14 | Name | *** | Part Number: | Bloom | Title: WB-7X7X8 with Curtain(Bloom) w/SDT-81 | | |
| Checked by: | | | | | | Size | Scale | Drawing Number: |
| The drawings, AutoCAD, 3-D Models, and specifications are the property of Avani Environmental Intl. Inc. (AE) and may not be reproduced, distributed, modified, or otherwise used, except provided herein, without the express written permission of AE. | | | | | | C | 1 = 35 | WB-7-7P-G (Bloom) |