

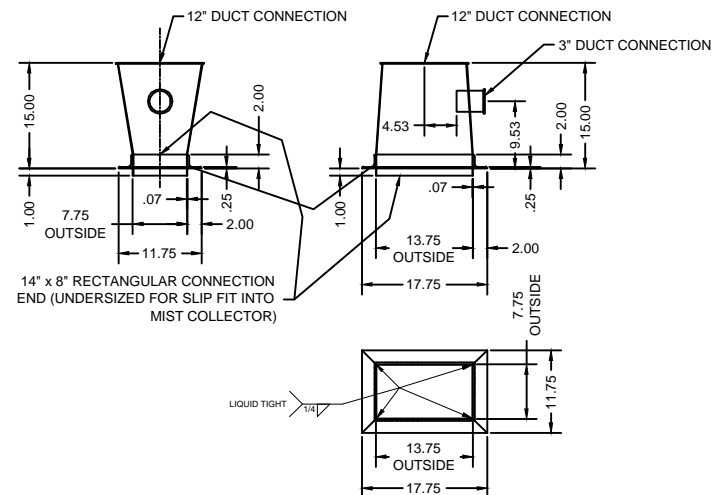
DO NOT SCALE DRAWING

1000 GPM MIST COLLECTION SYSTEM cont.

#	DUCT PART	QUANTITY
1	12" 1000mm SLIP TUBE	1
2	12" 1000mm TUBE	1
3	12" 200mm TUBE	1
4	12" 90° ELBOW	1
5	12" 45° ELBOW	1
6	CONICAL LATERAL, 12" x 9" x 9"	1
7	CONE, 9" x 8"	2
8	8" 60° ELBOW	1
9	8" 200mm TUBE	2
10	8" HOSE CONNECTION	1
11	8" 2000mm TUBE	1
12	8" 1000mm SLIP TUBE	1
13	8" 90° ELBOW	1
14	8" 500mm SLIP TUBE	1
15	8" 500mm TUBE	1
16	CONICAL LATERAL, 8" x 6" x 6"	1
17	CAP, 6"	1
18	6" 60° ELBOW	1
19	6" 1000mm SLIP TUBE	1
20	6" 1000mm TUBE	1
21	6" HOSE CONNECTION	1
22	HOSE, Ø6", FLEX, CLEAR, 36" LG.	24"
23	HOSE, Ø8", FLEX, CLEAR, 36" LG.	24"

1000 GPM MIST COLLECTION SYSTEM cont.

#	DUCT PART	QUANTITY
24	PULL RING CLAMP, 12"	6
25	U-SHAPE GASKET, 12"	8
26	O-RING GASKET 12"	3
27	PULL RING CLAMP, 9"	2
28	U-SHAPE GASKET, 9"	4
29	PULL RING CLAMP, 8"	10
30	U-SHAPE GASKET, 8"	12
31	O-RING GASKET 8"	4
32	WORM GEAR CLAMP 8"	2
33	PULL RING CLAMP, 6"	5
34	U-SHAPE GASKET, 6"	6
35	O-RING GASKET 6"	2
36	WORM GEAR CLAMP 6"	2
37	PULL RING CLAMP, 3"	7
38	U-SHAPE GASKET, 3"	9
39	ADAPTER TRANSITION, 8" x 14" to Ø12"	1
40	3" 200mm TUBE	3
41	3" 90° ELBOW	3
42	3" 200mm SLIP TUBE	1
43		
44		
45		
46		



**DETAIL A**

ADAPTER TRANSITION FROM COLLECTOR

Need  
6" End Plate - 6.5"OD (165mm)

\*\*\* SEE SHEET #2 FOR PARTS LAYOUT \*\*\*

**LEGEND**

- SEE DRAWING BILL OF MATERIAL
- SEE REFERENCE BILL OF MATERIAL
- REVISIONS

<p>1 DECIMAL = ±0.00 INCH                  2 DECIMAL = ±0.01 INCH                  3 DECIMAL = ±0.015 INCH                  ALL SURFACES TO BE FREE OF BENDS                  TWISTS OR WARPAGE IN EXCESS OF                  .005 INCH PER 4 FEET                  REMOVE ALL SHARP EDGES, WELD                  SPATTERS AND OBSTRUCTIVE WELD BEADS</p>				<p>SCALE                  1 : 8</p>	<p><b>BARNES</b>                  ROCKFORD, ILLINOIS 61105                  (815) 964-8661</p>	<p>TITLE                  G1000 MIST                  COLLECTION                  DUCTING</p>
<p>SYM REVISIONS DATE BY</p>	<p>DATE                  11/14/14</p>	<p>ORDER NO. 79.80095.1001</p>	<p>SHEET 1 OF 2</p>			

CUSTOMER