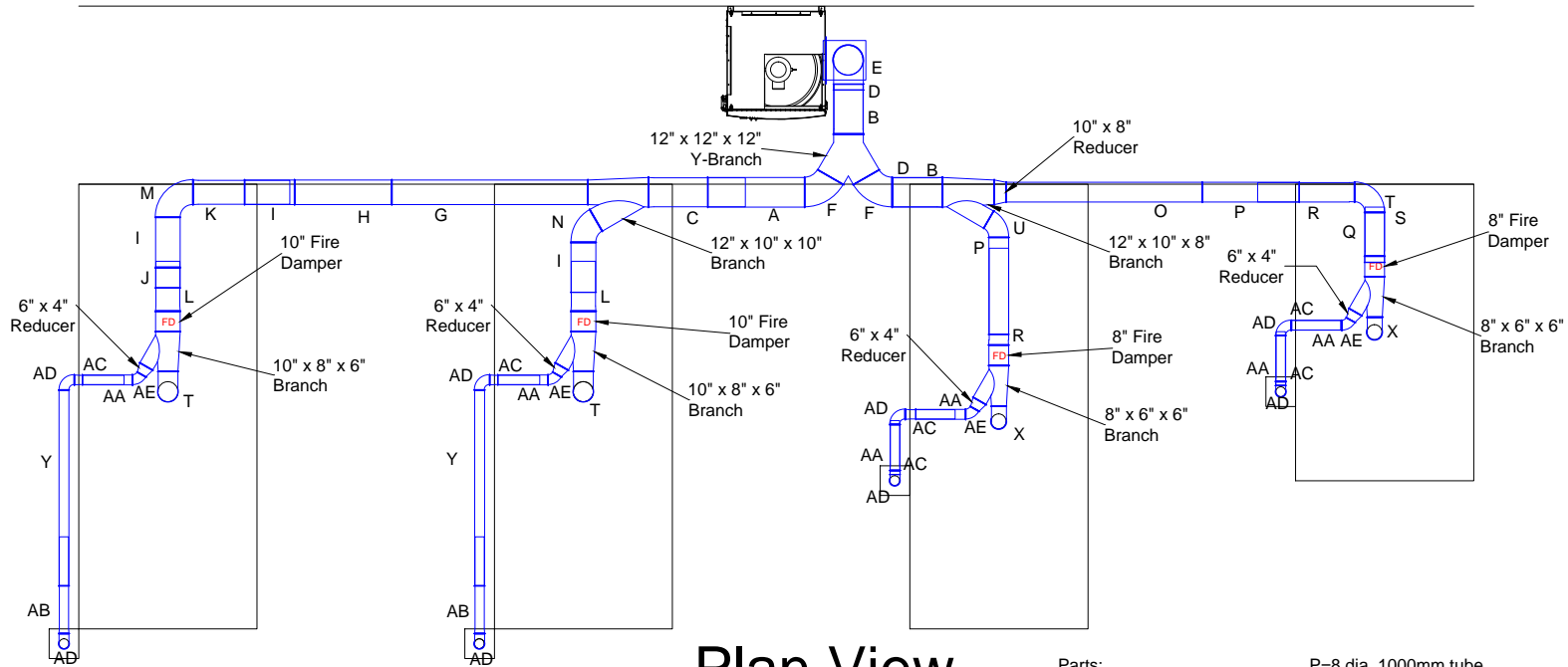
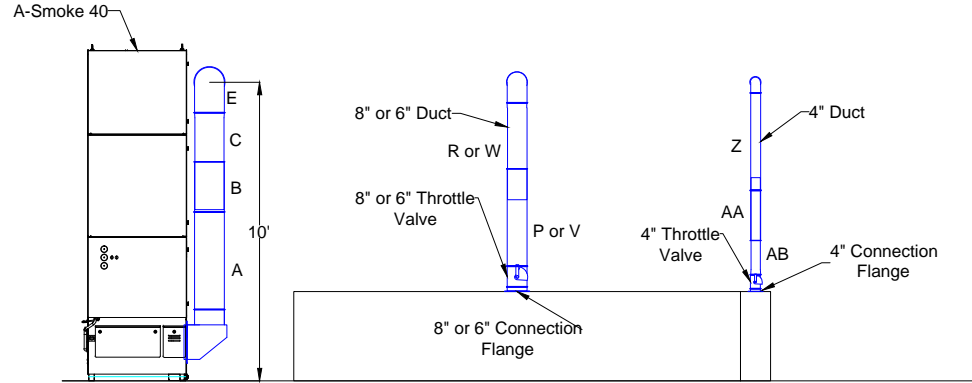


BAE SO#20348 Duct Layout



Plan View

- Parts:
- A=12" dia. 1000mm tube
 - B=12" dia. 500mm tube
 - C=12" dia. 1000mm slip tube
 - D=12" dia. 500mm slip tube
 - E=12" dia. 90 deg elbow
 - F=12" dia. 60 deg elbow
 - G=10" dia. 2000mm tube
 - H=10" dia. 1000mm tube
 - I=10" dia. 500mm tube
 - J=10" dia. 200mm tube
 - K=10" dia. 1000mm slip tube
 - L=10" dia. 500mm slip tube
 - M=10" dia. 90 deg elbow
 - N=10" dia. 60 deg elbow
 - O=8 dia. 2000mm tube
 - P=8 dia. 1000mm tube
 - Q=8 dia. 500mm tube
 - R=8 dia. 1000mm slip tube
 - S=8 dia. 500mm slip tube
 - T=8" dia. 90 deg elbow
 - U=8" dia. 60 deg elbow
 - V=6" dia. 1000mm tube
 - W=6" dia. 1000mm slip tube
 - AA=4" dia. 500mm tube
 - AB=4" dia. 1000mm slip tube
 - AC=4" dia. 500mm slip tube
 - AD=4" dia. 90 deg elbow
 - AE=4" dia. 60 deg elbow



Elevation View

Avani Environmental Intl.
95 Cypress Drive
Youngsville, NC 27596
P# 919-570-2862 F# 919-570-2863



Project: BAE	
Drawing: Duct Layout	
Date: 9/4/2013	Drawn by: MDT
Sheet No: 1 of 1	Rev.: 0