

SDC-28500 (SV-6000) Assembly Procedures

A. 【Lower Base】 Stand:



【1】 Disassemble the cardboard and bubble wrapper from the Stand.



【2】 Machine Body – Lower Section.



Disassemble (6) Trays under the Stands.



【3】 Apply grease on (6) Stands.



【4】Apply grease on the Stands.



【5】Insert the Machine Lower Section into the (3) Stands.



【6】 After insertion, fasten (12) pcs of 1/2''*1-1/4'' Hex Screws, (24) pcs of 1/2''*OD23*2t Flat Washers, (12) pcs of Spring Washers and 1/2'' Hex Nuts at the six locations.

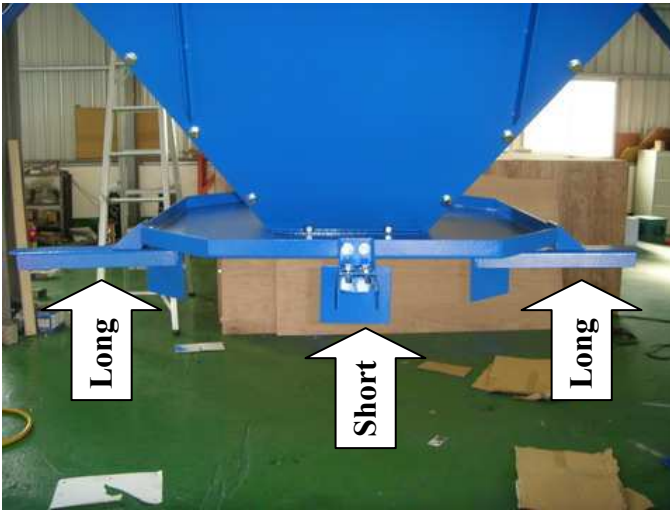


【7】 Disassemble the Bubble Wrapper from the Supporting Shaft.



【8】 Fasten each Supporting Shaft with (4) pcs of 1/2''*1-1/4'' Hex Screws, (8) pcs of 1/2''*OD25*2t Flat Washers, (4) pcs of 1/2'' Spring Washers and (4) pcs of 1/2'' Hex Nut. Fix the Supporting Shafts under the Machine Lower Section, above the Stands. There are a total of (8) Supporting Shafts.

B. Drum Base:



- 【1】** Fix the (3) Gallon Drums to the L-shape Frame using (2) pcs of 3/8”*3/4” Hex Screw and (4) pcs of 3/8”*OD23*2t Flat Washers and (2) pcs of 3/8” Hex Nut.

Pay attention to the Directions when fixing.

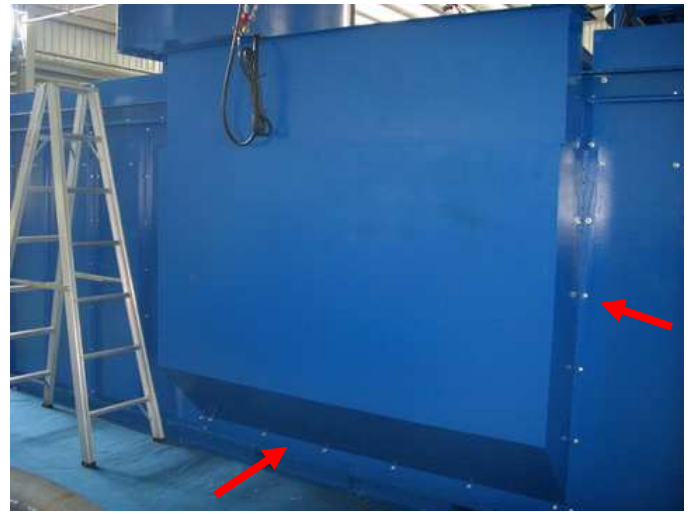


- 【2】** Position the Gallon Drum to the Drum Base
【3】 Adjust the Drum Fixing Base and push the Gallon Drum to fix the position.
【4】 Gallon Drum Base is able to adjust its height.

C. 【Machine Body】 Inlet Base:



【1】 Assemble the Inlet Base to the back of Machine Body.

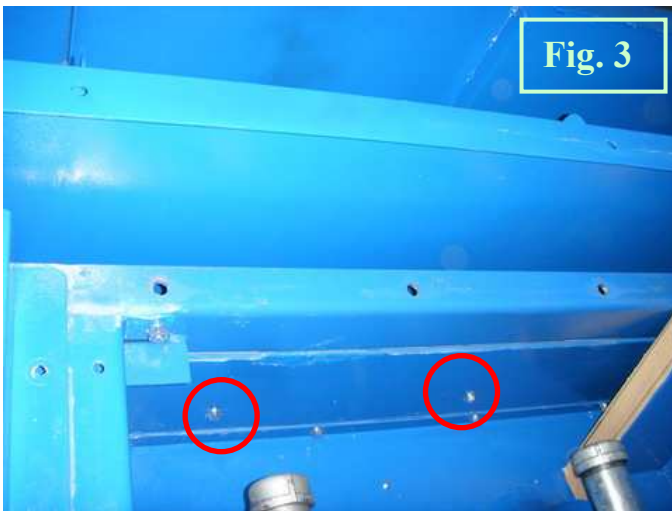
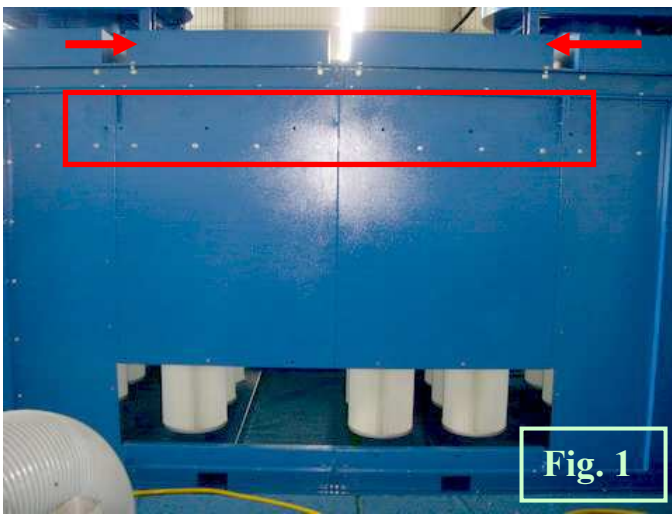


【2】 Hang the Inlet and fix the surrounding parts with (16) pcs of 3/8”*1” Hex Screw, (32) pcs of 3/8”*OD23*2t Flat Washer, (16) pcs of 3/8” Spring Washer and (16) pcs of 3/8” Hex Nut to the Machine Body.



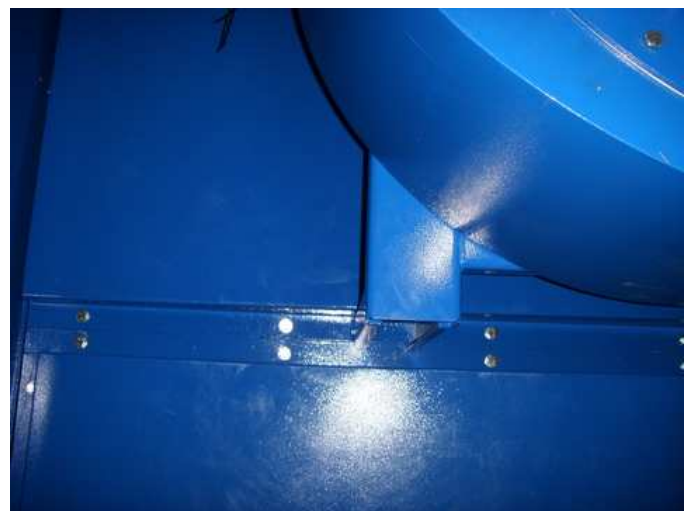
【3】 Open the door in the middle of the Machine Body and take out the Cartridges.

【4】 Use (12) pcs of 3/8”*1” Hex Screw, (24) pcs of 3/8”*OD23*2t Flat Washer, (12) pcs of 3/8” Spring Washer and (12) pcs of 3/8” Hex Nuts to fix the lower section of Inlet Base to the Machine Body. Then put the Cartridges back to the Machine Body.



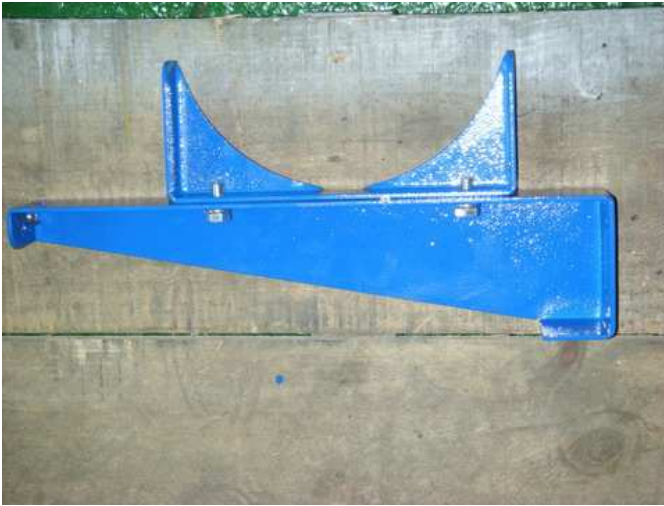
【5】 If fastening the 8 positions for the Inlet Base (Fig. 1), it is required to open the two roofs at the top (Fig. 2)

【6】 (Fig. 3) & (Fig. 4) Use (8) pcs of 3/8"×1" Hex Screw, (16) pcs of 3/8"×OD23×2t Flat Washer, (8) pcs of 3/8" Spring Washer and (8) pcs of 3/8" Hex Nut from inside to outside of the Machine Body and fix with the Inlet Base.



【7】 Use (20) pcs of 1/2"×3/4" Hex Screw and (20) pcs of 1/2"×OD25×2t Flat Washers to fix the (2) pcs roofs to the Machine Body.

D. 【Machine Body】 Air Pulse-Jet Fixing Frame:



- 【1】** Fix six Pulse-jet Fixing Frame using (2) pcs of 1/2"*1-1/4" Hex Screw, (4) pcs of 1/2"*OD25*2t Flat Washer, (2) pcs of 1/2" Spring Washer and (2) pcs of 1/2" Hex Nut to the Upper raw of Machine Body.

REMARK: Fasten the screws from inside to outside of the Machine Body.

E. 【Machine Body】 Air Pulse-Jet Assembly:



- 【1】 Disassemble the Box and tear the Bubble Wrapper of the Air Pulse Jet.
Take out the Air Pulse-Jet, Water Filtering Device, Water Releasing Valve and Black Gasket Ring.

There is a hole below for use of Releasing the Water Valve.

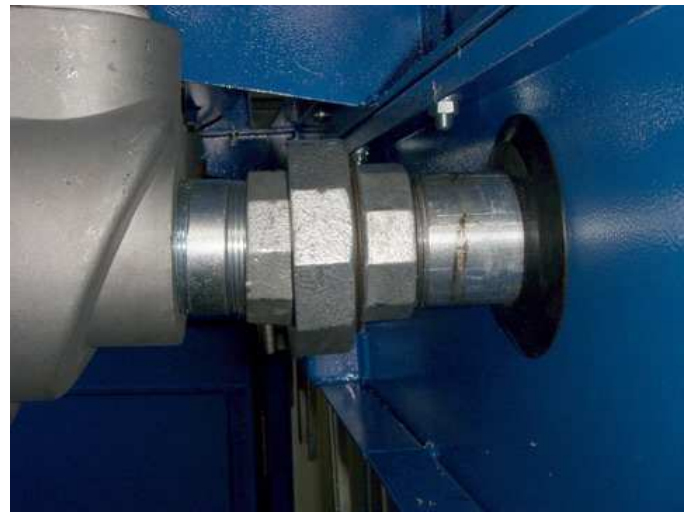
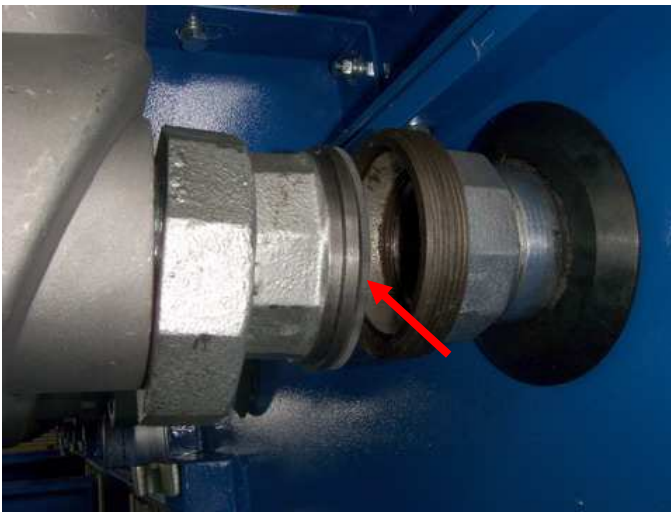


There is a hole for the Water Filtering Device.

- 【2】 Fix the Air Pulse-Jet on the Pulse-Jet Fixing Drum.
Pay attention to the direction of the Air Pulse-Jet.



- 【3】 Note that the direction of the Magnetic Valve for the Air Pulse Jet points towards inside.

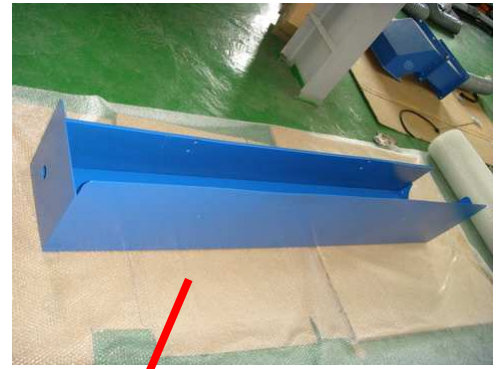
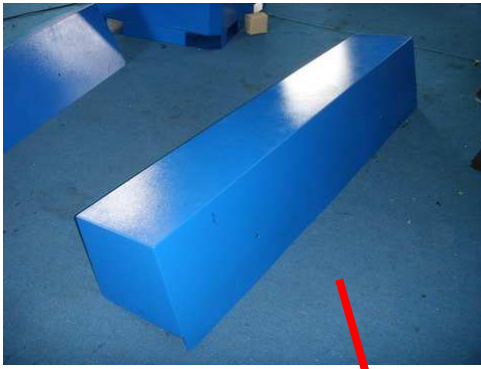


- 【3】 Put the black gasket on the 2” Connector on the Magnetic Valve.
- 【4】 Then fasten the screws of the 2” Connector and the 2” Steel Pipe.



- 【5】 Fix the Water Releasing Valve on the Air Pulse-Jet with 1” Steel Pipe.

F. 【Machine Body】 Air Pulse-Jet Cover:

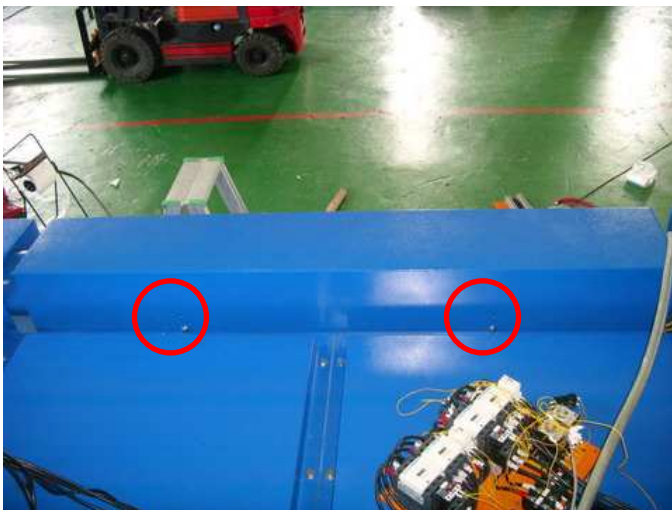


【1】 There are three types of Air Pulse-Jet Cover:

Refer to the figures above: Left Cover is sealed *without* holes on the surface.

Middle Cover is labeled with OSKAR LOGO.

Right Cover is sealed *with* holes on the surface.



【2】 Each Air Pulse-Jet Cover back side will be fixed with (2) pcs of 3/8”*3/4” Hex Screw and (2) pcs of 3/8”*OD23*2t Flat Washer to the Air Pulse-Jet Fixing Base. (Fig. 5)

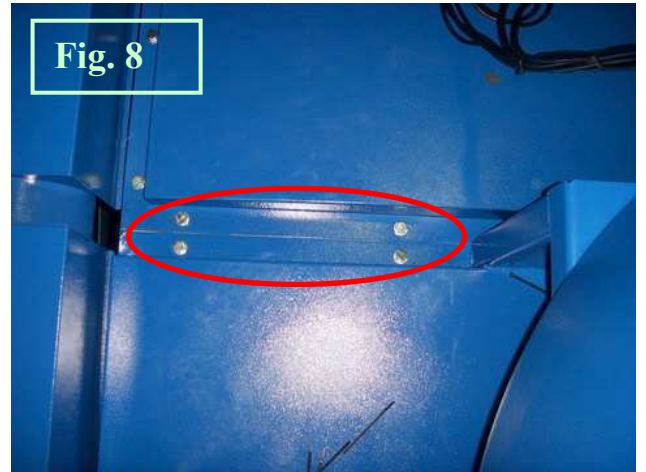


【3】 Each Air Pulse-Jet Cover front side will be fixed with (2) pcs of 3/8”*3/4” Hex Screw and (2) pcs of 3/8”*OD23*2t Flat Washer to the Air Pulse-Jet Fixing Base. (Fig. 6).



【4】 Use 1” Connector to put through the Water Filtering Device to the Air Pulse-jet Cover and fasten it at the hole on the right side.

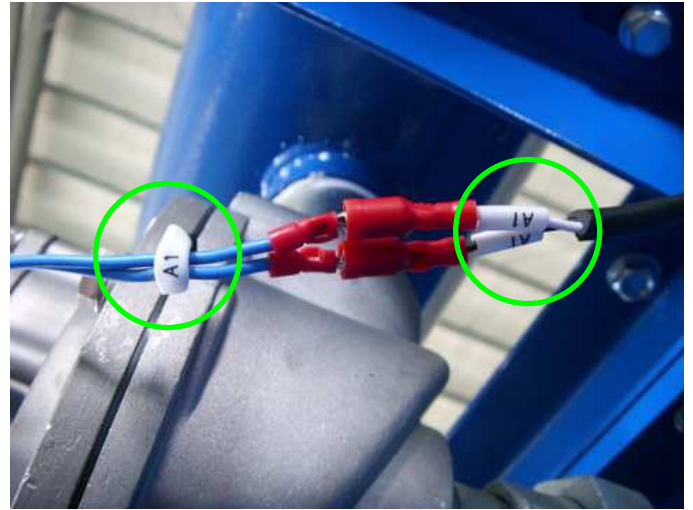
G. 【Machine Body】 Blower Section:



【5】〔 Fig. 7 〕 Assembly positions for the (2) Blower Sections.

【6】〔 Fig. 8 〕 Use (24) pcs of 1/2”*3/4” Hex Screw and (24) pcs of 1/2”*OD25*2t Flat Washers to fix the Blower Section to the Machine Body.

H. 【Machine Body】 Magnetic Valve Wiring:



- 【1】 Plug in the Power Cords according to the Cord Numbers marked on the Magnetic Valve (from left to right) A1~A12.

I. 【Machine Body】 Motor Wiring:



【1】 Connect the Power Cords from the (2) Blower Sections to the Control Box on the Right Side of the Machine Body. [Fig. 9]



【2】 Open the Control Box, connect the (2) power cords through the (2) holes under the Box.

【3】 Use a Screwdriver to fix the Power Cords to the receptacles.