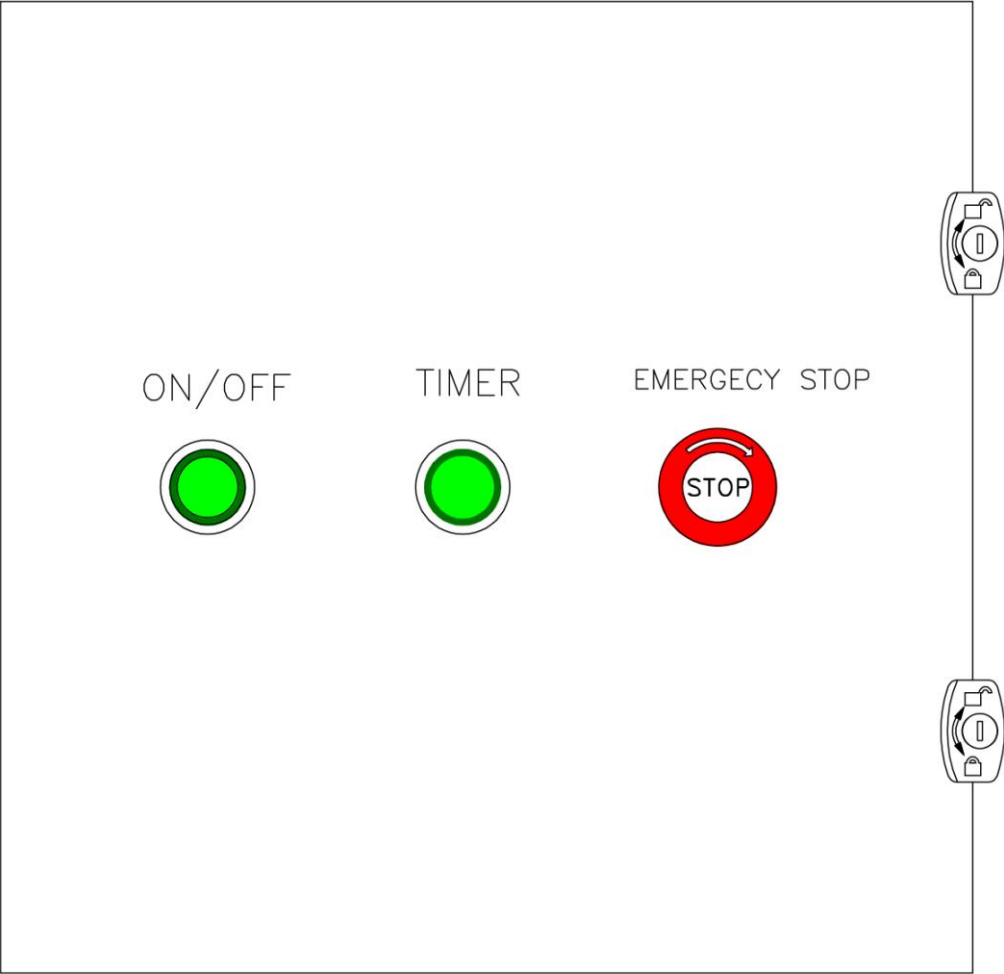
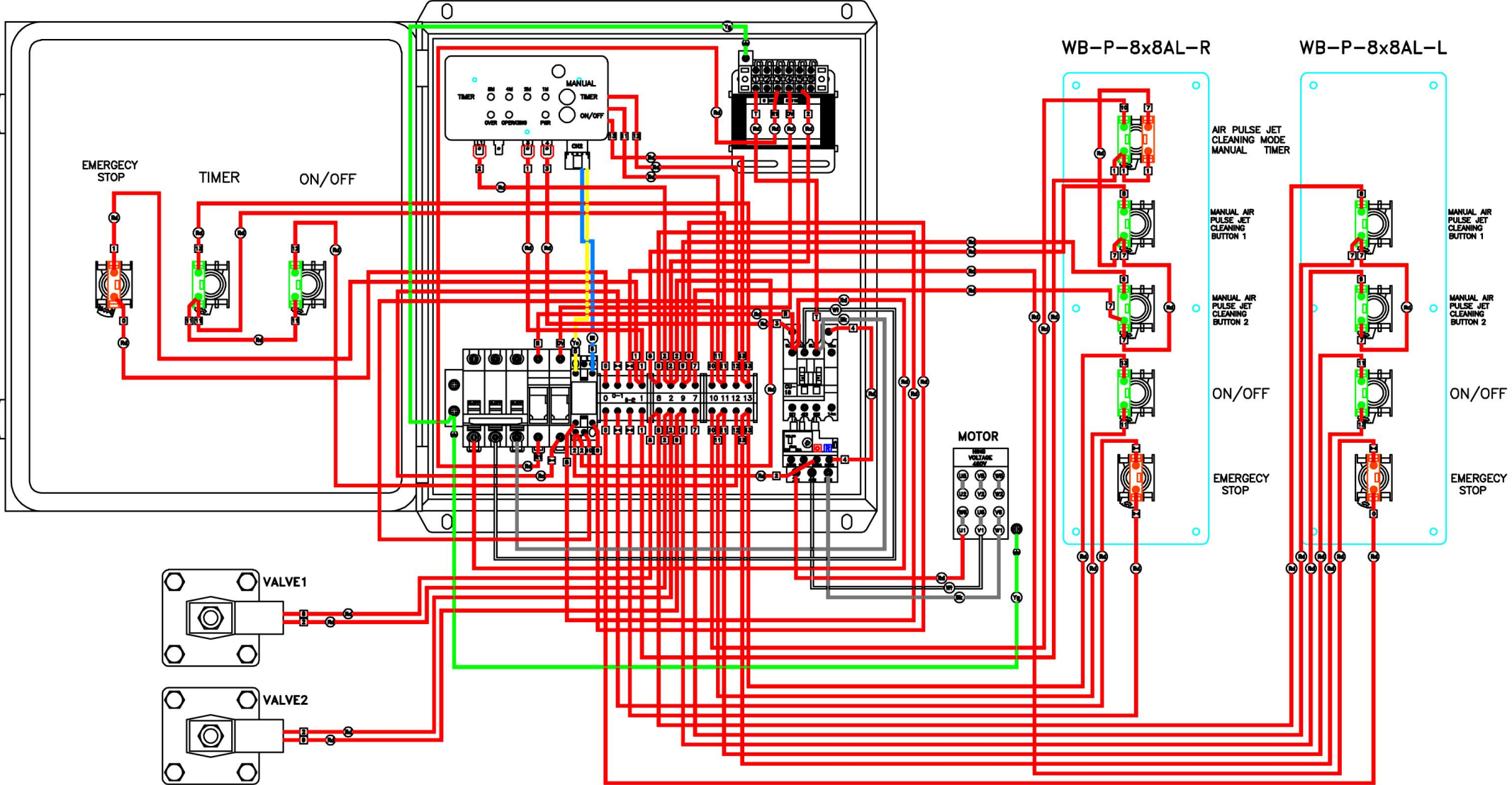


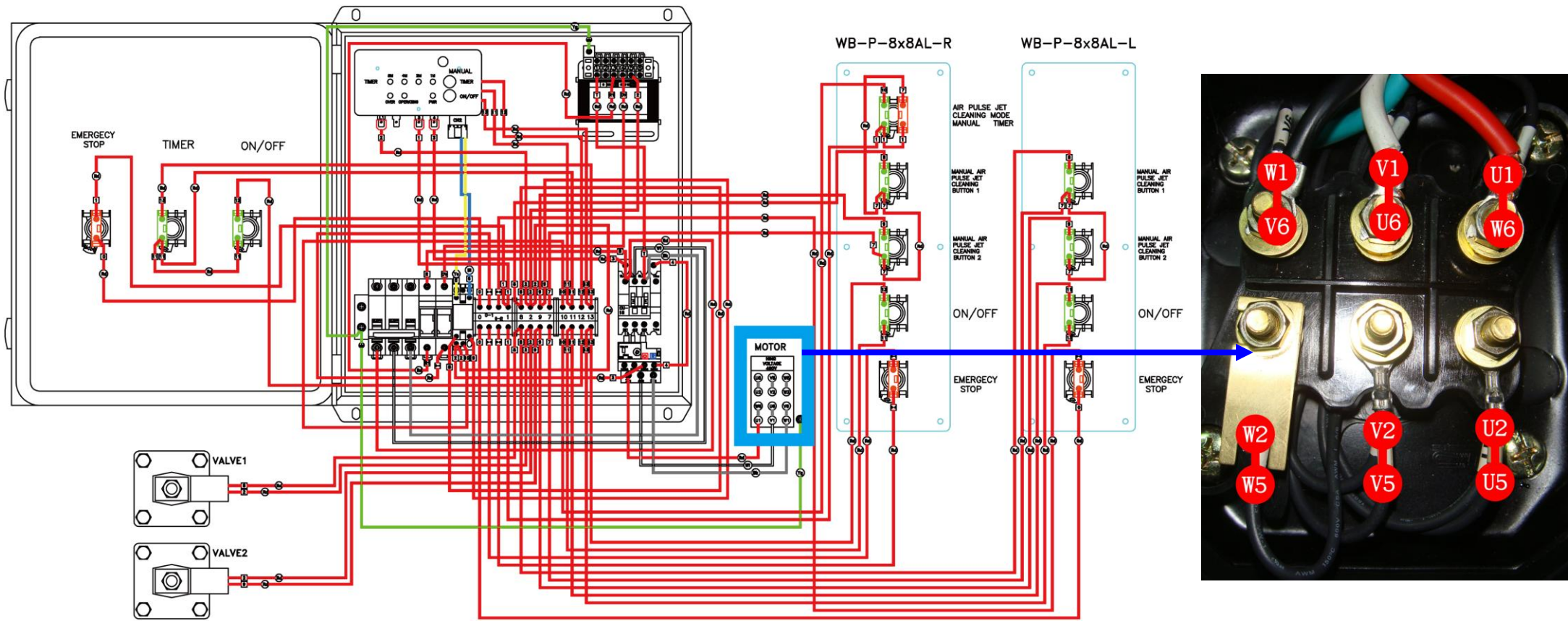
Main Electrical Box Wiring For TMC-10-8



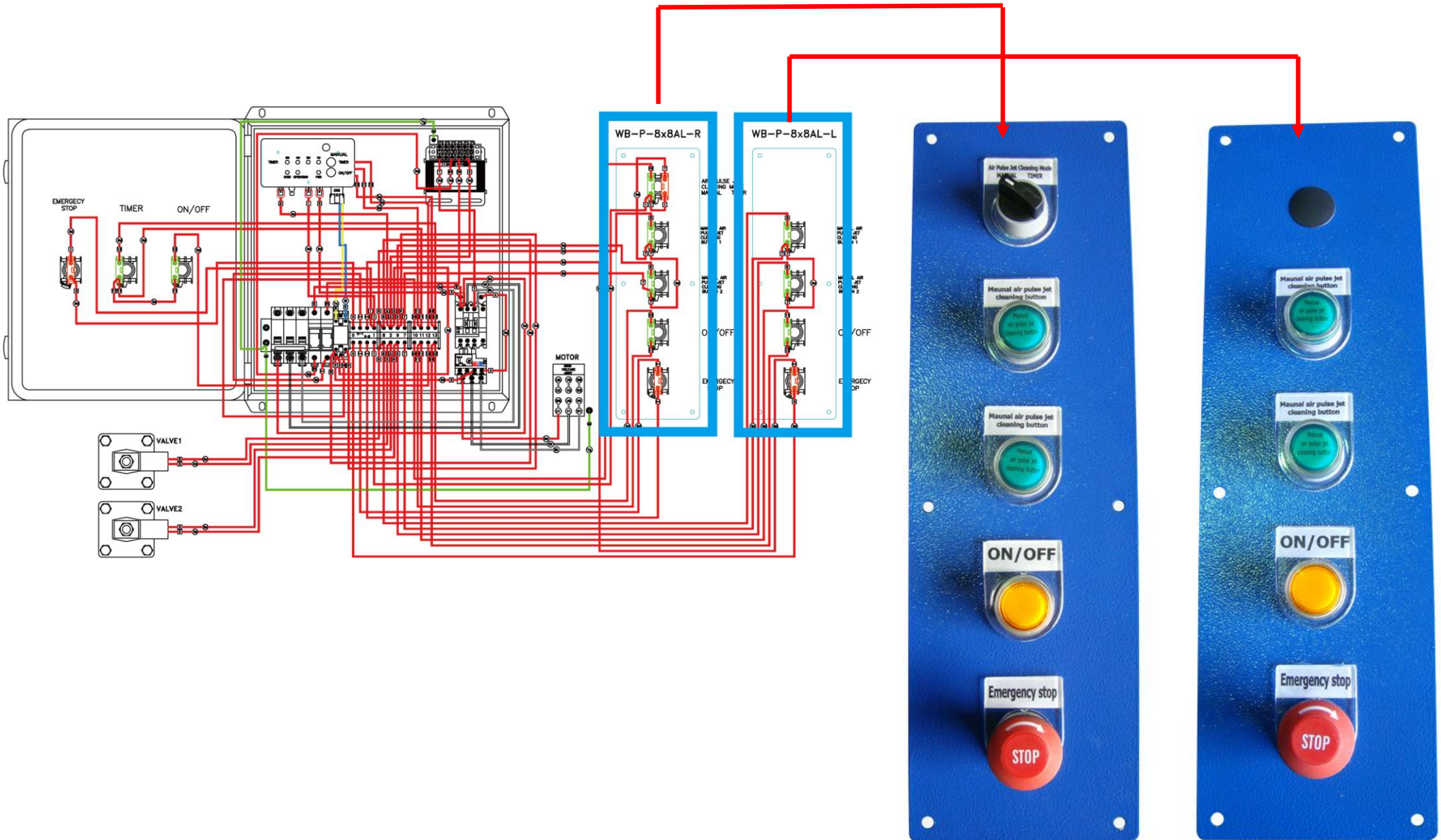
Main Electrical Box Wiring For TMC-10-8



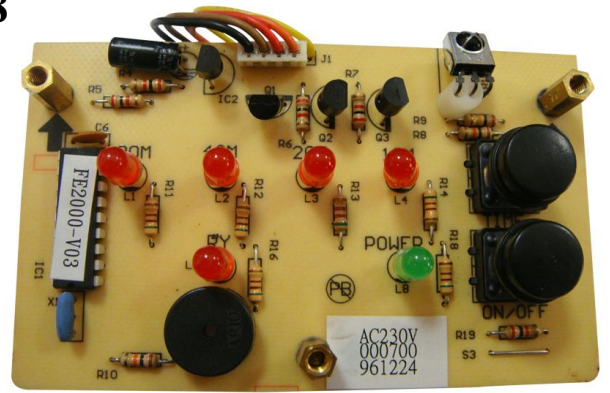
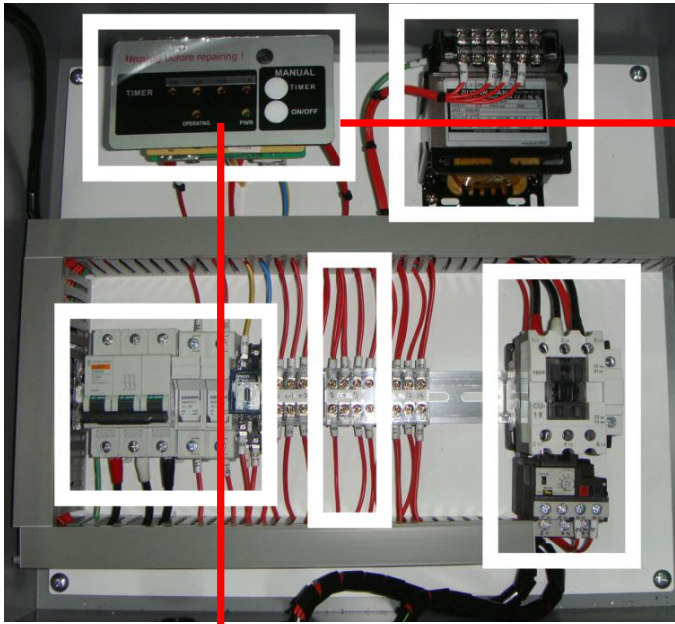
Main Electrical Box Components for TMC-10-8



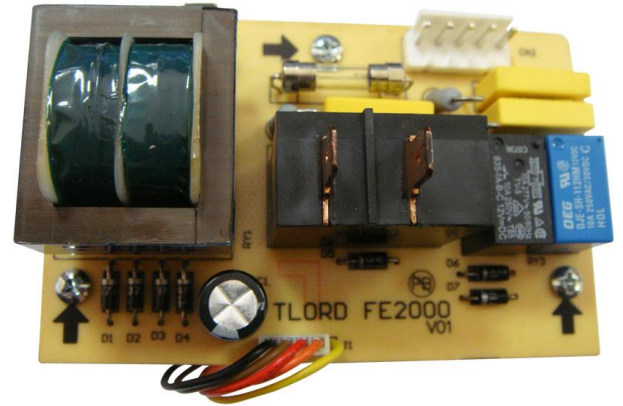
Main Electrical Box Components for TMC-10-8



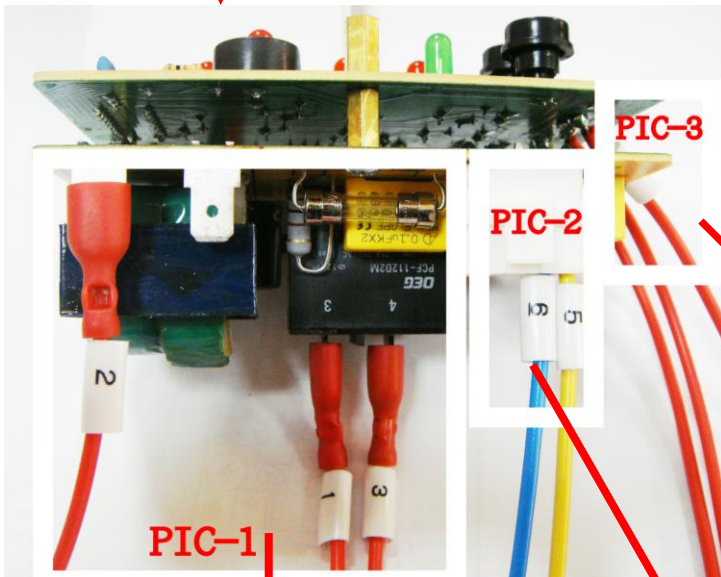
Main Electrical Box Components for TMC-10-8



◆ IC Board (Front)



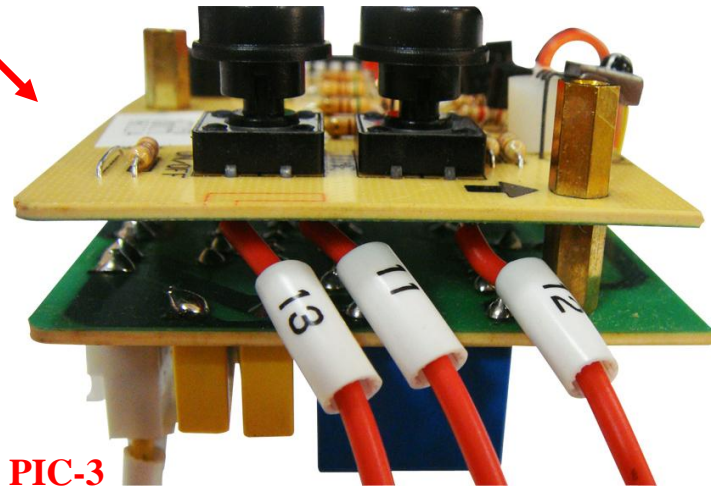
◆ IC Board (Back)



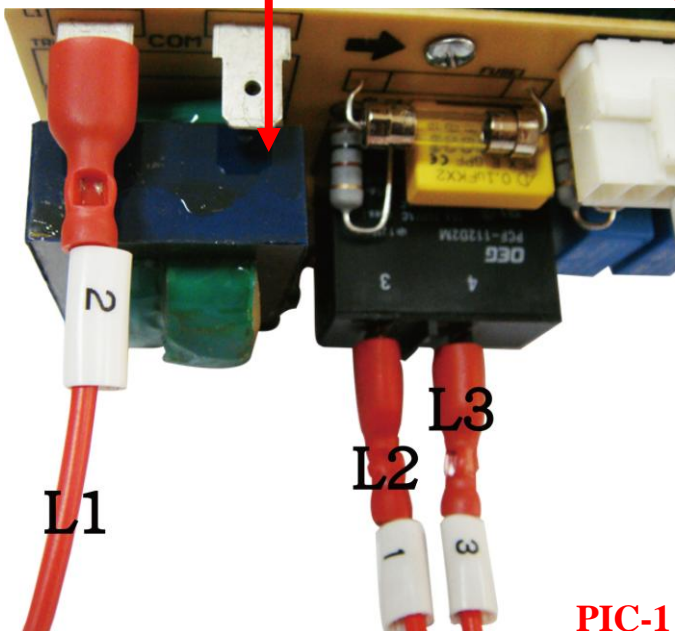
PIC-1

PIC-2

PIC-3



PIC-3

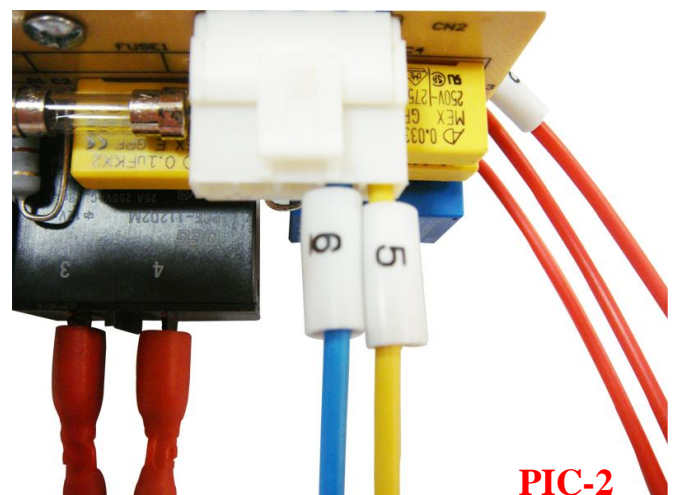


L1

L2

L3

PIC-1



PIC-2

◆ 12 : TIMER.

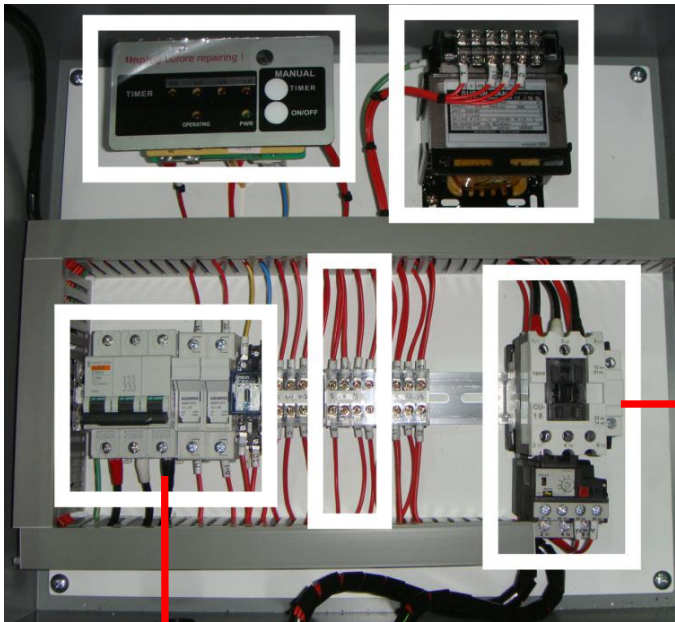
◆ 13 : ON/OFF

◆ L1/L2 : The main power.

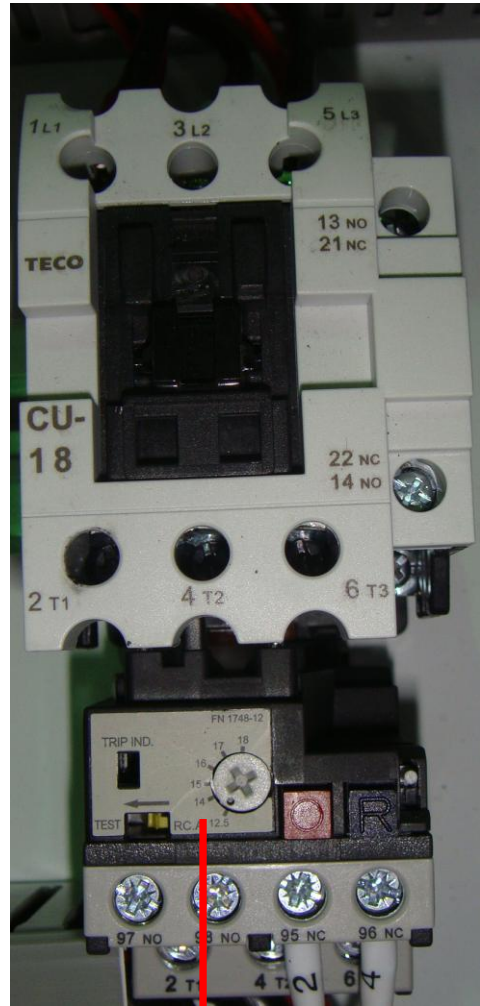
◆ L3 : The blower.

◆ Air pulse jet system.

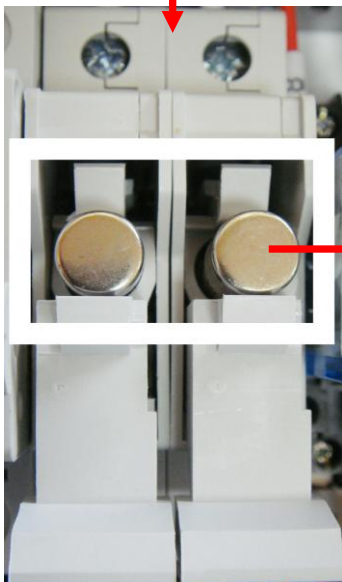
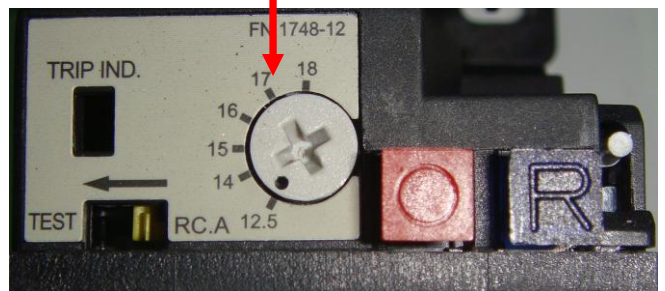
Main Electrical Box Components for TMC-10-8



◆ Contactor and thermal relay. (10HP-460V)

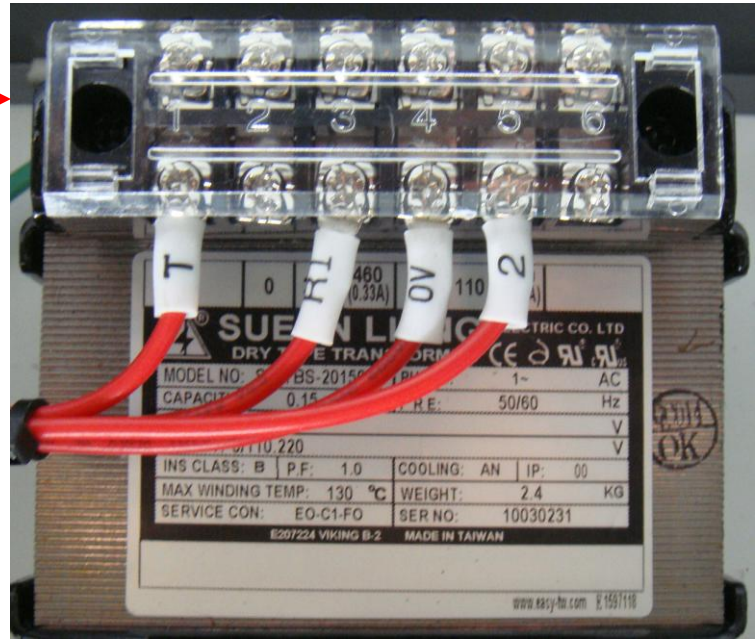
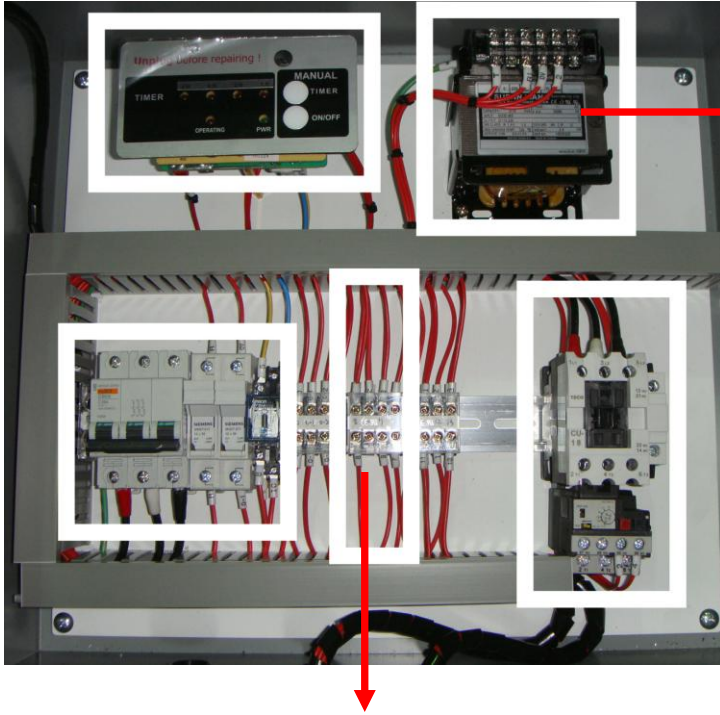


◆ Input relay, fuse bus, phase controller.



Main Electrical Box Components for TMC-10-8

◆ Transformer for 460V.



◆ Air pulse jet system.



◆ Coin

