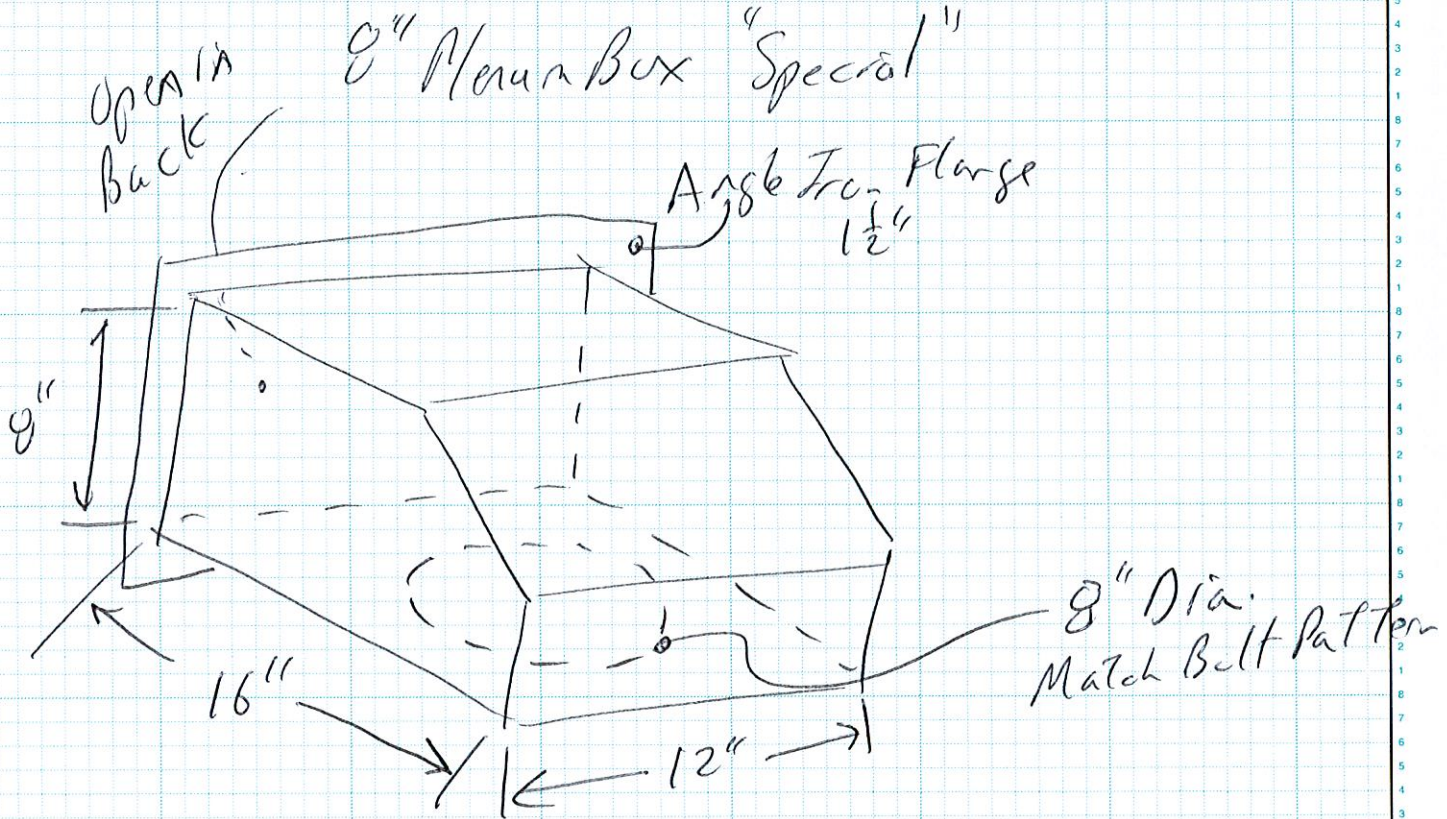
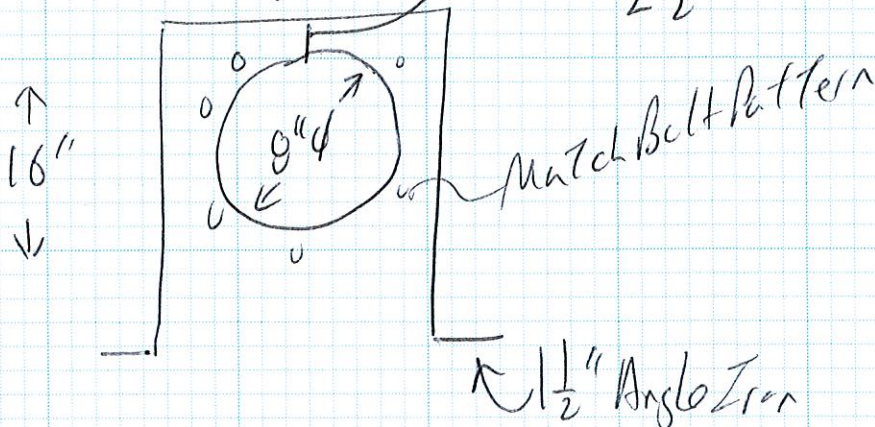


Air & Energy Solutions

8" Man Box "Special"



Bottom View
 = 12" → Start Hole
 2 1/2" From End



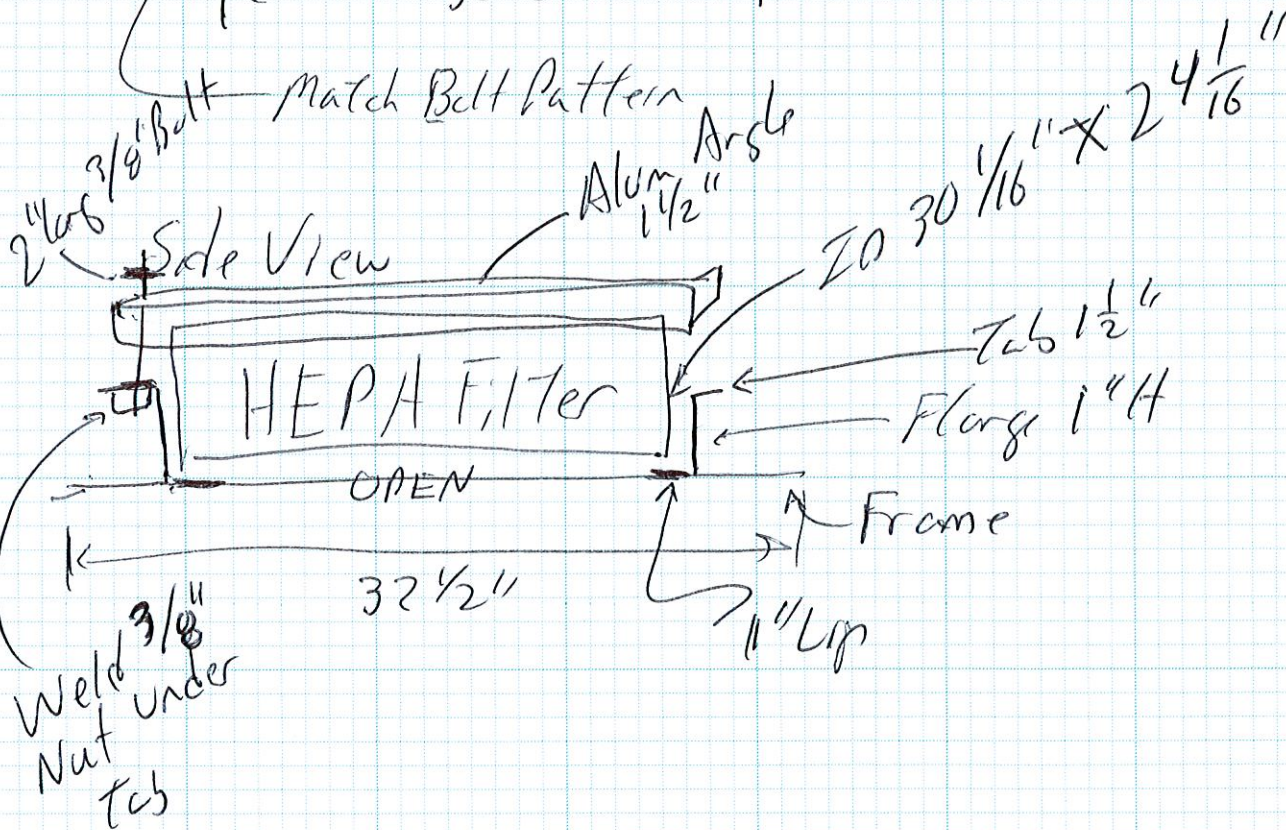
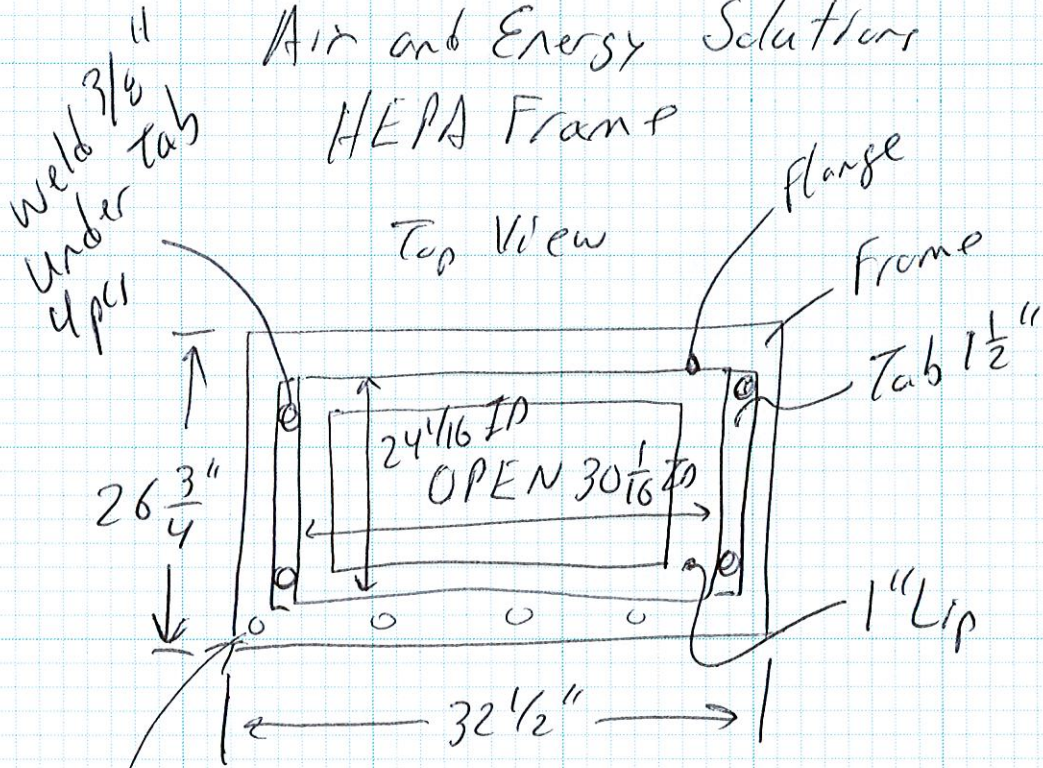
Plans

AVANI ENVIRONMENTAL INTL, INC.
 Main: (919) 570-2862 • Fax: (919) 570-2863
 www.avanienvironmental.com
 www.weldingbooths.com
 www.miststop.com
 Email: info@avanienvironmental.com

JOB _____
 SHEET NO. _____ OF _____
 CALCULATED BY _____ DATE _____
 CHECKED BY _____ DATE _____
 SCALE _____

1 2 3 4 5 6 7 8 1 2 3 4 5 6 7 8 1 2 3 4 5 6 7 8 1 2 3 4 5 6 7 8 1 2 3 4 5 6 7 8 1 2 3 4 5 6 7 8 1 2 3

Air and Energy Solutions
 HEPA Frame



AVANI ENVIRONMENTAL INTL, INC.
Main: (919) 570-2862 • Fax: (919) 570-2863
www.avanienvironmental.com
www.weldingbooths.com
www.miststop.com
Email: info@avanienvironmental.com

JOB _____
SHEET NO. _____ OF _____
CALCULATED BY _____ DATE _____
CHECKED BY _____ DATE _____
SCALE _____

HEPA Frame

