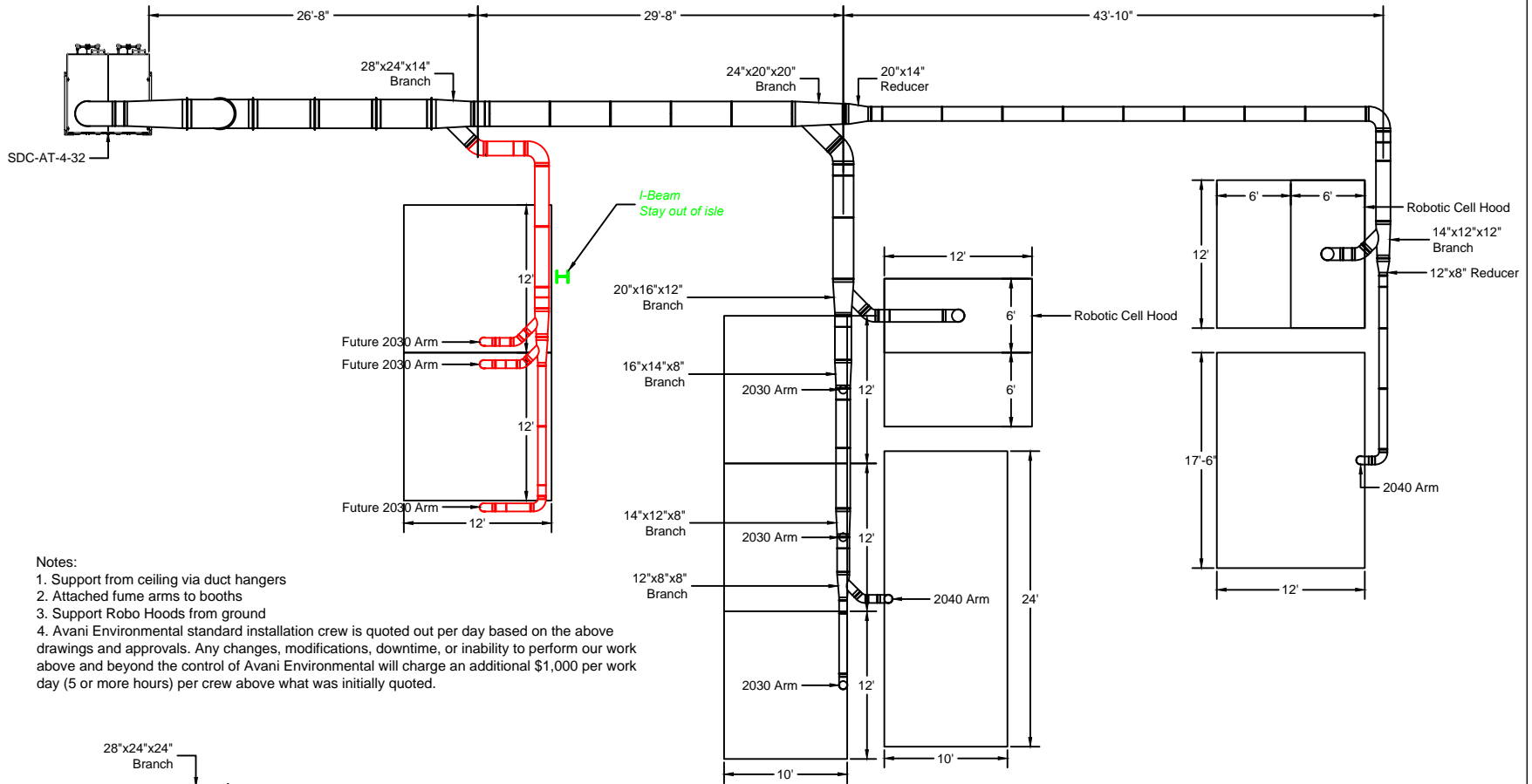
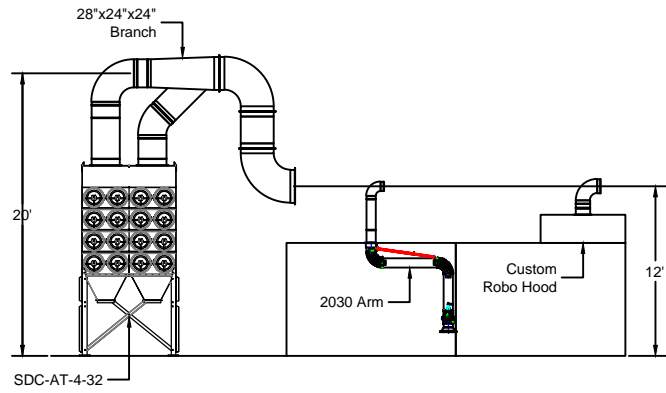


AirGas SO22056 Duct Layout



- Notes:
1. Support from ceiling via duct hangers
 2. Attached fume arms to booths
 3. Support Robo Hoods from ground
 4. Avani Environmental standard installation crew is quoted out per day based on the above drawings and approvals. Any changes, modifications, downtime, or inability to perform our work above and beyond the control of Avani Environmental will charge an additional \$1,000 per work day (5 or more hours) per crew above what was initially quoted.



Plan View

Elevation View

Avani Environmental Intl. Inc. 95 Cypress Drive Youngsville, NC 27596 P# 919-570-2862 F# 919-570-2863		
Project: AirGas SO22056		
Drawing: Duct Layout		
Date: 6/22/15	Drawn by: DJT	
Sheet No:	Rev A	