

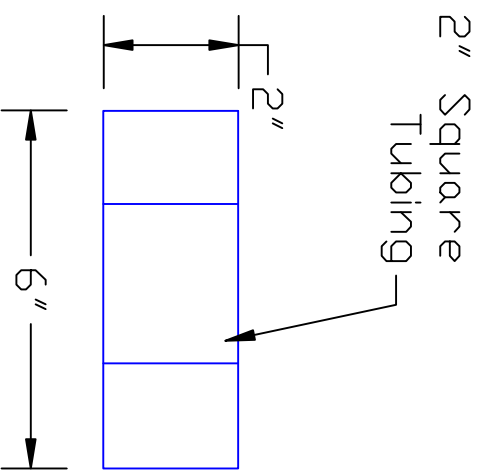
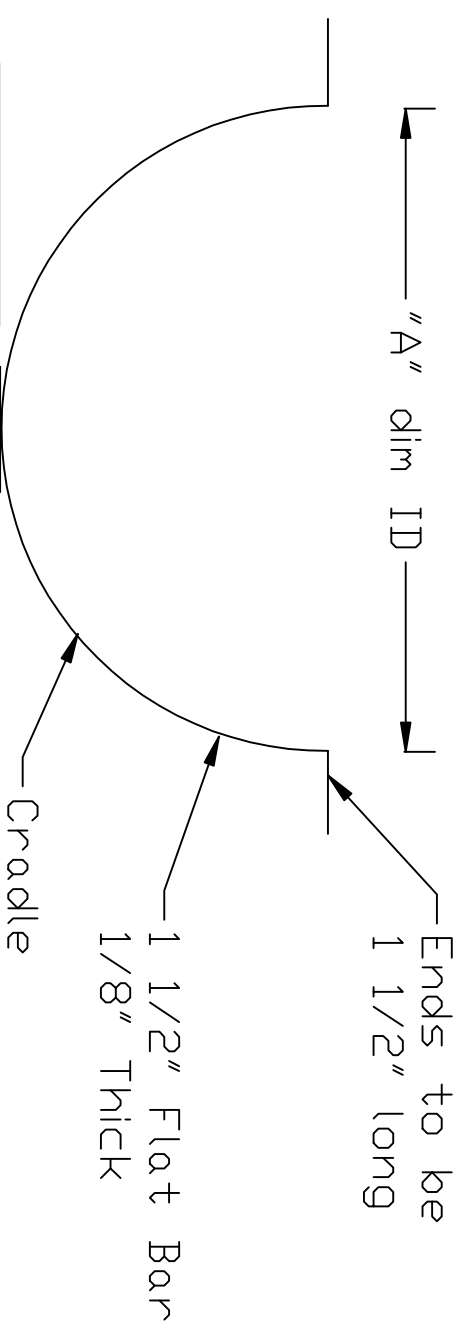
Ductwork Cradle Wall Bracket

This bracket is to be install along the back wall

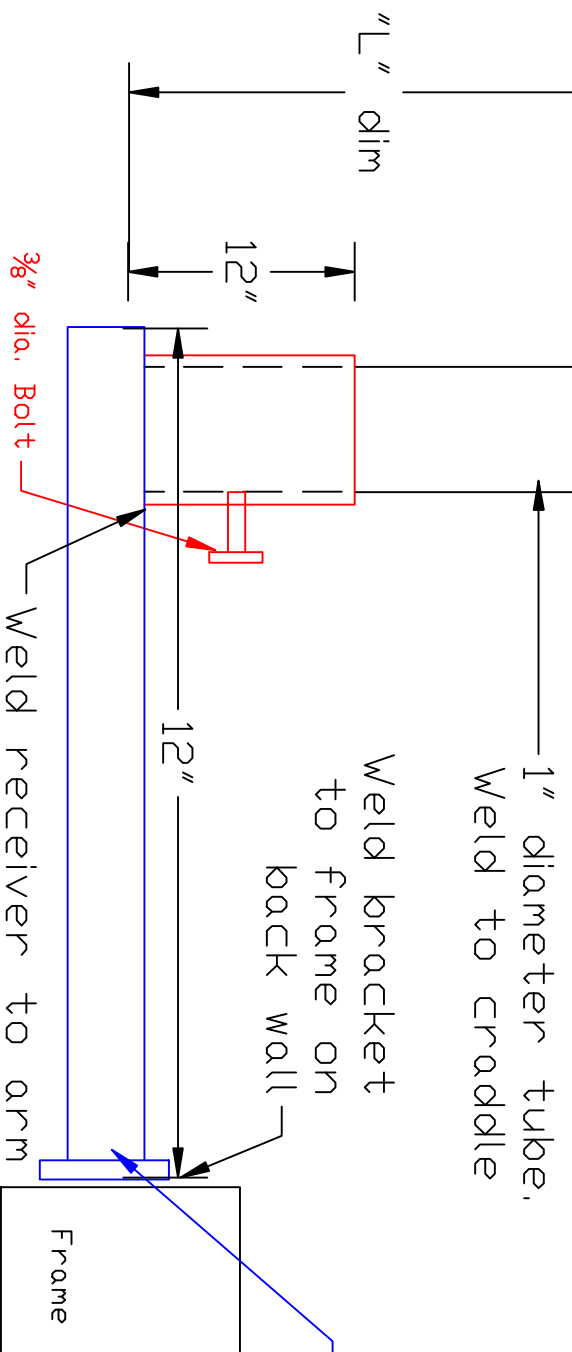
Dim

Qty 8pcs A 10 1/4" L 18"

Side View



End View of Arm plate



Use 2" square tubing

Avoni Environmental Int'l Inc.
 95 Cypress Drive 27596
 Youngsville, NC F# 919-570-2862 P# 919-570-2863
AEI
 Project: Cordero Mine
 Drawing: Ductwork Cradle
 Date: 11/27/11 Drawn by: RAV
 Sheet No: