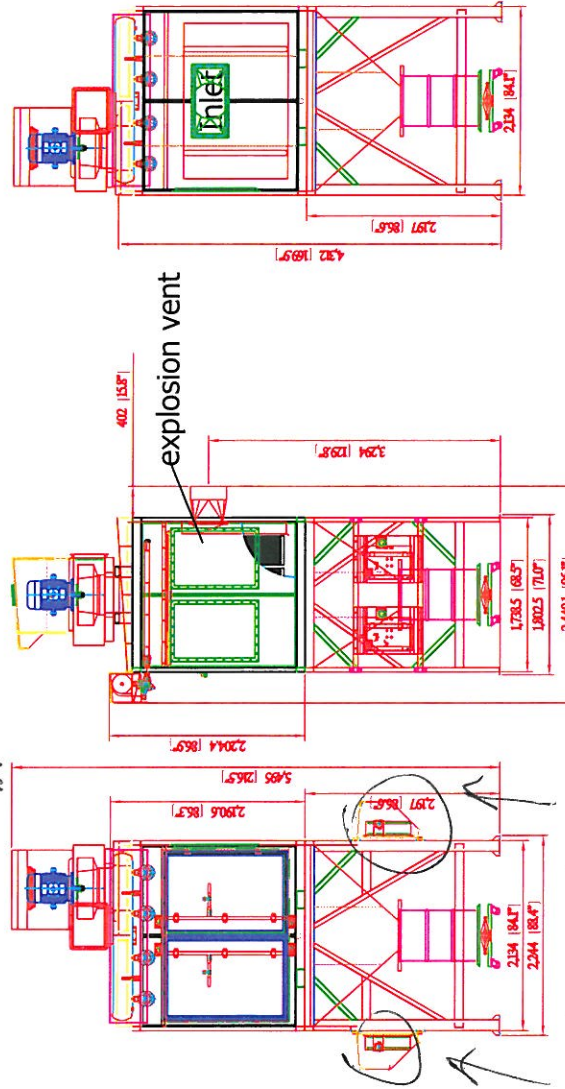
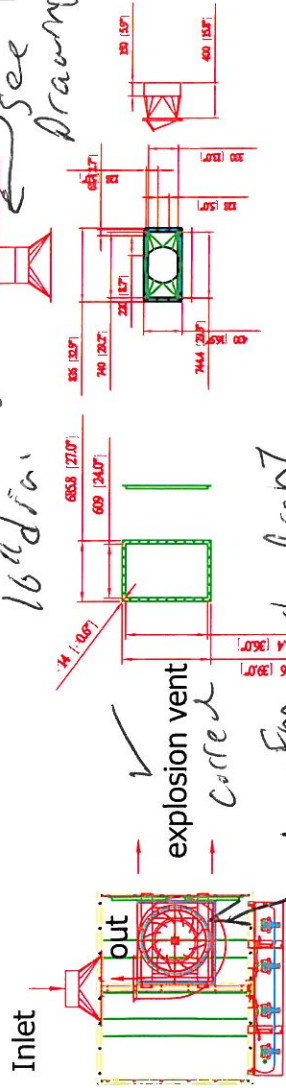


Need Angle Flange see drawing "B" for dimensions
 16" dia
 SDC-15-16 SPECIFICATION -



Are these the Control Panel and Pulse Panels
 They want them on the two Left Side, Is there two or 1 panel? PLAN DETAIL

- Direct Drive Blower (on top)
- Motor: 15HP x 1 pc
- CFM: 6,400 ft³/min @ 8" SP
- Include:
 - UL Individual Control Boxes for Cartridge Collector and Blowers

- ***Inlet: Dia. 16" (will provide inlet square to round)
- Cartridge Filter: Dia. 325mm x 1320mm x 16pcs (Dia. 12.8" x 52" x 16pcs)
- Material: Polyester with TEFLON coating.
- Filter Area: 19m² x 16 = 304 m² (3271.04 ft²)
- Pleat Depth: 48mm

- Horizontal Positioned Filters, Continuous Welded Seams, Gasket and Latched Doors, Powder Coated Paint and Reverse Jet Pulse Cleaning
- Include:
 - Drum & Jack Lifting Tool
 - Filter Chamber
 - Hopper
 - Inlet Square Pipe (need dimensions)
 - Fan/motor combinations
- No. of Valves: 4

- Inlet Air: 7"
- Compressed Air Requirement: 90 PSI
- Compressed Air Reservoir: 15.8 gallon
- Dimension: 88.4" x 96.1" x 216.5" (2244 x 2440.1 x 5495mm)
- Construction: 13 Gauge for panel; 11 Gauge Steel Cabinet
- Max. Operating Temp.: 120°C
- Paint Color: Blue

***hole for explosion vent: 24"W x 36"H x 2pcs

| | | | | | |
|--|--|--|------------------|------------------------|----------------------------------|
| AVANI ENVIRONMENTAL INTL. INC. Sales Department 95 Cypress Drive Youngsville, NC 27596 | | Drawn by: 2011-08-29 Checked by: 2010-12-16 | Name: 2011-06-27 | Part Number: SDC-15-16 | Title: Large Cartridge Collector |
| info@avanienvironmental.com | | | | Size Scale: B 1 = 1 | Drawing Number: SV-1600-15-02 |

The drawings, AutoCAD, 3-D Models, and specifications are the property of Avani Environmental Int. Inc. (AE) and may not be reproduced, distributed, modified, or otherwise used, except provided herein, without the express written permission of AE.

LASER QUICK-FIT

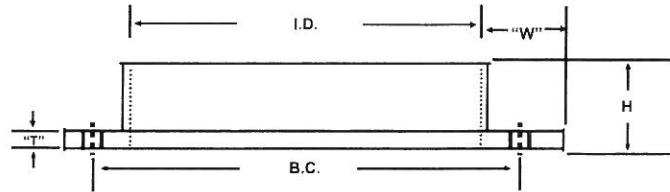
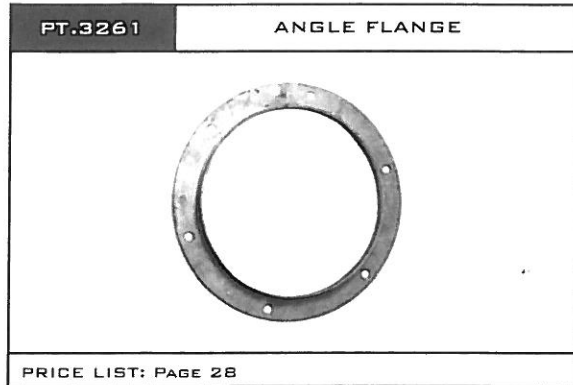


ROCK-SOLID DURABILITY
WITH THE PERFECT SIZE
AND CONFIGURATION FOR
EVERY APPLICATION

Drawing B

AVAILABLE IN GALVANIZED STEEL (STANDARD)
OR STAINLESS STEEL (OPTIONAL).

ANGLE FLANGE



Galvanized and stainless steel metal
Angle Ring Flanges.

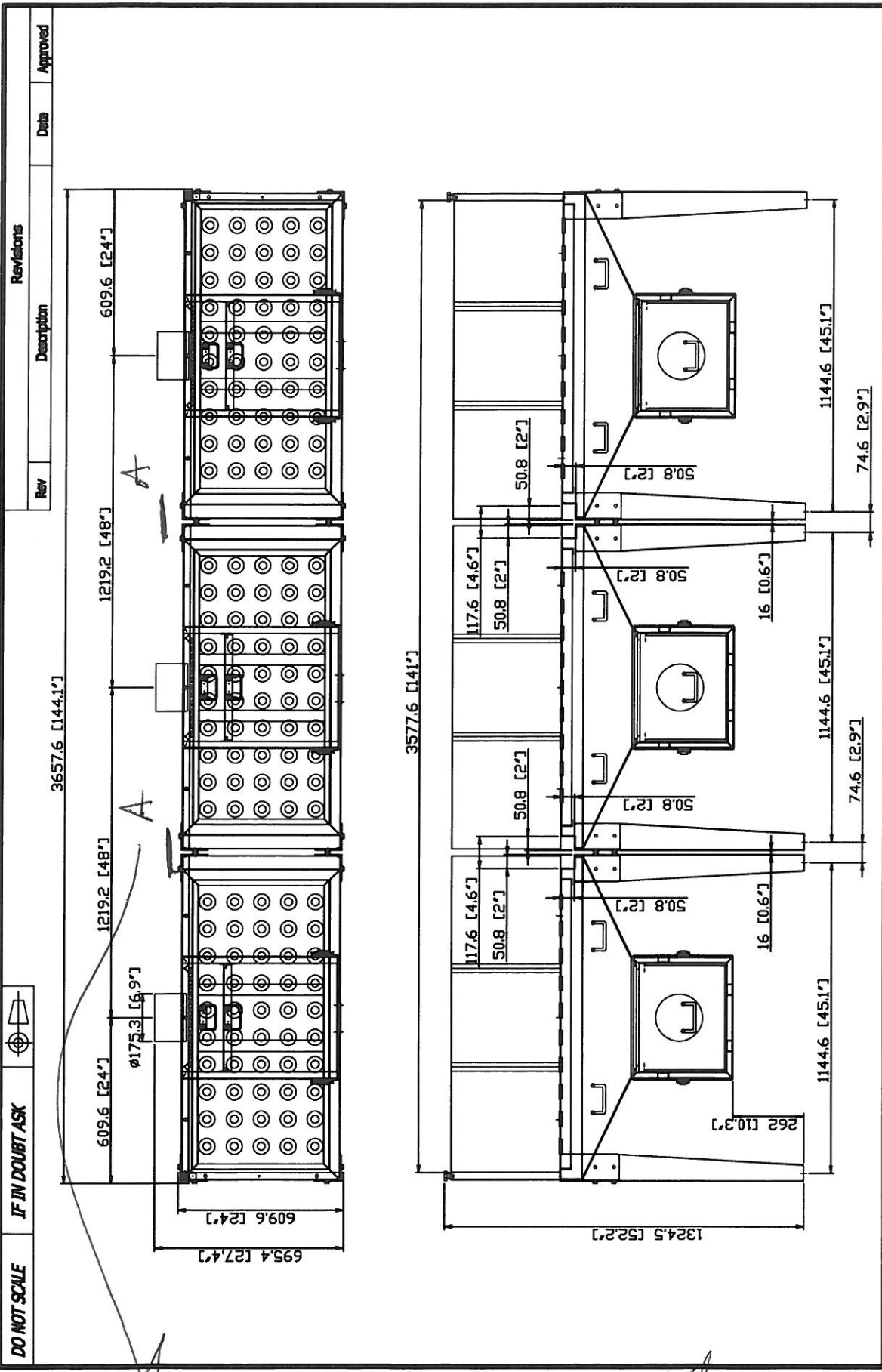
| DIA. (D) INCHES | PART NO. | I.D. | H | W | T | B.C. | NO. OF BOLTS | DIA. OF BOLT HOLES |
|--------------------|----------|---------|--------|--------|-------|-----------|-----------------|-----------------------|
| 3 | 3261-03 | 3 1/16" | 7/8" | 1" | 1/8" | 4 5/16" | 6 | 9/32" |
| 4 | 3261-04 | 4 1/16" | 15/16" | 1" | 1/8" | 5 5/16" | 6 | 9/32" |
| 5 | 3261-05 | 5 1/16" | 1" | 1" | 1/8" | 6 5/16" | 6 | 9/32" |
| 6 | 3261-06 | 6 3/32" | 1" | 1" | 1/8" | 7 5/16" | 6 | 9/32" |
| 7 | 3261-07 | 7 1/8" | 1" | 1 1/8" | 1/8" | 8 1/2" | 6 | 3/8" |
| 8 | 3261-08 | 8 1/8" | 1 1/8" | 1 1/8" | 1/8" | 9 9/16" | 6 | 3/8" |
| 9 | 3261-09 | 9 1/8" | 1 1/4" | 1 1/4" | 1/8" | 10 5/8" | 6 | 7/16" |
| 10 | 3261-10 | 10 1/8" | 1 1/4" | 1 3/8" | 1/8" | 11 13/16" | 6 | 7/16" |
| 11 | 3261-11 | 11 1/8" | 1 1/4" | 1 1/2" | 1/8" | 12 3/4" | 6 | 7/16" |
| 12 | 3261-12 | 12 1/8" | 1 1/2" | 1 1/2" | 1/8" | 14 -" | 8 | 7/16" |
| 13 | 3261-13 | 13 1/8" | 1 1/2" | 1 1/2" | 1/8" | 15 -" | 8 | 7/16" |
| 14 | 3261-14 | 14 1/8" | 1 1/2" | 1 1/2" | 1/8" | 16 -" | 8 | 7/16" |
| 15 | 3261-15 | 15 1/8" | 1 1/2" | 1 1/2" | 3/16" | 17 -" | 8 | 7/16" |
| 16 | 3261-16 | 16 1/8" | 1 1/2" | 1 1/2" | 3/16" | 18 -" | 8 | 7/16" |
| 17 | 3261-17 | 17 1/8" | 1 1/2" | 1 1/2" | 3/16" | 19 -" | 8 | 7/16" |
| 18 | 3261-18 | 18 1/8" | 1 1/2" | 1 1/2" | 3/16" | 20 -" | 8 | 7/16" |
| 19 | 3261-19 | 19 1/8" | 1 1/2" | 1 1/2" | 3/16" | 20 3/4" | 12 | 7/16" |
| 20 | 3261-20 | 20 1/8" | 1 1/2" | 1 1/2" | 3/16" | 21 3/4" | 12 | 7/16" |
| 21 | 3261-21 | 21 1/8" | 1 1/2" | 1 1/2" | 3/16" | 22 3/4" | 12 | 7/16" |
| 22 | 3261-22 | 22 1/8" | 1 1/2" | 1 1/2" | 3/16" | 23 3/4" | 12 | 7/16" |
| 23 | 3261-23 | 23 1/8" | 1 1/2" | 1 1/2" | 3/16" | 24 7/8" | 12 | 7/16" |
| 24 | 3261-24 | 24 1/8" | 1 1/2" | 1 1/2" | 3/16" | 25 7/8" | 12 | 7/16" |
| 25 | 3261-25 | 25 1/8" | 1 1/2" | 1 1/2" | 3/16" | 26 7/8" | 16 | 7/16" |
| 26 | 3261-26 | 26 1/8" | 2" | 2" | 3/16" | 28 3/8" | 16 | 7/16" |
| 27 | 3261-27 | 27 1/8" | 2" | 2" | 3/16" | 29 3/8" | 16 | 7/16" |
| 28 | 3261-28 | 28 1/8" | 2" | 2" | 3/16" | 30 3/8" | 16 | 7/16" |
| 29 | 3261-29 | 29 1/8" | 2" | 2" | 3/16" | 31 3/8" | 16 | 7/16" |
| 30 | 3261-30 | 30 1/8" | 2" | 2" | 3/16" | 32 3/8" | 16 | 7/16" |
| 31 | 3261-31 | 31 1/8" | 2" | 2" | 3/16" | 33 3/8" | 16 | 7/16" |
| 32 | 3261-32 | 32 1/8" | 2" | 2" | 3/16" | 34 3/8" | 16 | 7/16" |
| 33 | 3261-33 | 33 1/8" | 2" | 2" | 3/16" | 35 3/8" | 16 | 7/16" |
| 34 | 3261-34 | 34 1/8" | 2" | 2" | 3/16" | 36 3/8" | 16 | 7/16" |
| 35 | 3261-35 | 35 1/8" | 2" | 2" | 3/16" | 37 3/8" | 16 | 7/16" |
| 36 | 3261-36 | 36 1/8" | 2" | 2" | 3/16" | 38 3/8" | 16 | 7/16" |
| 37 | 3261-37 | 37 1/8" | 2" | 2" | 3/16" | 39 3/8" | 24 | 7/16" |
| 38 | 3261-38 | 38 1/8" | 2" | 2" | 3/16" | 40 3/8" | 24 | 7/16" |
| 39 | 3261-39 | 39 1/8" | 2" | 2" | 3/16" | 41 3/8" | 24 | 7/16" |
| 40 | 3261-40 | 40 1/8" | 2" | 2" | 3/16" | 42 3/8" | 24 | 7/16" |

16" diameter →

ORDERING NOTES:

UNLESS SPECIFIED, 3" THROUGH 24" IS QF, OVER 24" IS FLANGED. DATA SUBJECT TO CHANGE WITHOUT NOTICE.
STAINLESS STEEL COMPONENTS REQUIRING FLANGES WILL BE SUPPLIED WITH SS FLANGES UNLESS OTHERWISE SPECIFIED.
STAINLESS STEEL COMPONENTS ARE MANUFACTURED WITH NO.304 SS. (PRICES FOR SS 316 = SS 304 X 1.25)
ADDING A SS AFTER STANDARD PART NUMBERS SPECIFIES A SS PART.
FOR SPECIAL PARTS OR ITEMS TO BE CUSTOM MANUFACTURED: CONTACT NORDFAB FOR QUOTATION.

A - Make Back Solid where Forklifting is open on the back
 They do not want the Fork Slot to be



| Rev | Description | Date | Approved |
|-----|-------------|------|----------|
| | | | |



IF IN DOUBT ASK

DO NOT SCALE

| | | | |
|---|---------------------|----------------------------|-------------------------------|
| AVANI ENVIRONMENTAL INTL. INC. Sales Department 95 Cypress Drive Youngsville, NC 27596 (919) 570-2862 info@avanienvironmental.com | | Part Number: *** | Title: (3) SDT-180 |
| Drawn by: 2011-08-29 | Date: *** | Scale: 1 = 18 | Drawing Number: *** |
| The drawings, AutoCAD, 3-D Models, and specifications are the property of Avani Environmental Int. Inc. (AE) and may not be reproduced, distributed, modified, or otherwise used, except provided herein, without the express written permission of AE. | | Size: B | Scale: 1 = 18 |