

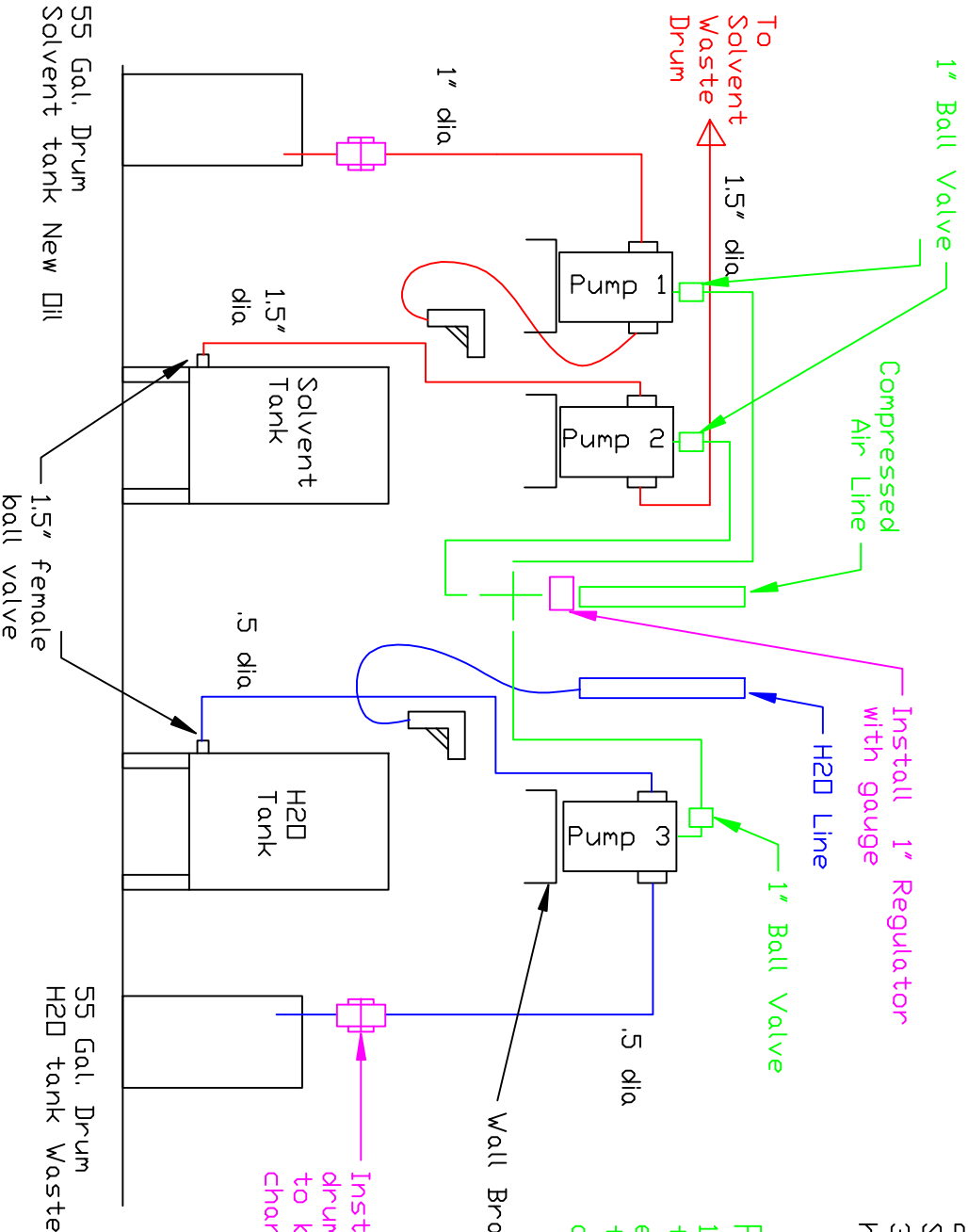
## Side View

## Spray Gun Notes:

- 1) The line is 3/8" dia running from the pump to the spray gun.
- 2) The hose for the Solvent has to handle it.
- 3) The hose for the Water has to handle water.

## Pump Notes:

1) Install 1" ball valve on the air inlet connection to each pump. This will be used to turn the pumps off and on.



Install Union just above each drum. This will allow the piping to be undone and removed before changing out the drum.

Wall Bracket for pump