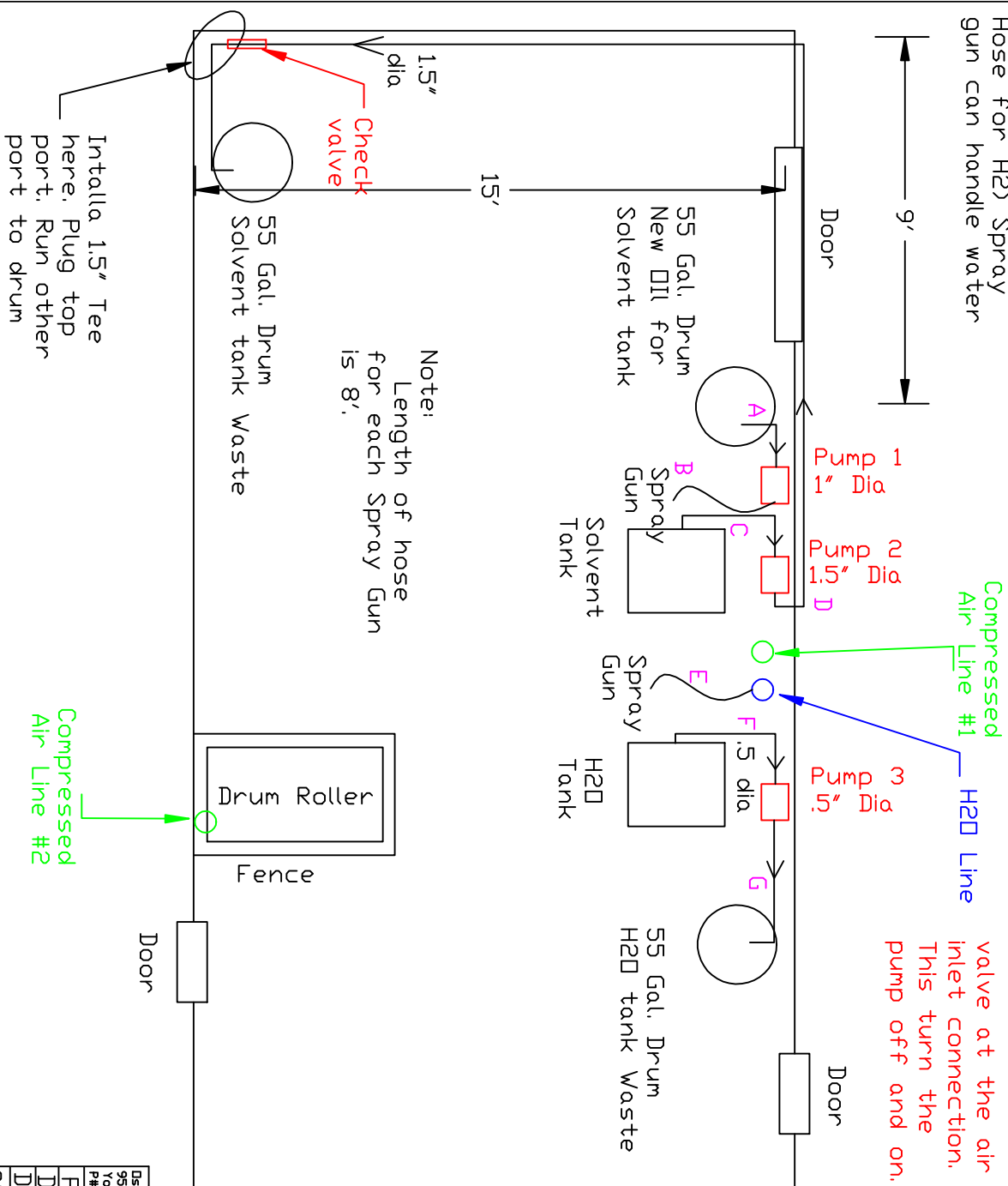


Piping Detail for Mix Room

Plan View

All hard piping is Stainless Steel.
Hose for Solvent Spray gun cane handle solvent.
Hose for H2O Spray gun can handle water



Pump Notes:

Install a ball valve at the air inlet connection. This turn the pump off and on.

Piping Notes:

- A: 1" dia line from New oil drum to pump 1
- B: 3/8" dia line from pump 1 to Spray Gun
- C: 1.5" dia line from solvent tank ball valve to pump 2.
- D: 1.5" dia line from pump 2 to solvent waste drum.
- E: 3/8" line from H2O line to Spray Gun.
- F: .5" dia line from H2O tank ball valve to pump 3.
- G: 3/8" dia line from pump 3 to H2O waste drum.

Air Line Notes:

- A: Install a 3 way Tee and run piping to each pump.
 - B: Install a 2 way Tee and run piping to the drum roller and fence lock.
- For both air lines install a REGULATOR with pressure gauge before Tee.

Note:
Length of hose for each Spray Gun is 8'.

Intall a 1.5" Tee here. Plug top port. Run other port to drum

DeStar Environmental Products
95 Cypress Drive 27596
Youngsville, NC
P# 919-570-2862 F# 919-570-2863

Oskar

Project: Spirit Aerospace

Drawing: Mix room Plan view

Date: 9/15/10 Drawn by: RAV

Sheet No: 2 of 2