



**Date:** February 15, 2012

**To:** Western Training Center

**Project:**

**Attn:**

**Recommended Equipment:**

(6) WB-1068 ECO Booth: 6'W x 8'D

- with ARM 1620 per booth: dia. 6" x 7'

Fan – local source

---

**Avani Environmental Intl. Inc.**

95 Cypress Drive

Youngsville, NC 27596

[www.avanienvironmental.com](http://www.avanienvironmental.com)

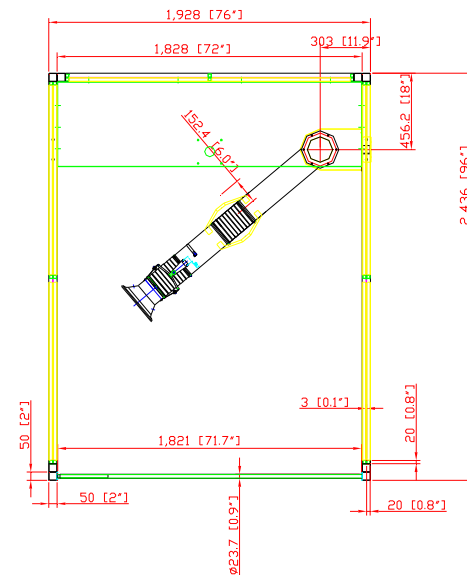
Phone: (919) 570-2862

Fax: (919) 570-2863

Email: [info@avanienvironmental.com](mailto:info@avanienvironmental.com)

[www.weldingbooths.com](http://www.weldingbooths.com)

The drawings, AutoCAD, 3-D Models, and specifications are the property of Avani Environmental Intl. Inc. (AE) and may not be reproduced, distributed, modified, or otherwise used, except provided herein, without the express written permission of AE.

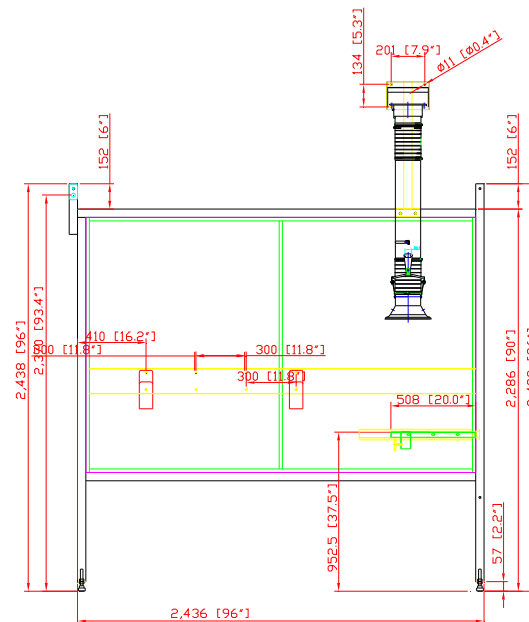
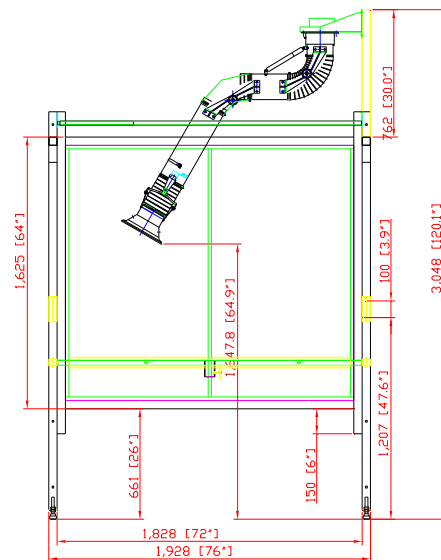


## WB-1068 ECO WELDING BOOTH SPECIFICATIONS

- Adjustable Level System: (4) dia. 2.36" Feet
- Panel Construction: 11-gauge welded steel
- Welding Curtain Supports: (1) set welding curtain bar
- Fume Arm Supports & Brackets: (1) bracket (6 bolt pattern) to match optional dia. 6" fume arm
- Powder Coated: Avani Safety Blue Standard (custom colors available)
- Three Piece Configuration: (2) side panels, (1) back panel.
- Booths can be mounted back-to-back, side-by-side or both options
- \*\*\*Unadjustable Fixed Rear Shelf: 72"W x 20"D x 1.1"H (solid with 2" hole drilled)

## OPTIONS

- Welded Nuts: Optional locations for J-Hooks
- Welding Nuts: For wire feeder or welder bracket



(6) WB-1068 w/ ARM 1620

Fan (local source)

