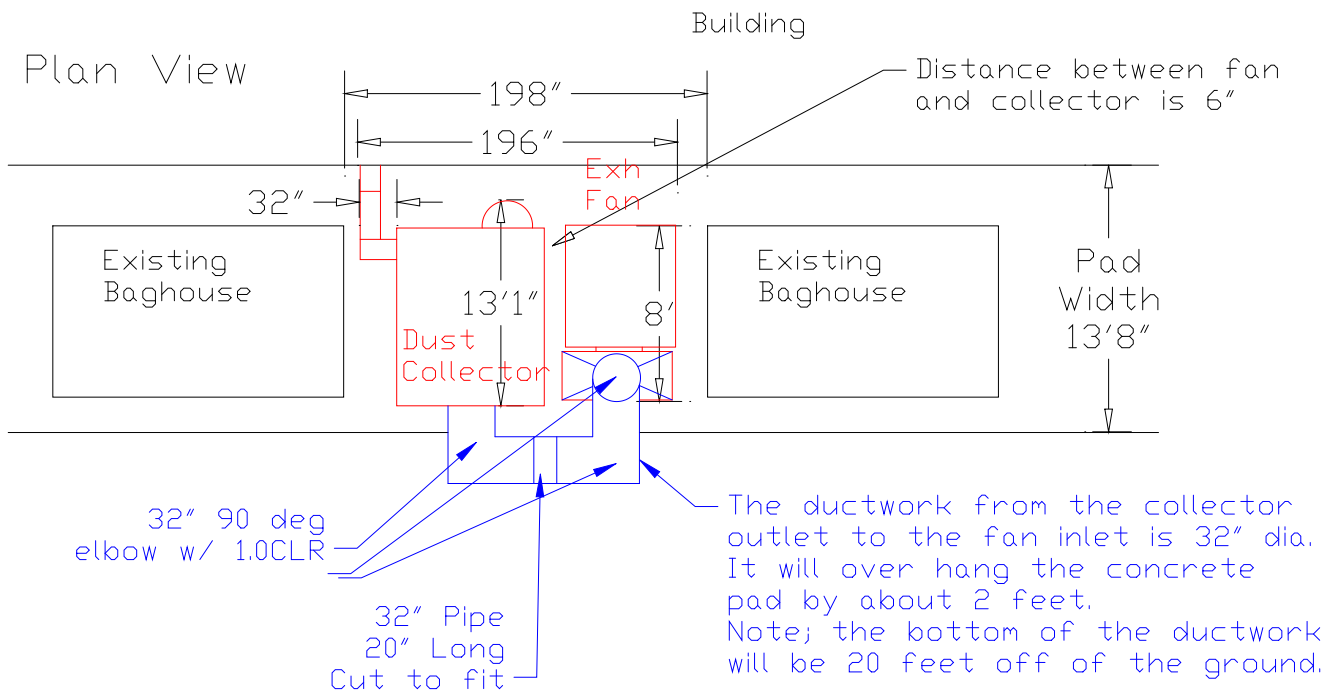


Equipment Layout for the Dust Collector

Plan View



Note:

- A) From the fan exhaust there is a rect to round transition flat on back to 32" round (flanged).
- B) After the transition there is 16' of 32" Pipe vertically.

Industrial Air Quality	
102 AG DRIVE Youngsville, NC 27596	
P# 919-562-7181	F# 919-562-7182
Project: North Am. GALV	
Drawing: Equipment layout	
Date: 10/15/07 Drawn by: RAV	
Sheet No:	

