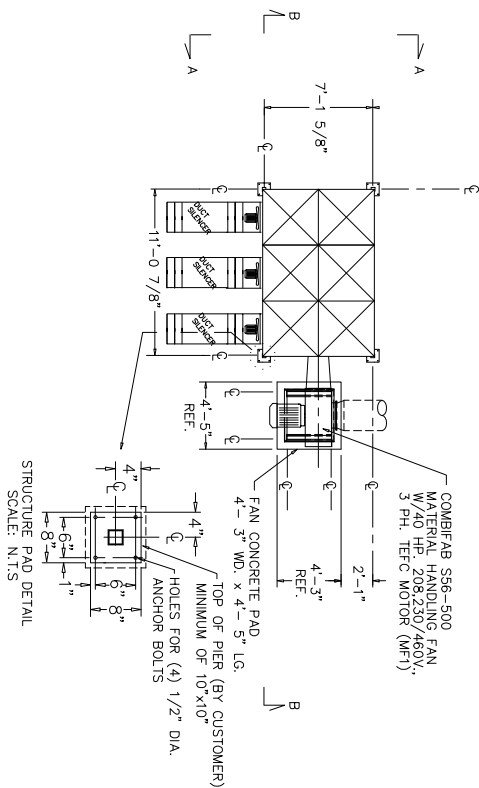




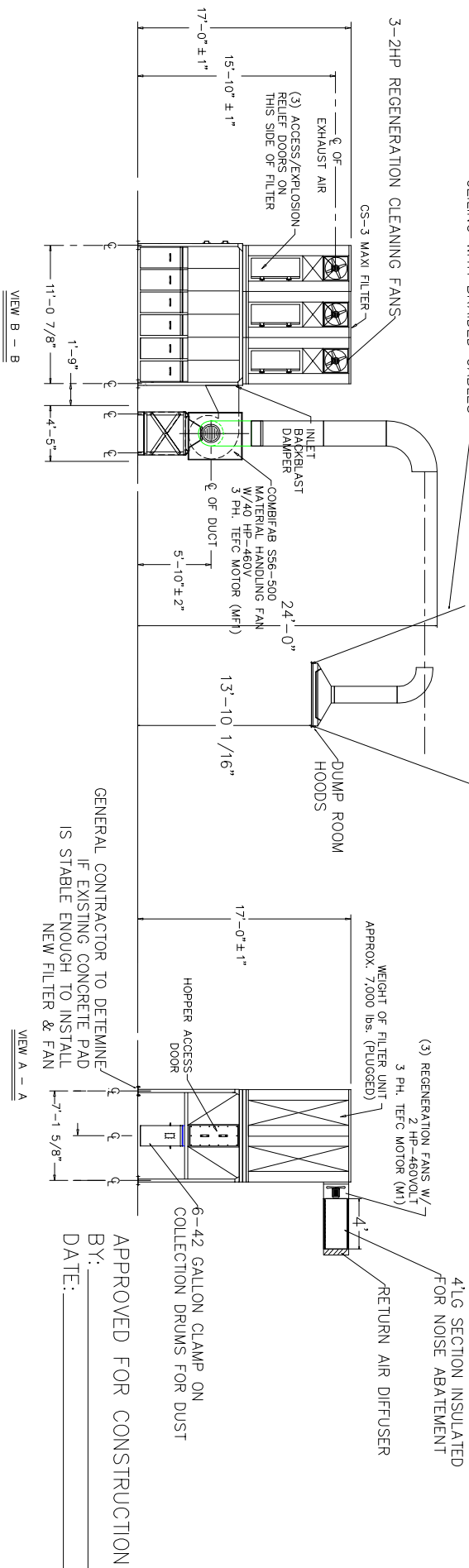
Rev	Description	Date	Approved
-----	-------------	------	----------



CS-3 MAXI MODULAR FILTER
 NO. OF BAGS-92
 TOTAL FILTER AREA- 1725 SQ. FT.
 DESIGN VOLUME 12,000 CUBIC FEET PER MINUTE
 AIR TO CLOTH RATIO AT DESIGN VOLUME - 6.9:1
 COMBIFAB FAN S56-500 W/A 40HP DIRECT DRIVE
 DANFOSS 40HP VARIABLE FREQUENCY DRIVE 40HP 460V
 NOTE: CONNECTING VOLTAGE TO BE 460V

- 1 - DETERMINATION OF CONCRETE FOOTINGS, SIZE, DEPTH, AND MASS TO BE THE RESPONSIBILITY OF GENERAL BASED ON LOCAL SOIL CONDITIONS, WIND LOADS, AND LOAD INFORMATION PROVIDED ON DRAWINGS.
- 2 - IT IS IMPORTANT THAT FILTER PIERS AND FAN PADS BE LEVEL IN ALL PLANES.
- 3 - HOLES IN WALL FOR RETURN AIR AND MAIN TRUNK LINES SHOULD NOT BE MADE UNTIL AFTER THE FILTER IS SET AND HOLES ARE MARKED.
- 4 - PENETRATIONS OF BUILDING FOR ABOVE HOLES TO BE MADE BY OTHERS. ANY FLASHINGS THAT IS REQUIRED TO MATCH BUILDING EXTERIOR AND WATERPROOFING BY OTHERS.
- 5 - NO ANCHORS REQUIRED FOR FILTER OR FAN PADS. FILTER AND FAN ASSEMBLIES TO BE MOUNTED CONCRETE THUNDERSTUDS OR CHEMICAL ANCHORS.

IAQ INSTALLERS TO SUSPEND HOODS FROM FOUR POINTS TO CEILING WITH BRAIDED CABLES



IAQ INDUSTRIAL AIR QUALITY, INC.

95 Cypress Dr
 Youngsville, NC 27596
 919-562-7181

Chuck Morrison
 Office: 336-778-1236
 cmorrison@iaqsales.com

Date	Name	Port Number:	Title:
Drawn by: 10-9-06	C.MORRISON	CS-3-MAXI	IRON MOUNTAIN PORTLAND, OR

Checked by: _____

This drawing is confidential and is the exclusive property of Industrial Air Quality. No unauthorized use/copy or disclosure is to be made and it is returned whenever required.

Size Scale Drawing Number:
 A NO SCALE 0607077-2