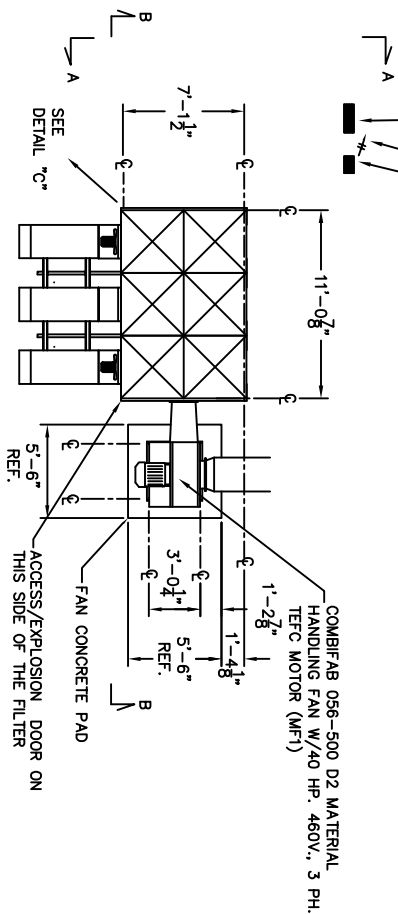


CS FILTER CONTROL PANEL (CUSTOMER TO LOCATE MUST BE UNDER ROOF) 24"H x 15"W x 8"D W/ 30 AMP NON-FUSED DISC SWITCH

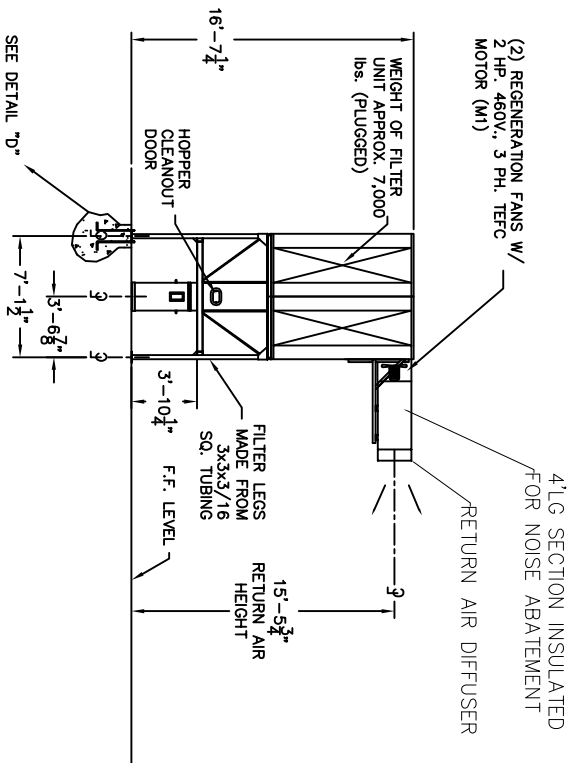
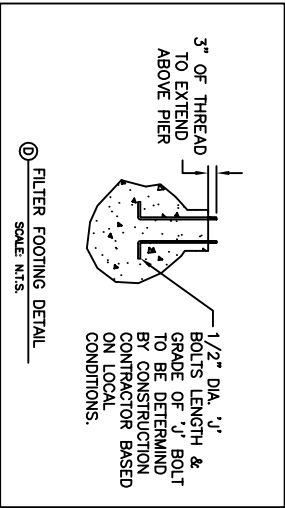
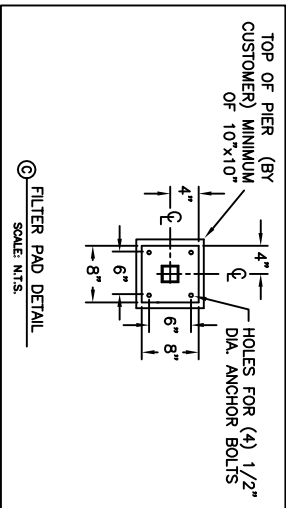
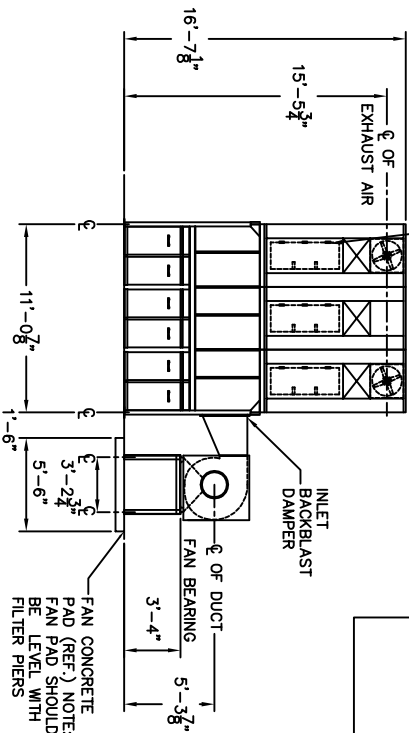
6 COND. CONTROL CKT. TO FILTER CONTROL PANEL

40 HP. MOTOR STARTER CUSTOMER TO LOCATE (MUST BE UNDER ROOF)

CS-3 MAXI MODULAR FILTER
NO. OF BAGS-150
TOTAL FILTER AREA- 1725 SQ. FT.
DESIGN VOLUME 15,000 CUBIC FEET PER MINUTE AIR
TO CLOTH RATIO AT DESIGN VOLUME - 8.7 : 1



(3) ACCESS/EXPLOSION RELIEF DOORS ON



VIEW A - A

APPROVED FOR CONSTRUCTION

BY: _____

FOR: _____

DATE: _____

WITH CORRECTIONS/CHANGES AS NOTED

102 Tronell Ave. Thomasville, NC 27290 TEL: (336) 821-0800 FAX: (336) 821-0880		Size BAG OR BARREL LOADING		Date 07-01-05 Name MARSH	
This drawing is confidential and is the exclusive property of Scale Industries Corporation. No unauthorized use/copy or disclosure is to be made and it is returned when requested.		Scale 3/16" = 1'		Drawing Number: 1A1CS3M1	
CS-3 MAXI FILTER WITH COMBIFAB S86-500 D2 COUNTER-CLOCKWISE FAN		Drawn By: 07-01-05 Name MARSH		Rev Sht	