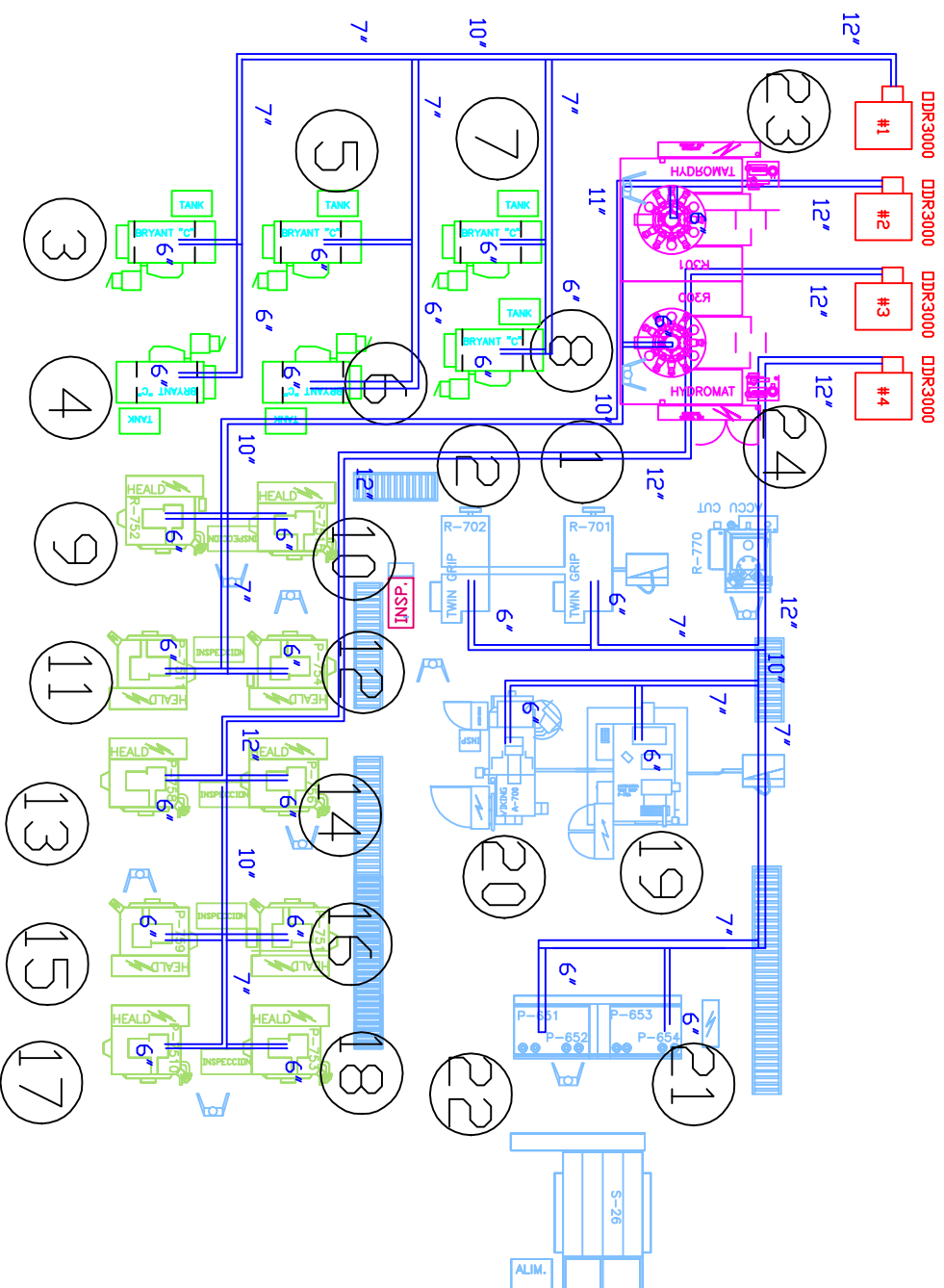


DDR3000 Duct Layout



Notes:

- All drops are 6' dia with a 6' blastgate
- Currently there is an 8' connection to each machine. Attach 8' angle flange adaptor then an 8' to 6' reducer. If you can not do it, then cut the flange off of the 8' angle adaptor and use it like a hose adaptor. They have 8' flex on all their machine, including the Hydromats.
- Eaton will remove the Aercology units on Sunday morning. Reuse the the threaded rod and unistrut as needed. I have sent Gripples for your first choice.
- Silicone each clamp.
- Check rotation on each Absolent unit and make sure the filters are locked in place.