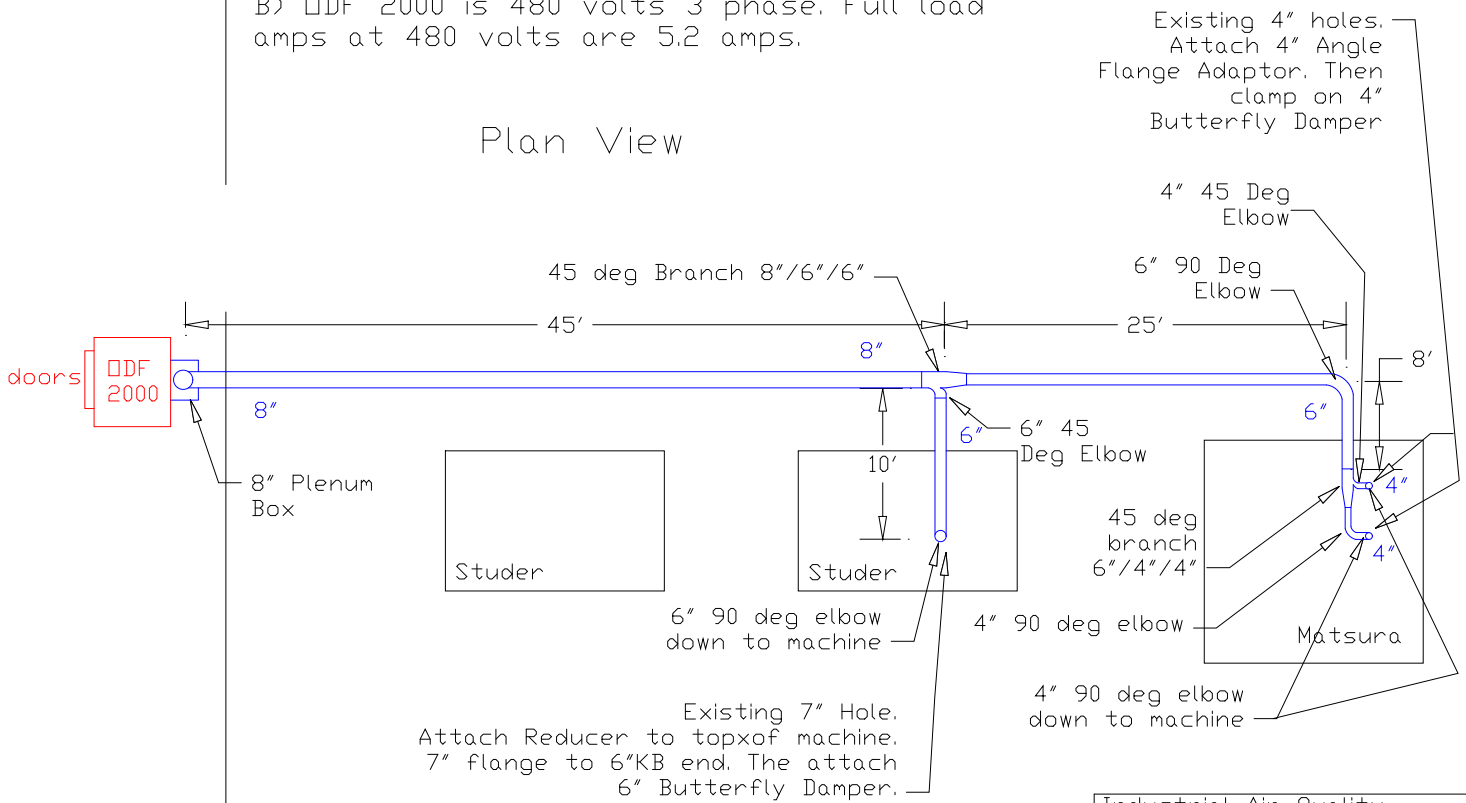


# Ductwork Layout for ODF 2000

## Notes:

- A) Run ductwork about 12' off of floor.
- B) ODF 2000 is 480 volts 3 phase. Full load amps at 480 volts are 5.2 amps.

## Plan View



Industrial Air Quality	
102 AG DRIVE	
Youngsville, NC 27596	
P# 919-562-7181	F# 919-562-7182
Project: Winchester Tool	
Drawing: Ductwork Layout	
Date: 7/7/08	Drawn by: RAV
Revision Date:	