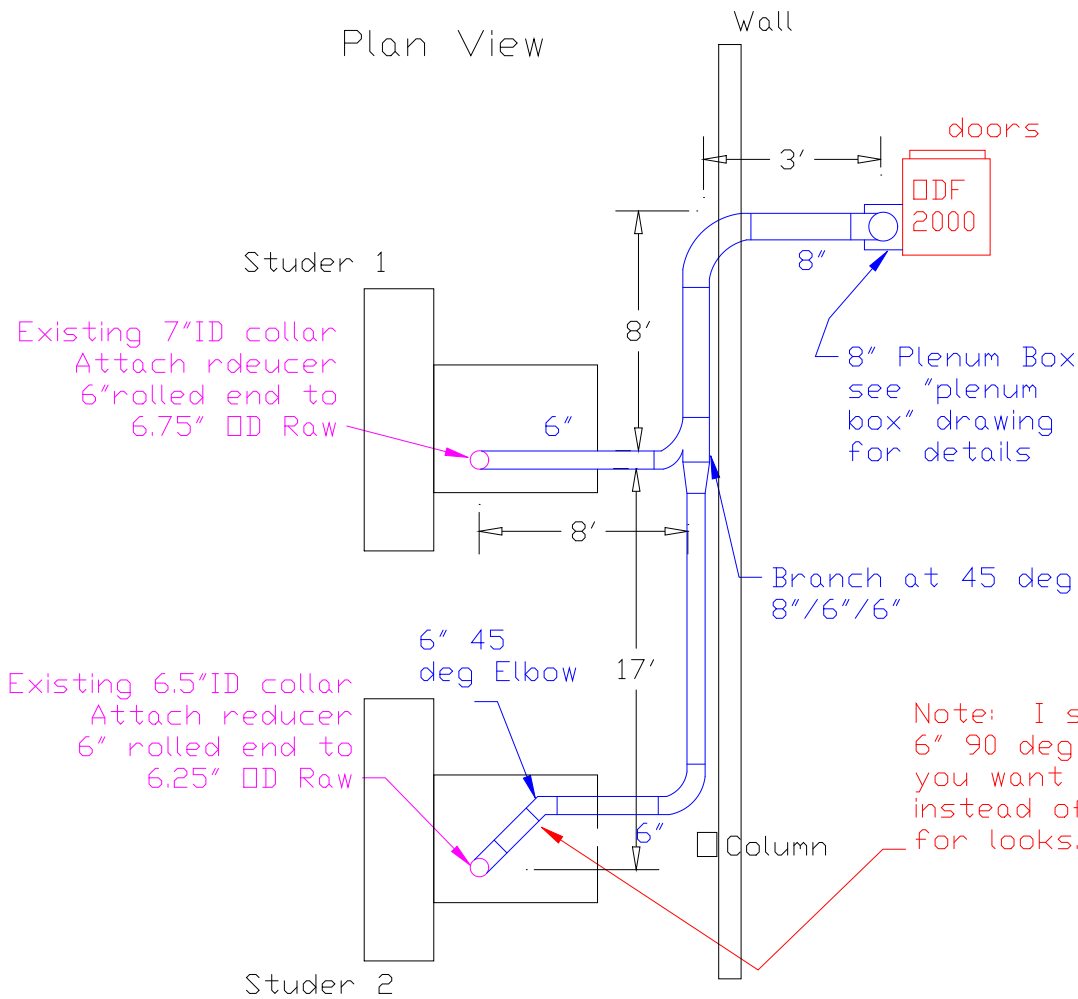


Ductwork Layout for Studers

Plan View



Notes:

- A) Ductwork about 8' off of floor.
- B) Each drop will have a 6" butterfly damper to adjust airflow.
- C) PVC P-Trap will be sent with Absolent. This is for the drain line.
- D) Hang ductwork with Grippler hangers that are shipped with the Absolent.
- E) Electrical: Motor is 3.5Hp. At 460 volts the full load amps are 5.0

Note: I sent an extra 6" 90 deg elbow in case you want to 90 over instead of the 45 deg for looks.

Industrial Air Quality		IAQ
102 AG DRIVE Youngsville, NC 27596		
P# 919-562-7181 F# 919-562-7182		
Project: Winchester Tool		
Drawing: Ductwork layout		
Date: 2/18/09		Drawn by: RAV
Sheet No:		