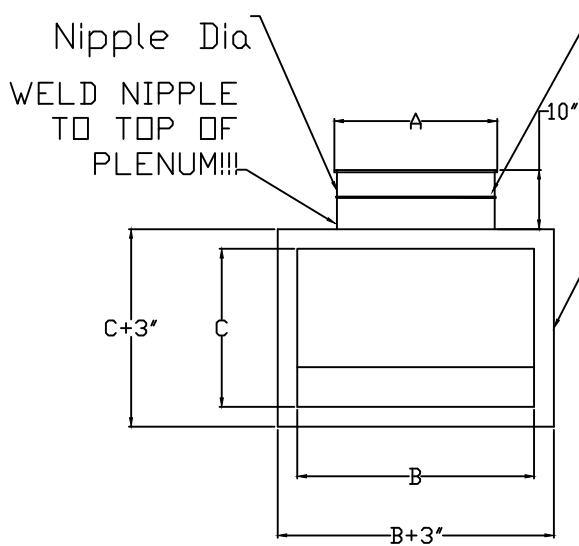


Plenum Box End View

Project:

NOTES:

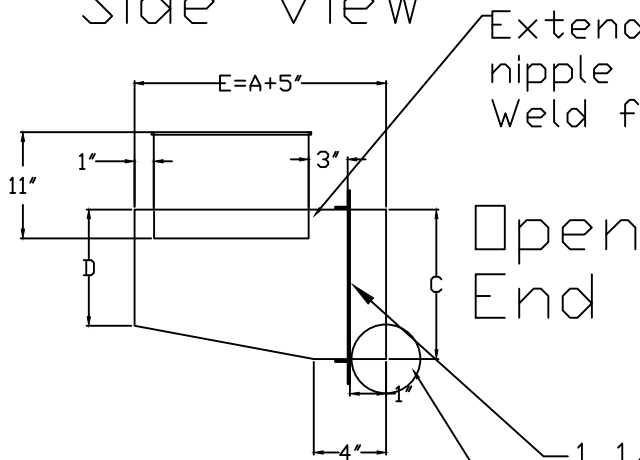
- A) MATERIAL: 18 GA. GALV.
- B) ALL SEAMS WELDED
- C) Use standard bolt hole pattern with 7/16" Holes
- D) For QF Collar, make it the diameter of a nipple



Rubber O-Ring
1 1/2" Angle Iron Flange with standard bolt pattern. WELD angle iron to box. POINT flange towards Nipple.

QF SIZE	A	B	C	D	E
6"	6"	8"	6"	4"	11"
8"	8"	12"	8"	5"	13"
9"	9"	12"	8"	5"	14"
10"	10"	12"	8"	5"	15"
12"	12"	16"	14"	5"	17"
14"	14"	17"	14"	10"	19"
16"	16"	18"	14"	10"	21"
18"	18"	21"	14"	10"	23"
20"	20"	26"	14"	10"	25"
22"	22"	30"	14"	10"	27"

Side View

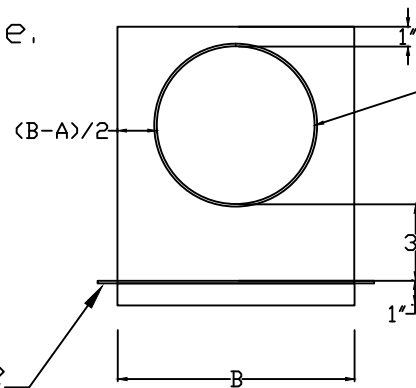


Extend raw end of nipple 1" into box. Weld from inside.

Open End

1 1/2" Flange
NOTE: WELD ALL CORNERS ON BOTTOM INSIDE THE PLENUM!!!!

Top View



QF FITTING
A dimension
Make Nipple Dia.

Avani Environmental Intl.
95 Cypress Drive
Youngsville, NC 27596
P# 919-570-2862 F# 919-570-2863

Avani

Project: Absolent Plenum Box
Drawing: 6"-22" Plenum Box
Date: 7/24/12 | Drawn by: WWB
Sheet No: 1 | Rev.: 3