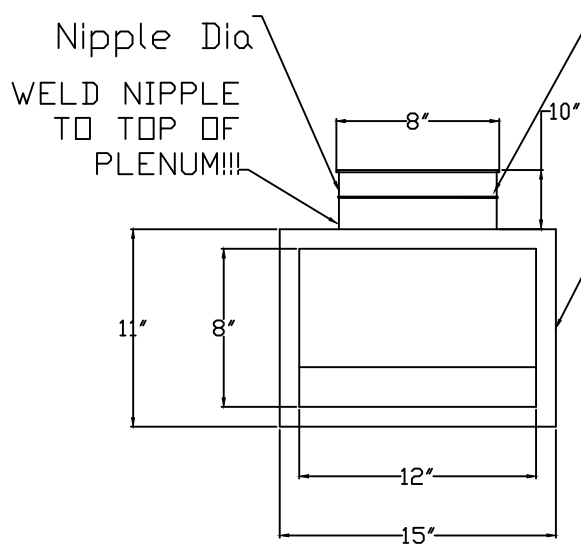


Plenum Box End View

Project:

NOTES:

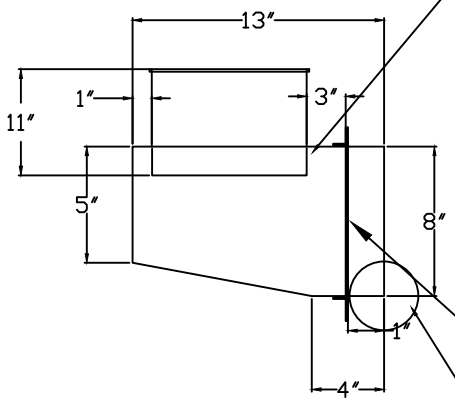
- A) MATERIAL: 18 GA. GALV.
- B) ALL SEAMS WELDED
- C) Use standard bolt hole pattern with 7/16" Holes
- D) For QF Collar, make it the diameter of a nipple



Rubber O-Ring
1 1/2" Angle Iron Flange with standard bolt pattern. WELD angle iron to box. POINT flange towards Nipple.

QF SIZE	A	B	C	D	E
8"	8"	12"	8"	5"	13"

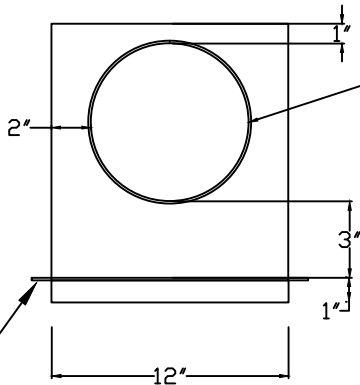
Side View



Extend raw end of nipple 1" into box. Weld from inside.

Open End

Top View



QF FITTING
A dimension
Make Nipple Dia.

1 1/2" Flange
NOTE: WELD ALL CORNERS ON BOTTOM INSIDE THE PLENUM!!!!

Avani Environmental Intl. 95 Cypress Drive Youngsville, NC 27596 P# 919-570-2862 F# 919-570-2863	Avani
Project: Absolent Plenum Box	
Drawing: 6"-22" Plenum Box	
Date: 7/24/12 Drawn by: WWB	
Sheet No: 1	Rev.: 3