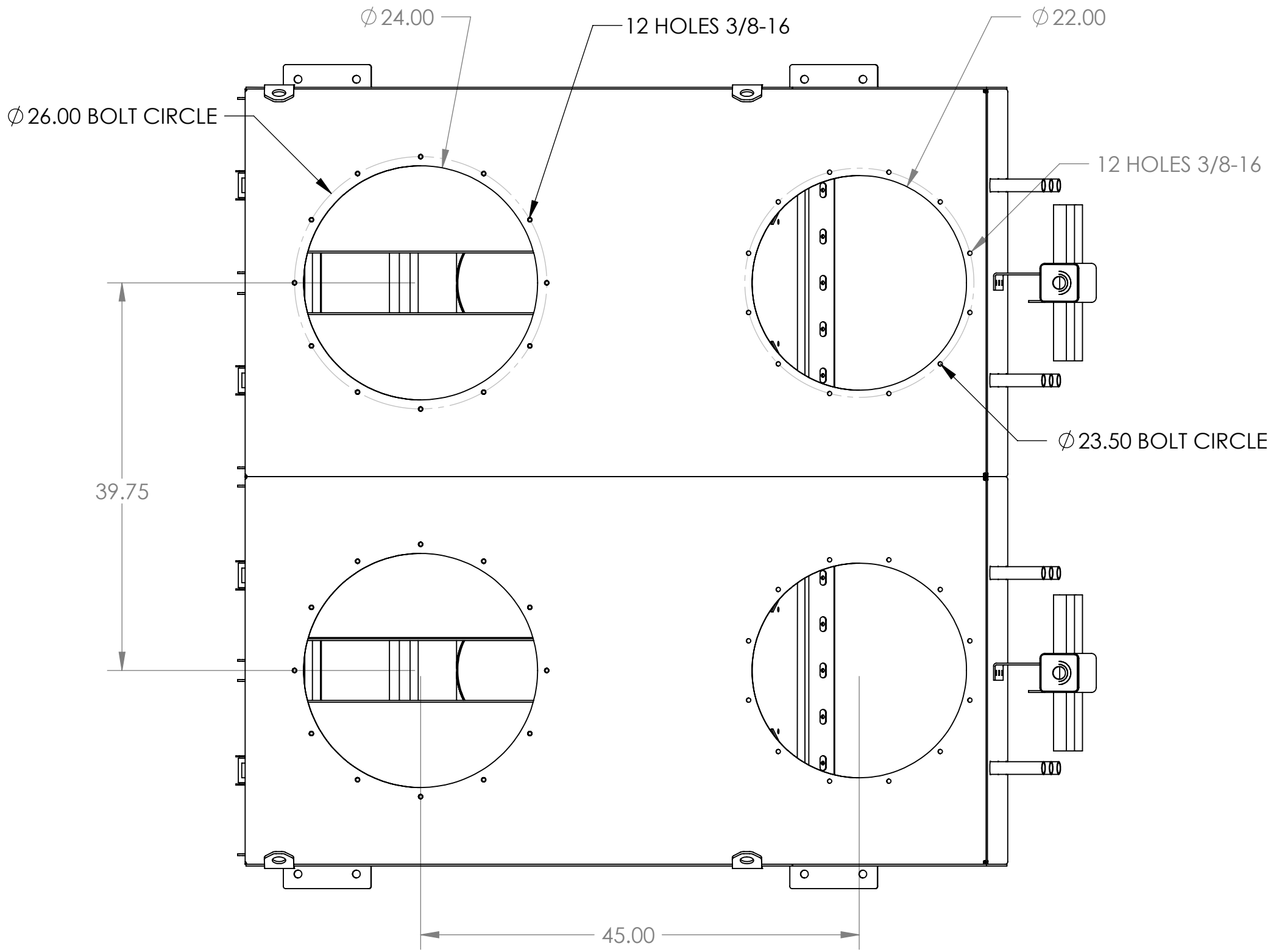


Bottom View

ACT 4-32 SPECS

- NUMBER OF FILTERS... ...32
- SQ FT PER FILTER... ...254 SQ FT
- FILTER DIMENSIONS... ...13.8" X 26"
- NUMBER OF VALVES... ...16
- RECOMMENDED AIR PRESSURE... ...90-100 PSI
- APPROXIMATE AIR CONSUMPTION... ...24 CFM WHEN PULSING 2 DIAPHRAGMS EVERY 10 SECONDS CONTINUOUSLY

		CUT / SAW / SHEAR	X	TOLERANCES UNLESS SPECIFIED	<small>THE INFORMATION IN THIS DOCUMENT IS THE SOLE PROPERTY OF ACT MANUFACTURING, LLC. ANY REPRODUCTION IN PART OR WHOLE WITHOUT THE WRITTEN PERMISSION OF ACT MANUFACTURING, LLC IS PROHIBITED.</small> A.C.T. 13310 Ind Pk Blvd Plymouth, MN 55441 (800)-422-1316
		PUNCH / DRILL	X	ANGLES +/- .1°	
		FORM	X	DECIMAL .00 ± .03 .000 ± .010	
		WELD	X	FRACTIONS +/- 1/16	
		PAINT	X	WELDED PART LOC. < 6" = +/- 1/16 > 6" = +/- 1/8	
XX-XX-XX	X	X	ISSUE	A	ALL DIMENSIONS IN INCHES UNLESS OTHERWISE SPECIFIED
DATE	BY	ECO#	DESCRIPTION	REV	SCALE 1:6
					TITLE X
					MATERIAL SEE BOM
					SCALE 1:6
					SHEET 1 OF 1
					DRAWING NUMBER C4-32 ASSY



VIEW TOP INLET